

84000H Series

HIGH PRESSURE

 84000H Pag. 5.5	 84040H Pag. 5.5	 84041H Pag. 5.5	 84111H Pag. 5.5	 84130H Pag. 5.6	 84131H Pag. 5.6	 84202H Pag. 5.16	 84211H Pag. 5.6	 84230H Pag. 5.7
 84320H Pag. 5.7	 84610H Pag. 5.7	 84620H Pag. 5.7	 84700H Pag. 5.8	 84707H Pag. 5.8	 84708H Pag. 5.8			

84000 Series

LOW PRESSURE

 84000 Pag. 5.10	 84040 Pag. 5.10	 84041 Pag. 5.10	 84111 Pag. 5.10	 84130 Pag. 5.11	 84131 Pag. 5.11	 84202 Pag. 5.11	 84211 Pag. 5.11	 84230 Pag. 5.12
 84320 Pag. 5.12	 84610 Pag. 5.12	 84620 Pag. 5.12	 84700 Pag. 5.13	 88707 Pag. 5.13	 88708 Pag. 5.13	 WB033 Pag. 5.13		

Click here to view the **84000H Series** on our Website



Click here to view the **84000 Series** on our Website



PUSH-TO-CONNECT FITTINGS FOR MISTING SYSTEMS



84000H - 84000 Series

MIST
FIT



TECHNICAL CHARACTERISTICS



Standard Reference

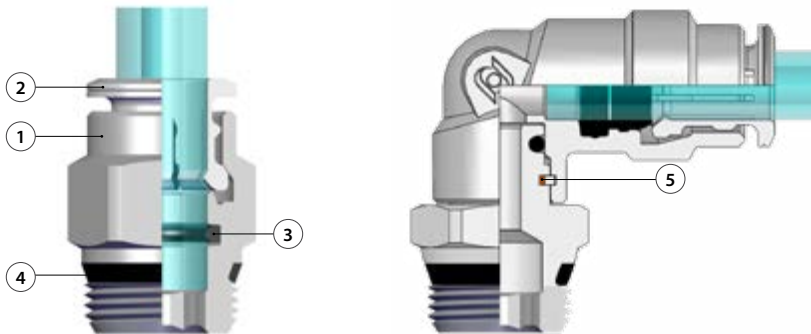
1907/2006
REACH ✓

2011/65/CE
RoHS ✓

PED
2014/68/UE

ISO
14743:2020

SILICON
FREE



Component Parts and Materials

- 1 Nickel-plated brass Body
- 2 Nickel-plated brass Clamping washer
- 3 NBR O-Ring
- 4 Nbr Thread packing
- 5 Seeger



Pressure Rating

0 bar ~ 85 bar
0 MPa ~ 8.5 MPa

HIGH PRESSURE



Temperatures Rating

NBR 0° F ~ 176° F
 0° C ~ 80° C



Media

- Water



Tubing Compatibility

PLASTIC TUBES:
PA12, Metallic tubes.
* Copper or Steel tube, must be grooved.



One fitting... Endless possibilities

NPT
NPTF
TAPERED

ISO 7
BSPP
PARALLELL

ISO 7
BSPT - PT
TAPERED

ISO 228
BSP - PF
PARALLELL



INCLINED



CONCAVE



CONVEX

Torque Specifications

Recommended Torque		
Thread Size	Min.	Max.
1/8	5 Nm	7 Nm
1/4	5 Nm	7 Nm
3/8	5 Nm	7 Nm
1/2	5 Nm	7 Nm

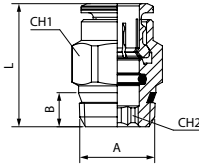
All SWIFFIT fittings have been equipped with threads and an NBR thread seal that will universally connect to all thread types. Our SWIFFIT universal fittings also work on non-flat surfaces without compromising its air-tight seal.

84000H

STRAIGHT MALE ADAPTOR



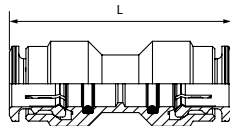
Code	Usa Ref	Tube	A	B	L	CH1	CH2	Pack.
84000 HO 006	84000H-1/4-1/4	1/4	1/4	.276 (7)	1003(25,5)	.551 (14)	-	25
84000 HO 007	84000H-1/4-3/8	1/4	3/8	.295 (7,5)	1023 (26)	.669 (17)	-	25
84000 HO 012	84000H-3/8-1/4	3/8	1/4	.276 (7)	1181 (30)	.709 (18)	.276 (7)	25
84000 HO 013	84000H-3/8-3/8	3/8	3/8	.295 (7,5)	1063 (27)	.709 (18)	.315 (8)	25



84040H

STRAIGHT CONNECTOR

Code	Usa Ref	Tube	L	Pack.
84040 HO 003	84040H-1/4	1/4	1.712 (43,5)	25
84040 HO 005	84040H-3/8	3/8	1.850 (47)	25

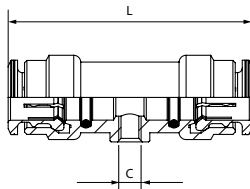


84041H

STRAIGHT CONECTOR FOR NOZZLE ADAPTER

UNC

Code	Usa Ref	Tube	C	L	Pack.
84041 HO 001	84041H-1/4	1/4	10-24 UNC	1.929 (49)	25
84041 HO 002	84041H-3/8	3/8	10-24 UNC	2049 (52)	25
84042 HO 002	84042H-3/8	3/8	12-24 UNC	2049 (52)	25

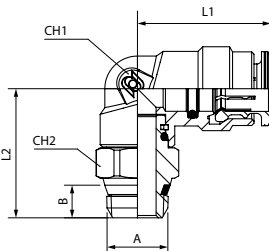


84111H

ORIENTING ELBOW MALE ADAPTOR



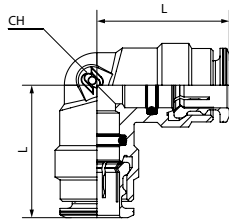
Code	Usa Ref	Tube	A	B	L1	L2	CH1	CH2	Pack.
84111 HO 006	84111H-1/4-1/4	1/4	1/4	.276 (7)	1.063 (27)	.926 (23,5)	.433 (11)	.591 (15)	25
84111 HO 007	84111H-1/4-3/8	1/4	3/8	.295 (7,5)	1.063 (27)	.945 (24)	.433 (11)	.669 (17)	25
84111 HO 012	84111H-3/8-1/4	3/8	1/4	.276 (7)	1.103 (28)	1.123 (28,5)	.551 (14)	.630 (16)	25
84111 HO 013	84111H-3/8-3/8	3/8	3/8	.295 (7,5)	1.103 (28)	1.103 (28)	.551 (14)	.669 (17)	25



84130H

LBOW CONNECTOR

Code	Usa Ref	Tube	L	CH	Pack.
84130 H0 003	84130H-1/4	1/4	1.023 (26)	.433 (11)	25
84130 H0 005	84130H-3/8	3/8	1.103 (28)	.551 (14)	25

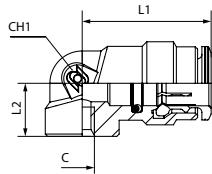


84131H

FITTING END OF LINE FOR NOZZLE ADAPTER

UNC

Code	Usa Ref	Tube	C	L1	L2	CH	Pack.
84131 H0 001	84131H-1/4	1/4	10-24 UNC	.984 (25)	.394 (10)	.433 (11)	25
84131 H0 002	84131H-3/8	3/8	10-24 UNC	1.103 (28)	.511 (13)	.551 (14)	25

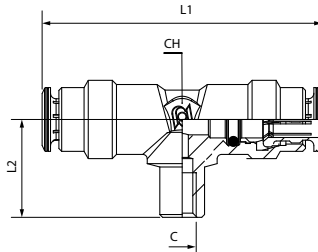


84202H

PLUG-IN EQUAL RUN TEE

UNC

Code	Usa Ref	Tube	C	L1	L2	CH	Pack.
84202 H0 001	84202H-1/4	1/4	10-24 UNC	2.049 (52)	.689 (17,5)	.433 (11)	25

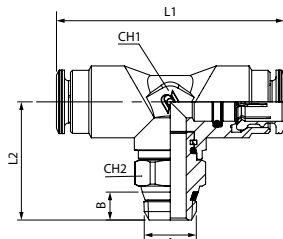


84211H

ORIENTING TEE MALE ADAPTOR
CENTRE LEG



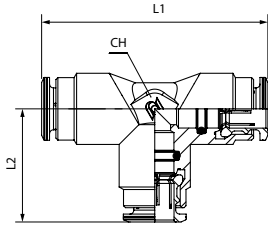
Code	Usa Ref	Tube	A	B	L1	L2	CH1	CH2	Pack.
84211 H0 006	84211H-1/4-1/4	1/4	1/4	.276 (7)	2.049 (52)	1.003(25.5)	.433 (11)	.591 (15)	25
84211 H0 014	84211H-1/4-3/8	1/4	3/8	.295 (7,5)	2.049 (52)	.946 (24)	.433 (11)	.669 (17)	25
84211 H0 007	84211H-3/8-1/4	3/8	1/4	.276 (7)	2.244 (57)	1.123 (28.5)	.630 (16)	.630 (16)	25
84211 H0 008	84211H-3/8-3/8	3/8	3/8	.295 (7,5)	2.244 (57)	1.103 (28)	.630 (16)	.669 (17)	25



84230H

TEE CONNECTOR

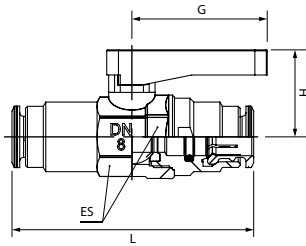
Code	Usa Ref	Tube	L1	L2	CH	Pack.
84230 H0 003	84230H-1/4	1/4	2.049 (52)	1.023(26)	.433 (11)	25
84230 H0 005	84230H-3/8	3/8	2.244 (57)	1.103 (28)	.630 (16)	25



84320H

PUSH-IN CONNECTIONS VALVE

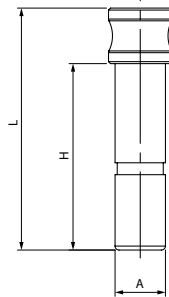
Code	Usa Ref	Tube	L	H	G	ES	Pack.
84320 H0 001	84320H-1/4	1/4	2.303 (58,5)	.878 (22,5)	1.378 (35)	.709 (18) - .748 (19)	25
84320 H0 003	84320H-3/8	3/8	2.461 (62,5)	.878 (22,5)	1.378 (35)	.709 (18) - .748 (19)	25



84610H

PLUG

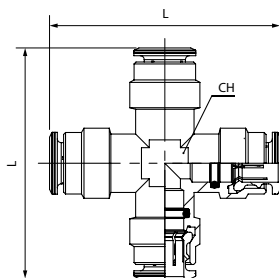
Code	Usa Ref	A	L	H	Pack.
84610 H0 01 DS NB	84610H-1/4	1/4	1.201 (30,5)	.925 (23,5)	25
84610 00 01 04 NB	84610H-3/8	3/8	1.181 (30)	.867 (22)	25



84620H

CROSS CONNECTOR

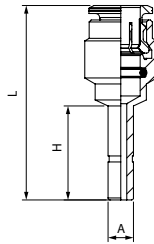
Code	Usa Ref	A	L	CH	Pack.
84620 H0 001	84620H-1/4	1/4	2.049 (52)	.512 (13)	25
84620 H0 002	84620H-3/8	3/8	2.244 (57)	.669 (17)	25



84700H

REDUCER

Code	Usa Ref	Tube	A	L	H	Pack.
84700 H0 003	84700H-1/4-3/8	1/4	3/8	1.634 (41,5)	.866 (22)	25
84700 H0 007	84700H-3/8-1/4	3/8	1/4	1.909 (48,5)	.925 (23,5)	25

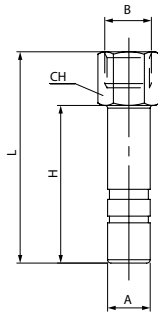


84707H

REDUCER FOR NOZZLE ADAPTER

UNC

Code	Usa Ref	A	B	L	H	CH	Pack.
84707 H0 01 IB NB	84707H-1/4	1/4	10-24 UNC	1.240 (31,5)	.925 (23,5)	.315 (8)	25

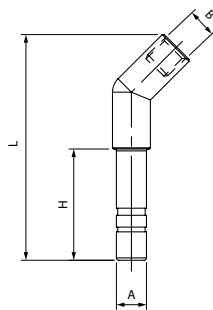


84708H

REDUCER 45° FOR NOZZLE ADAPTER

UNC

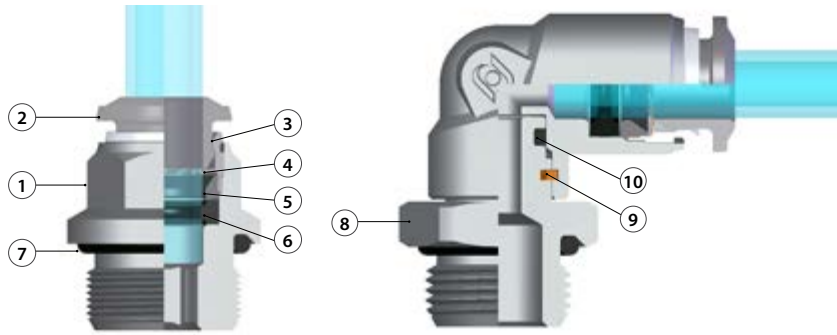
Code	Usa Ref	A	B	L	H	Pack.
84708 H0 01 03 NB	84708H-1/4	1/4	10-24 UNC	1.870 (47,5)	.925 (23,5)	25





MIST FIT - LOW PRESSURE INCH TUBE

PUSH-TO-CONNECT FITTINGS FOR MISTING SYSTEMS

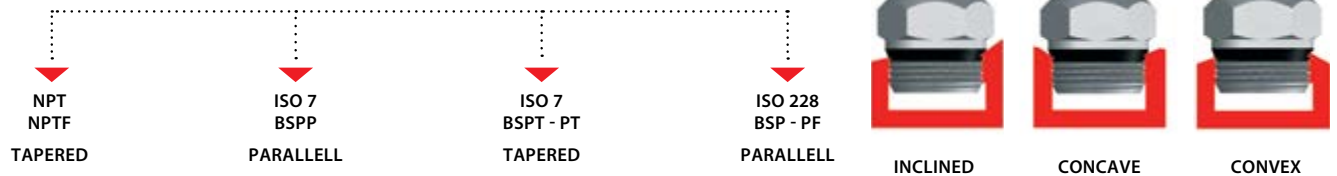


Component Parts and Materials

- 1 Nickel-plated brass Body
- 2 Nickel-plated brass Collet
- 3 Nickel-plated brass Capsule
- 4 Steel AISI 301 Clamping washer
- 5 Technopolymeric positioning ring
- 6 NBR Molded seal (if requested FKM - EPDM)
- 7 NBR Thread packing (if requested FKM - EPDM)
- 8 Base Threaded Nickel Plated Brass
- 9 Seeger
- 10 NBR seal (if requested FKM - EPDM)



One fitting... Endless possibilities



All SWIFFIT fittings have been equipped with threads and an NBR thread seal that will universally connect to all thread types. Our SWIFFIT universal fittings also work on non-flat surfaces without compromising its air-tight seal.



Pressure Rating

0 bar ~ 35 bar
0 MPa ~ 3.5 MPa

LOW PRESSURE



Temperatures Rating

NBR 0° F ~ 176° F
 0° C ~ 80° C



Media

• Water



Tubing Compatibility

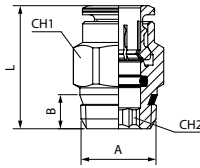
PLASTIC TUBES:
PA12, Metallic tubes.
* Copper or Steel tube, must be grooved.

84000

STRAIGHT MALE ADAPTOR



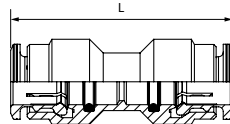
Code	Usa Ref	Tube	A	B	L	CH1	CH2	Pack.
84000 H0 006	84000-04-04	1/4	1/4	.276 (7)	.826 (21)	.551 (14)	.157 (4)	25
84000 H0 007	84000-04-06	1/4	3/8	.295 (7,5)	.925 (23,5)	.669 (17)	.157 (4)	25
84000 H0 012	84000-06-04	3/8	1/4	.276 (7)	1.102 (28)	.669 (17)	.276 (7)	25
84000 H0 013	84000-06-06	3/8	3/8	.295 (7,5)	1.023 (26)	.669 (17)	.276 (7)	25



84040

STRAIGHT CONNECTOR

Code	Usa Ref	Tube	L	Pack.
84040 H0 003	84040-04	1/4	1.358 (34,5)	25
84040 H0 005	84040-06	3/8	1.653 (42)	25

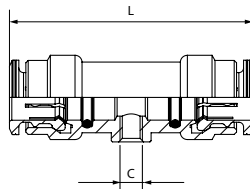


84041

STRAIGHT CONECTOR FOR NOZZLE ADAPTER

UNC

Code	Usa Ref	Tube	C	L	Pack.
84041 H0 001	84041-04	1/4	10-24 UNC	1.555 (39,5)	25
84041 H0 002	84041-06	3/8	10-24 UNC	1.909 (48,5)	25
84042 H0 002	84042-06	3/8	12-24 UNC	1.909 (48,5)	25

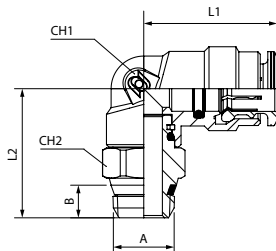


84111

ORIENTING ELBOW MALE ADAPTOR



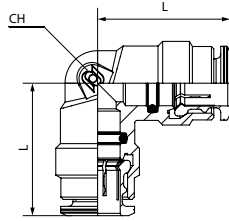
Code	Usa Ref	Tube	A	B	L1	L2	CH1	CH2	Pack.
84111 H0 006	84111-04-04	1/4	1/4	.276 (7)	.846 (21,5)	.906 (23)	.433 (11)	.591 (15)	25
84111 H0 007	84111-04-06	1/4	3/8	.295 (7,5)	.846 (21,5)	.925 (23,5)	.433 (11)	.669 (17)	25
84111 H0 012	84111-06-04	3/8	1/4	.276 (7)	1.043 (26,5)	1.123 (28,5)	.551 (14)	.630 (16)	25
84111 H0 013	84111-06-06	3/8	3/8	.295 (7,5)	1.043 (26,5)	1.103 (28)	.551 (14)	.669 (17)	25



84130

LBOW CONNECTOR

Code	Usa Ref	Tube	L	CH	Pack.
84130 H0 003	84130-04	1/4	.846 (21,5)	.433 (11)	25
84130 H0 005	84130-06	3/8	1.043 (26,5)	.630 (16)	25

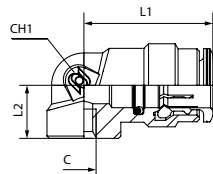


84131

FITTING END OF LINE FOR NOZZLE ADAPTER

UNC

Code	Usa Ref	Tube	C	L1	L2	CH	Pack.
84131 H0 001	84131-04	1/4	10-24 UNC	.827 (21)	.394 (10)	.433 (11)	25
84131 H0 002	84131-06	3/8	10-24 UNC	1.024 (26)	.511 (13)	.551 (14)	25

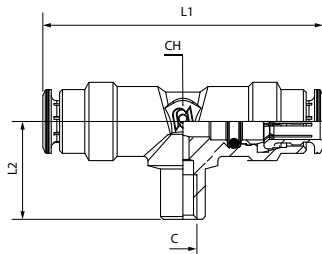


84202

PLUG-IN EQUAL RUN TEE

UNC

Code	Usa Ref	Tube	C	L1	L2	CH	Pack.
84202 H0 001	84202-04	1/4	10-24 UNC	1.674 (42,5)	.689 (17,5)	.433 (11)	25

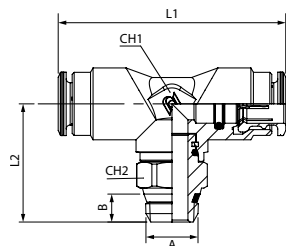


84211

ORIENTING TEE MALE ADAPTOR
CENTRE LEG

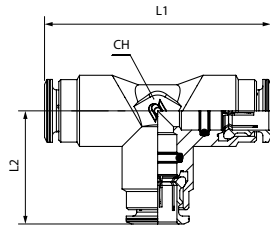


Code	Usa Ref	Tube	A	B	L1	L2	CH1	CH2	Pack.
84211 H0 006	84211-04-04	1/4	1/4	.276 (7)	1.674 (42,5)	.906 (23)	.433 (11)	.591 (15)	25
84211 H0 014	84211-04-06	1/4	3/8	.295 (7,5)	1.674 (42,5)	.926 (23,5)	.433 (11)	.669 (17)	25
84211 H0 007	84211-06-04	3/8	1/4	.276 (7)	2.106 (53,5)	1.123 (28,5)	.551 (14)	.630 (16)	25
84211 H0 008	84211-06-06	3/8	3/8	.295 (7,5)	2.106 (53,5)	1.103 (28)	.551 (14)	.669 (17)	25



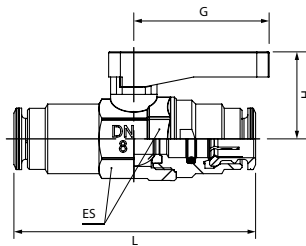
84230
TEE CONNECTOR

Code	Usa Ref	Tube	L1	L2	CH	Pack.
84230 H0 003	84230-04	1/4	1.674 (42,5)	.846 (21,5)	.433 (11)	25
84230 H0 005	84230-06	3/8	2.086 (53)	.1043 (26,5)	.551 (14)	25



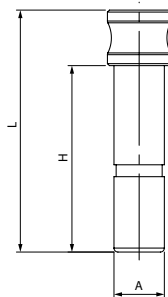
84320
PUSH-IN CONNECTIONS VALVE

Code	Usa Ref	Tube	L	H	G	ES	Pack.
84320 H0 001	84320-04	1/4	1.850 (47)	.846 (21,5)	1.378 (35)	.709 (18) - .748 (19)	25
84320 H0 003	84320-06	3/8	2.303 (58,5)	.878 (22,5)	1.378 (35)	.709 (18) - .748 (19)	25



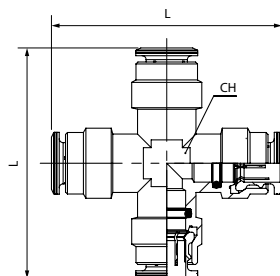
84610
PLUG

Code	Usa Ref	A	L	H	Pack.
84610 H0 01 DS NB	84610-04	1/4	.964 (24,5)	.689 (17,5)	25
84610 00 01 04 NB	84610-06	3/8	1.181 (30)	.867 (22)	25



84620
CROSS CONNECTOR

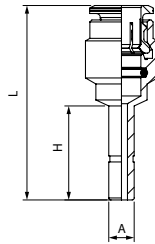
Code	Usa Ref	A	L	CH	Pack.
84620 H0 001	84620-04	1/4	2.027 (51,5)	.433 (11)	25
84620 H0 002	84620-06	3/8	2.460 (62,5)	.669 (17)	25



84700

REDUCER

Code	Usa Ref	Tube	A	L	H	Pack.
84700 H0 003	84700-04-06	1/4	3/8	1.594 (40,5)	.669 (17,5)	25
84700 H0 007	84700-06-04	3/8	1/4	1.409 (35,8)	.827 (21)	25

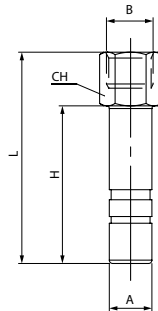


84707

REDUCER FOR NOZZLE ADAPTER

UNC

Code	Usa Ref	A	B	L	H	CH	Pack.
84707 H0 01 IB NB	88707-04	1/4	10-24 UNC	1.024 (26)	0.708 (18)	.315 (8)	25

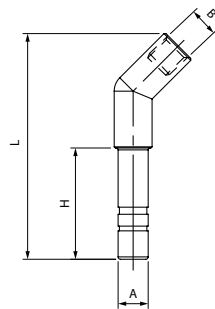


84708

REDUCER 45° FOR NOZZLE ADAPTER

UNC

Code	Usa Ref	A	B	L	H	Pack.
84708 H0 01 03 NB	88708-04	1/4	10-24 UNC	1.653 (42)	0.708 (18)	25



WB033

INLINE FILTER

Code	Usa Ref	A	L	CH1	CH2	Pack.
WB033 VX 001	WB033-VX001	1/4	2,559 (65)	.748 (19)	.511(13)	10
WB033 VX 002	WB033-VX002	3/8	2,775 (70,5)	.748 (19)	.669 (17)	10

