

Actuators

Cartridge Cylinders

Ø 6-16 mm



CA - CAF Series

Pg. 15.3

Mini Cylinders ISO 6432

Ø 8-25 mm



Mini Series

Pg. 15.5

Mini Stainless Steel ISO 6432

Ø 16-25 mm



Mini Stainless Steel Series

Pg. 15.14

Limited Space

Ø 32-63 mm



A95 Series

Pg. 15.17

Compact Cylinders

Ø 12-100 mm



Q Series

Pg. 15.24

ISO 15552 Cylinders

Ø 32-125 mm



L Series

Pg. 15.37

ISO 6431 Cylinders

Ø 160-320 mm



E Series

Pg. 15.44

ISO 15552 Cylinders

Ø 32-125 mm



X Series

Pg. 15.46

Stainless Steel ISO 15552

Ø 32-125 mm



V Series

Pg. 15.51

Twin Rod Cylinders

Ø 32-100 mm



NHA Series

Pg. 15.54

Compact Cylinders

Ø 20-100 mm



W Series

Pg. 15.58

Cylinder Accessories

ISO 6431 - ISO 15552 - ISO 21287



Pg. 15.66

Guided Units

ISO 15552 - Ø 12-25 mm
ISO 6431 VDMA - Ø 32-100 mm



Pg. 15.76

Rodless Cylinders

Ø 16-63 mm



R Series

Pg. 15.85

Rotary Actuators

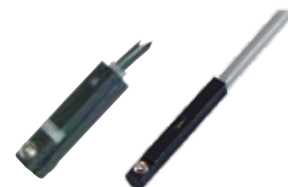
Ø 32-100 mm



XR Series

Pg. 15.96

Magnetic Position Sensing Switches



Sensor

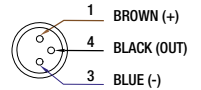
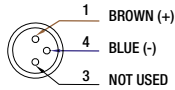
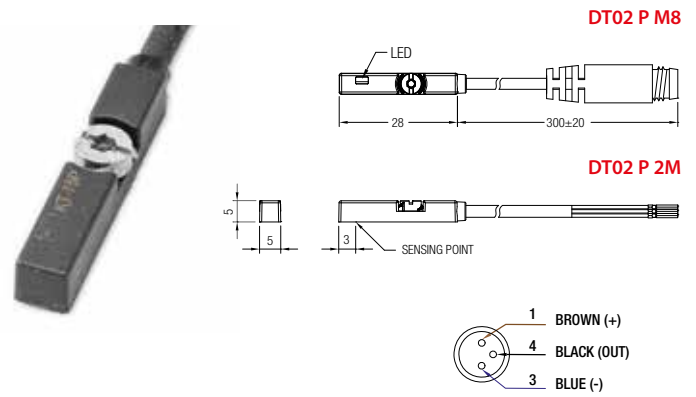
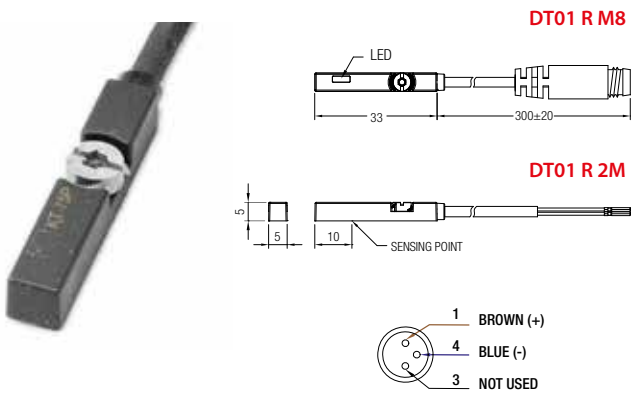
Pg. 15.99

PNEUMATIC ACTUATORS



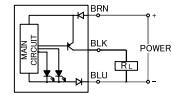
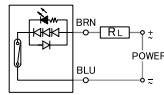
Actuators

SERIES DT - MAGNETIC SWITCHES



Part No. DT01 R 2M	Part No. DT01 R M8
-------------------------------------	-------------------------------------

Part No. DT02 P 2M	Part No. DT02 P M8
-------------------------------------	-------------------------------------

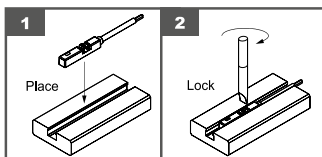


Connection	∅ 2.8 - 2 WIRE PU - 2MT	∅ 2.8 - 2 WIRE PU - M8 CONNECTOR
Switching logic	SPST. Normally open	
Sensor type	Reed Switch	
Voltage Range	5÷240V DC/AC	
Switching current	100 mA max	
Contact rating	10W max	
Max voltage drop	0.3V	
Output status indicator	RED LED	
Operating frequency	200 Hz	
Working temperature	-10 / + 70 °C 14 / 158 °F	
Shock	30 G	
Vibration	9 G	
Protection degree	IEC 60529 IP67	
Protection Circuit	NO	

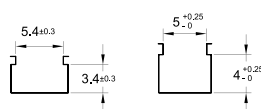
Connection	∅ 2.8 - 3 WIRE PU - 2MT	∅ 2.8 - 3 WIRE PU - M8 CONNECTOR
Switching logic	Solid State Output. Normally open	
Sensor type	PNP Current Sourcing	
Voltage Range	10÷28V DC	
Switching current	80 mA max	
Contact rating	2W max	
Max voltage drop	10mA @ 24 V DC max	
Max voltage drop	1.5V max	
Leakage current	0.05mA max	
Output status indicator	RED/GREEN LED	
Operating frequency	1000 Hz	
Magnetic requirement	50 Gauss	
Working temperature	-10 / + 60 °C 14 / 140 °F	
Shock	50 G	
Vibration	9 G	
Protection degree	IEC 60529 IP67	



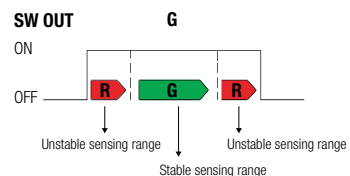
Quick Installation



Common cylinder slot dimensions



Dual color LED allows more precise positioning.



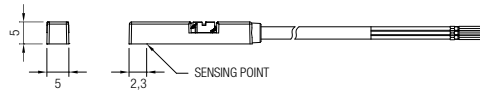
SERIES DTEX - ATEX SWITCHES



CE ATEX APPROVAL
(Baseefa14ATEX0118)



II 3GDEx ic IIB T4 Gc (-10°C ≤ Ta ≤ +70°C)
Ex ic IIB T135 °C Dc (-10°C ≤ Ta ≤ +70°C)

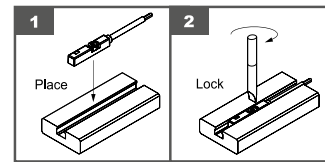


DTEX03 P 2M

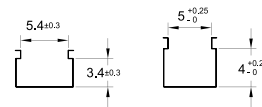
	Part No. DTEX03 P 2M
Connection	∅ 2.8 - 3WIRE PU - 2 MT
Switching logic	Solid State Output. Normally open
Sensor type	PNP Current Sourcing
Voltage Range	10÷28 V DC
Switching current	200 mA max
Contact rating	5.5 W max
Max voltage drop	10 mA @ 24 V DC max
Max voltage drop	1.5 V @ 50mA max
Leakage current	0.05 mA max
Output status indicator	RED YELLOW
Operating frequency	1000 Hz
Magnetic requirement	50 Gauss
Working temperature	-10 / + 70 °C 14 / 158 °F
Shock	50 G
Vibration	9 G
Protection degree	IEC 60529 IP67



Quick Installation

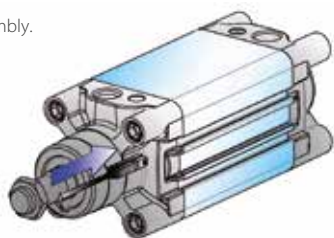


Common cylinder slot dimensions

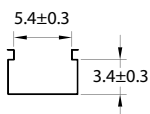


SERIES DSL - MAGNETIC SWITCHES

DSL sensor lengthwise assembly.



Common cylinder slot dimensions



	Part No. DSL1 C 225	Part No. DSL1 M8	Part No. DSL4 N 225	Part No. DSL4 M8
Image				
Circuit diagram				
Connection	2 WIRE PVC - 2.5 MT	2 WIRE PVC - 0.3 MT - M8 CONNECTOR	3 WIRE PVC - 2.5 MT	3 WIRE PVC - 0.3 MT - M8 CONNECTOR
Switching logic	N.O.			
Sensor type	REED	REED	PNP - HALL	PNP - HALL
Voltage Range	3-130 V AC/DC	3-130 V AC/DC	10-30 V DC	10-30 V DC
Max current at 25°C (77 °F)	50 mA	50 mA	200 mA	200 mA
Max power/Resistive load	10 W	10 W	6 W	6 W
Max voltage drop	3.2 V	3.2 V	0.8 V	0.8 V
Output status indicator	YELLOW LED			
Response time	0.5 ms max	0.5 ms max	0.2 ms max	0.2 ms max
Decay time	0.1 ms max			
Electric life (resistive load)	4x10 ⁷			
Working temperature	-20 / + 70 °C -4 / 158 °F			
Protection degree	IP 68			
Short circuit	NO			
Type of mounting to the cylinder	Longitudinal only			

BRACKET FOR DSL TO USE WITH MINI CYLINDERS ISO 6432 AND A95 SERIES CYLINDERS

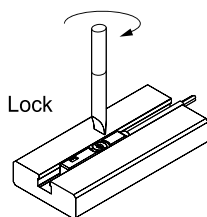
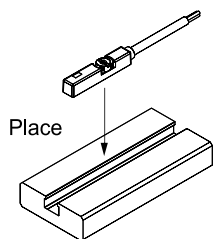
Part No.	Ø	F = Ø	A	B
MFX 008	8	9.4 mm	14	8
MFX 010	10	11.3 mm	14	8
MFX 012	12	13.3 mm	14	8
MFX 016	16	17.3 mm	14	8
MFX 020	20	21.3 mm	14	8
MFX 025	25	26.3 mm	14	8

Part No.	Ø	F = Ø	A	B
AFX 032	32	33.5 mm	14	8
AFX 040	40	41.5 mm	14	8
AFX 050	50	52 mm	14	8
AFX 063	63	65 mm	14	8

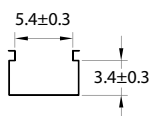


SERIES DSH - MAGNETIC SWITCHES

DSH sensors with axial or long inserting slot.



Common cylinder slot dimensions



Part No.
DSH2 R 2F 20

Part No.
DSH2 R 2F M8

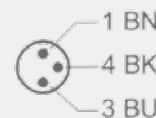
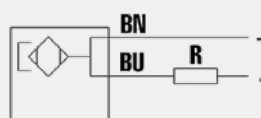
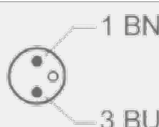
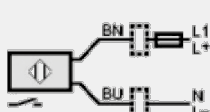
Part No.
DSH4 H 3F 20



Part No.
DSH4 H 3F M8



Circuit diagram



Connection

2 WIRE
PVC - 2 MT

2 WIRE
PVC - 0.3 MT - M8 CONNECTOR

3 WIRE
PUR - 2 MT

3 WIRE
PUR - 0.3 MT - M8 CONNECTOR

Switching logic

N.O.

Sensor type

REED

REED

PNP - HALL

PNP - HALL

Voltage Range

5-120 V AC/DC

5-120 V AC/DC

10-30 V DC

10-30 V DC

Max current at 25°C (77 °F)

100 mA

Max power/Resistive load

10 W

10 W

-

-

Max voltage drop

< 5 V

< 5 V

< 2.5 V

< 2.5 V

Output status indicator

YELLOW LED

Response time

0.5 ms max

0.5 ms max

-

-

Decay time

0.1 ms max

0.1 ms max

< 30 ms

< 30 ms

Electric life (resistive load)

10⁷

10⁷

INFINITE

INFINITE

Working temperature

-20 / + 70 °C
-4 / 158 °F

-25 / + 85 °C
-13 / 185 °F

Protection degree

IP 67

Short circuit

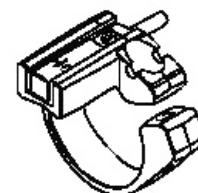
NO

Type of mounting to the cylinder

Axial and longitudinal

BRACKET FOR DSH TO USE WITH MINI CYLINDERS ISO 6432

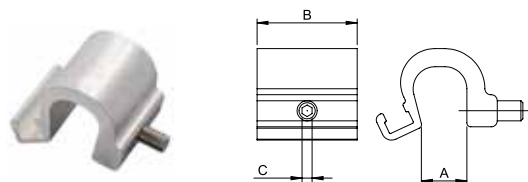
Part No.	Ø	F = Ø
MFH 012	12	13.3 mm
MFH 016	16	17.3 mm
MFH 020	20	21.3 mm
MFH 025	25	26.3 mm



ACCESSORIES

EXF

BRACKET FOR DSL - DSH - DT SENSORS



Code	Ø	A	B	C
EXF032	32 - 40	7.5	25	2
EXF050	50 - 63	11.3	25	2.5
EXF080	80 - 100 - 125	15.3	25	2.5
EXF160	160 - 200 - 250	20	25	2.5

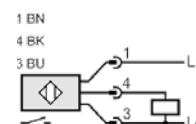
PX

STRAIGHT THREE WIRES EXTENSION MAGNETIC FOR SWITCHES



Code	Lunghezza - Length - Länge Longueur - Longitud - Comprimento
PX 2000 PUR	2 MT 2
PX 5000 PUR	5 MT 2.5

Schema circuito
Circuit diagram
Schaltplan
Schéma
Esquema Circuito
Schema circuito



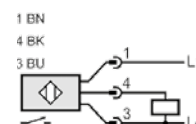
PX

"L" THREE WIRES EXTENSION MAGNETIC FOR SWITCHES



Code	Lunghezza - Length - Länge Longueur - Longitud - Comprimento
PX 20001 PUR	2 MT 2
PX 50001 PUR	5 MT 2.5

Schema circuito
Circuit diagram
Schaltplan
Schéma
Esquema Circuito
Schema circuito



DC

SENSOR DC ADAPTER



DC 00 001



DC 10 001

Directive 2014/34/UE (ATEX)

The Pneumatic Cylinders: Cartridge, Mini Cylinders ISO 6432, Stainless steel Mini Cylinders, A95, Compact (Q - W), Short Stroke (B), Series X ISO 15552, Series E ISO 6431, Twin-piston rod Series NHA ISO 15552 and Series P ISO 15552 show the following features:




II 2 GD c T6 -20°C<Tamb<80°C

II 2 GD: Device for surface installations (II = do not use device in mining) with presence of gas, vapors of powders of category 2 (equipment with high safety factor since it excludes danger of explosion, even in case of damage; it can be used in areas with possible explosive environments).

c: Devices are constructively safe

T6 – 10°C<Tamb<60°C: Surface temperature class and additional marking for T usage environment.



	<p>TECHNICKÁ INŠPEKCIA, a.s.</p> <p>CEOC INTERNATIONAL</p>				
<p>SLOVENSKÁ REPUBLIKA</p>					
<p>ACKNOWLEDGEMENT OF RECEIPT</p> <p>no. 564/5/2015</p>					
<p>Technická inšpekcia, a. s., Trnavská cesta 56, 821 01 Bratislava Notified body: 1354,</p>					
<p>confirms, that Technical File Documentation</p> <p>prepared by</p> <p>Aignep S.p.A. Via Don G. Bazzoli 34, 25070 Blone (BS), Italy</p>					
<p>has been received and stored according to the Directive 94/9/EC (ATEX) on equipment and protective systems intended for use in potentially explosive atmospheres</p>					
<p>Scope of Ex Equipment:</p>					
<p>Cylinders Types: Cartridge Cylinders, Mini Cylinders ISO 6432, Mini Cylinders inox, A95 Cylinders, Compact Cylinders, Short Stroke Cylinders, Cylinders X ISO 15552, Cylinders E ISO 6431, Twin Piston Rod Cylinders NHA ISO 15552, Cylinders P ISO 15552</p>					
<p>Classification:  II 2 GD c T6 - 20°C<Tamb<80°C</p>					
<p>Technical File Documentation</p>					
<table border="1" style="width: 100%; border-collapse: collapse;"> <thead> <tr> <th style="width: 50%;">Doc. no.</th> <th style="width: 50%;">Issue</th> </tr> </thead> <tbody> <tr> <td style="text-align: center;">Technical Book According to 94/9/EC</td> <td style="text-align: center;">10/3/15 Rev.0</td> </tr> </tbody> </table>	Doc. no.	Issue	Technical Book According to 94/9/EC	10/3/15 Rev.0	
Doc. no.	Issue				
Technical Book According to 94/9/EC	10/3/15 Rev.0				
<p>Technical documentation will be stored for 10 years until March 25th, 2025.</p>					
<p>Bratislava, March 25th, 2015</p>					
	<p>On behalf of Technická inšpekcia, a.s.</p> <p><i>[Signature]</i> Ing. Dušan Konický General Director</p>				
<p>271018 PODKA1-41</p>					

See Instructions and Certificate at:

WWW.AIGNEP.COM