

Valves

Solenoid Pilot Valves



01V

Pg. 14.4

Externally Piloted Solenoid Valves



01V - X1V

Pg. 14.10

Air Pilot Valves



01V

Pg. 14.24

Manual Valves



01V - X1V

Pg. 14.30

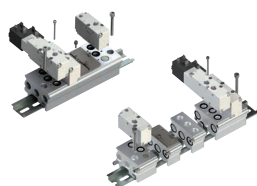
Mechanically Actuated Valves



01V

Pg. 14.40

Din Rail Mounted, Fixed Length and Modular Manifold Bases



01V

Pg. 14.43

Micro Valves



02V

Pg. 14.49

16 mm Valves



03V

Pg. 14.52

Micro Valves, Panel Mounted



04V

Pg. 14.56

Individual and Manifold Base Mounted Valves



05V

Pg. 14.59

Pedal Valves



06V

Pg. 14.67

Solenoid Valves



07V

Pg. 14.69

Miniature Solenoid Valves 10 mm



07V

Pg. 14.71

Miniature Solenoid Valves 15 mm



07V

Pg. 14.73

NAMUR Standard Valves



08V

Pg. 14.77

Valves ISO 5599 - Size 1



10V

Pg. 14.84

Valves ISO 5599 - Size 2



11V

Pg. 14.88

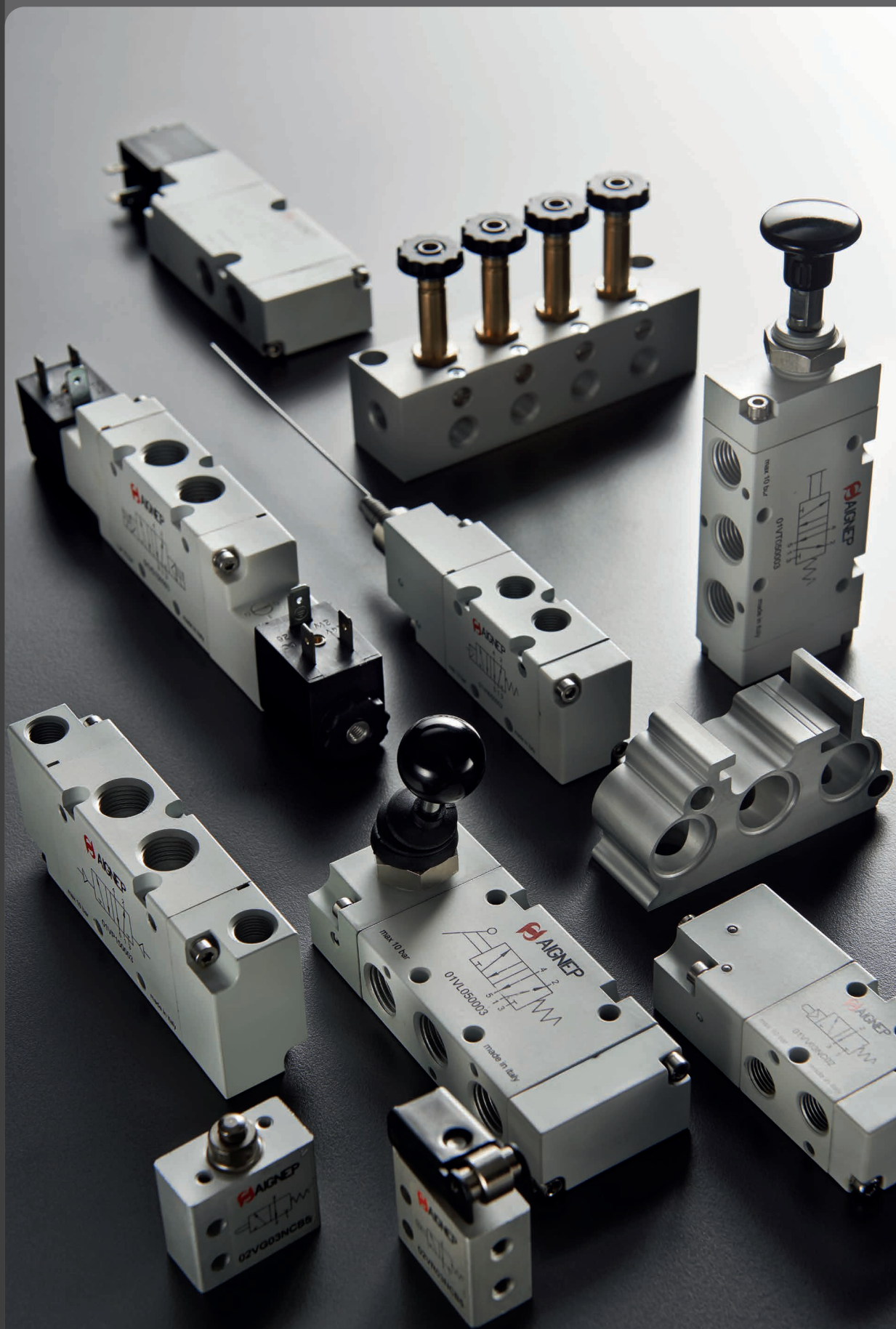
Solenoids and Connectors



Pg. 14.20 - Pg. 14.23

MANUAL, MECHANICAL, AIR PILOT AND SOLENOID PILOT VALVES

Valves



18 MM VDMA VALVES

05V



18 MM SOLENOID PILOT VALVES - VDMA



TECHNICAL CHARACTERISTICS



Reference Standard

1907/2006
REACH

2011/65/CE
RoHS

PED
2014/68/UE

ISO 15407-1
VDMA 24563 SIZE 02 (18 mm)



Component Parts and Materials

- Anodised aluminium body
- Nickel-plated spool
- NBR seals

	6 bar FLOW RATE with Δp 1 bar	550 NI/min
	OPERATING PRESSURE	Monostable
		2.5 ÷ 10 bar 36.5 ÷ 145 psi
	TEMPERATURE	Bistable
		1 ÷ 10 bar 14.5 ÷ 145 psi
	SOLENOID VOLTAGE	min
		-10 °C 14 °F
	MINIMUM POWER	max
		+60 °C 140 °F
	SOLENOID VOLTAGE	24V DC ÷ 24V AC
	MINIMUM POWER	2W - 3VA
	MANUAL CONTROL	MONOSTABLE
	Response time	Monostable
		TRA = 13 ms TRR = 26 ms
		Bistable
		TRA=TRR = 24 ms

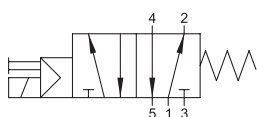
TRA = Response time with energised coil

TRR = Response time with deenergised coil

Series	Actuation	Reactuation	Function	Size
0 5 V	S	0	7	C C
	S = Solenoid	0 = Monostable spring return 1 = Bistable	3 = 3/2 5 = 5/2 7 = 5/3	CC = All Ports Blocked OC = Normally exhausted OO = Function not provided
				0 0
				00 = 24V DC 01 = 24V AC

5/2

SINGLE SOLENOID PILOT - SPRING RETURN

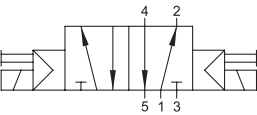


Part No.	Function	Solenoid	Pack.
05V S0 5 00 00	5/2	24V DC	1
05V S0 5 00 01	5/2	24V	1



5/2

DOUBLE SOLENOID PILOT

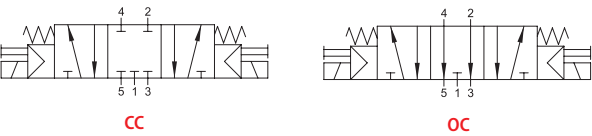


Part No.	Function	Solenoid	Pack.
05V S1 5 00 00	5/2	24V DC	1
05V S1 5 00 01	5/2	24V AC	1

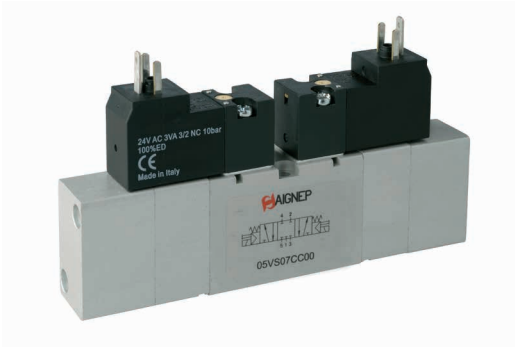


5/3

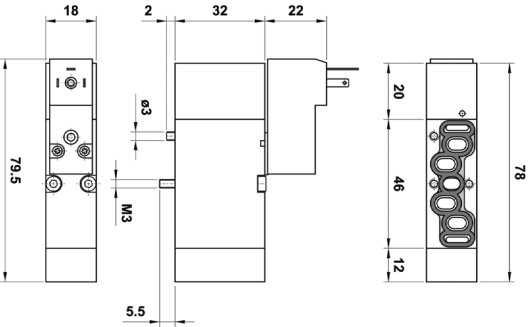
DOUBLE SOLENOID PILOT - SPRING CENTERED



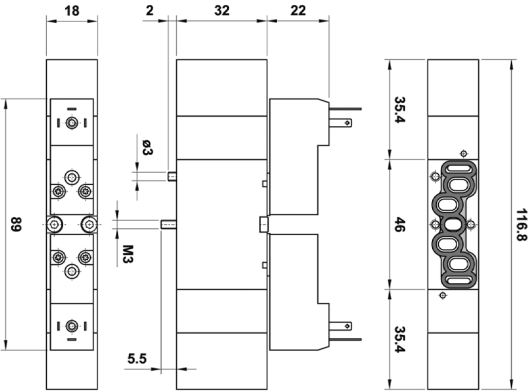
Part No.	Function	Solenoid	Pack.
05V S0 7 CC 00	5/3 CC	24V DC	1
05V S0 7 OC 00	5/3 OC	24V DC	1
05V S0 7 CC 01	5/3 CC	24V AC	1
05V S0 7 OC 01	5/3 OC	24V AC	1



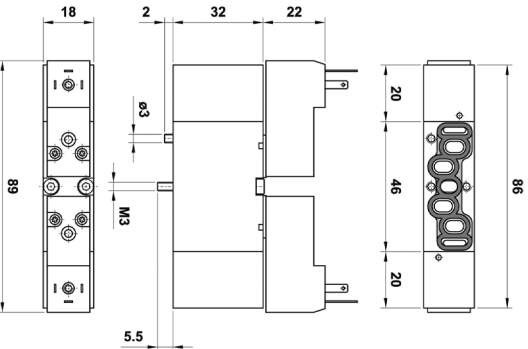
05V S0 5 00 00 05V S0 5 00 01



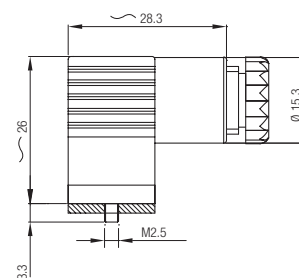
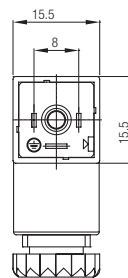
05V S0 7 CC 00 05V S0 7 OC 00 05V S0 7 CC 01 05V S0 7 OC 01



05V S1 5 00 00 05V S1 5 00 01



Connectors 15 mm



Part No.	Color	Characteristics	Pack.
CON11 000 01	■	STANDARD 2 PIN	1
CON12 024 00	□	LED + VDR 0 - 24V	1

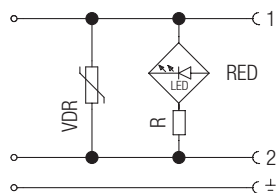
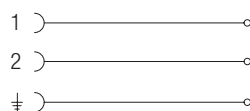
■ Black

□ Transparent

VDR: Fitted with varistors as surge protection device.



Wiring



CON11 000 01

CON12 024 00

DEGREE OF
PROTECTION

IP65 IEC
60529

CABLE DIAMETER

4 ÷ 6 mm

TERMINALS

DIN 4365 C

18 MM AIR PILOT VALVES



TECHNICAL CHARACTERISTICS



Reference Standard

1907/2006 REACH✓	2011/65/CE RoHS✓	PED 2014/68/UE	ISO 15407-1 VDMA 24563 SIZE 02 (18 mm)
---------------------	---------------------	-------------------	---



Component Parts and Materials

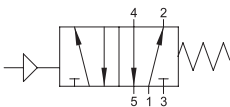
- Anodised aluminium body
- Nickel-plated spool
- NBR seals

	6 bar FLOW RATE with Δp 1 bar	550 NI/min
	PRESSURE DRIVE	0 ÷ 10 bar 0 ÷ 145 psi
	OPERATING PRESSURE	Monostable 2 ÷ 10 bar 29 ÷ 145 psi Bistable 1 ÷ 10 bar 14.5 ÷ 145 psi
	TEMPERATURE	min -10 °C 14 °F max +60 °C 140 °F
	RESPONSE TIME	Monostable TRA = 12 ms TRR = 24 ms Bistable TRA=TRR = 21 ms

TRA = Response time with energised coil TRR = Response time with deenergised coil

Series	Actuation	Reactuation	Function	Size
0 5 V	P	0	5	0 0
	P = Pneumatic	0 = Monostable spring return 1 = Bistable	5 = 5/2 7 = 5/3	CC = All Ports Blocked OC = Normally exhausted 00 = Function not provided

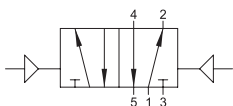
5/2
SINGLE AIR PILOT - SPRING RETURN



Part No.	Function	Pack.
05V P0 5 00 00	5/2	1

5/2

DOUBLE AIR PILOT

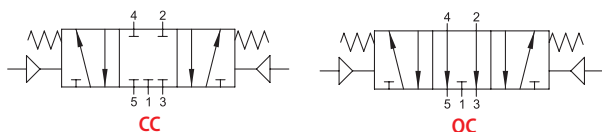


Part No.	Function	Pack.
05V P1 5 00 00	5/2	1



5/3

DOUBLE AIR PILOT - SPRING CENTERED

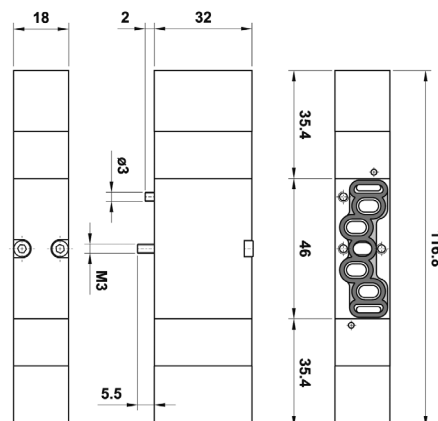
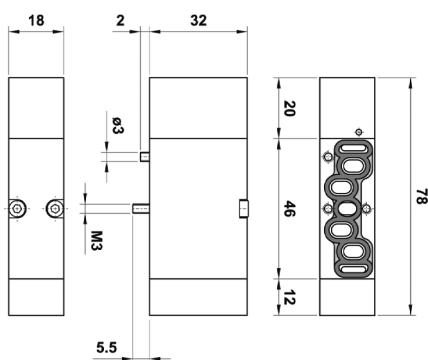


Part No.	Function	Pack.
05V P0 7 CC 00	5/3 CC	1
05V P0 7 OC 00	5/3 OC	1

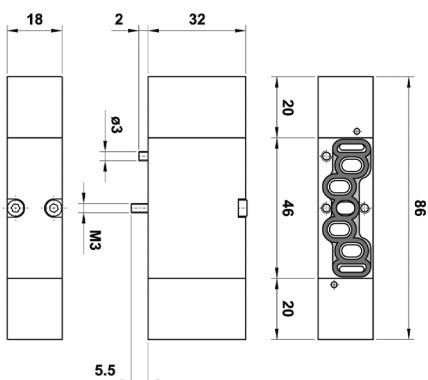


05V P0 5 00 00

05V P0 7 CC 00 05V P0 7 OC 00



05V P1 5 00 00



MODULAR BASES AND ACCESSORIES

All the bases are supplied with screws and seals to secure the correct assembly.

FRONT MANIFOLD END PLATE



Part No.	Pack.
05V B1 0 00 00	1

REAR MANIFOLD END PLATE



Part No.	Pack.
05V B2 0 00 00	1

MODULAR BASE



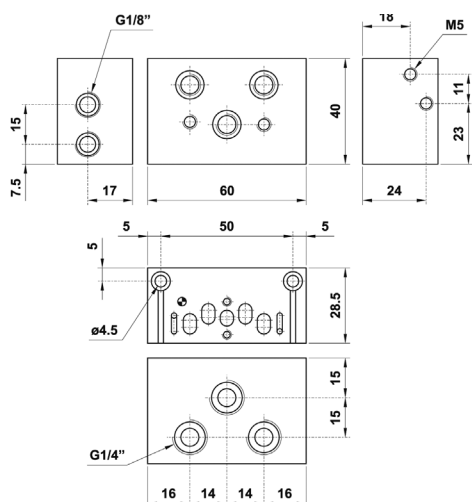
Part No.	Pack.
05V B3 0 00 00	1

INTERMEDIATE PRESSURE BASE

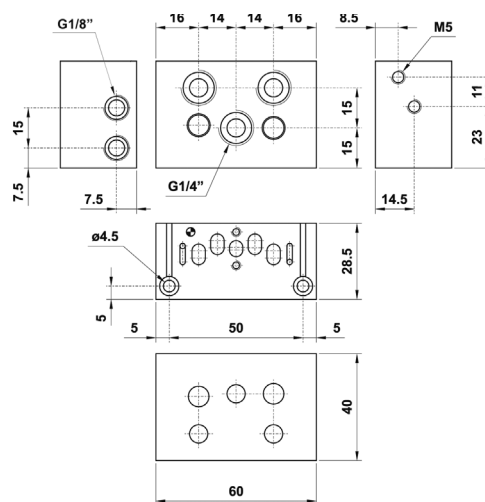


Part No.	Pack.
05V B4 0 00 00	1

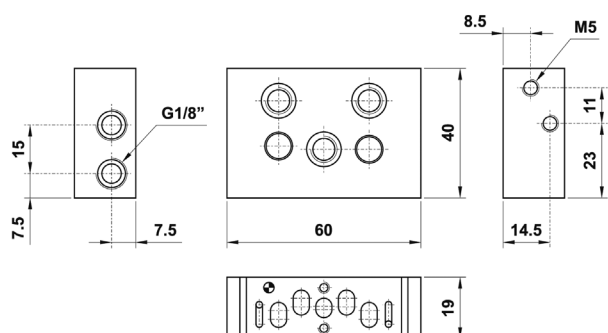
05V B1 0 00 00



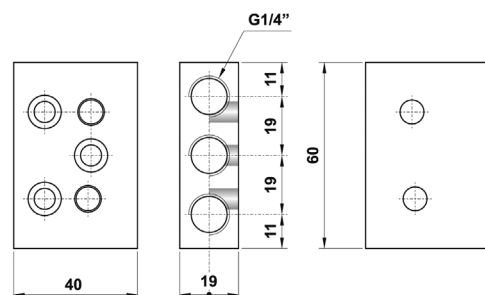
05V B2 0 00 00



05V B3 0 00 00



05V B4 0 00 00



INTERMEDIATE PLUG



Part No.	Pack.
05V B8 0 00 00	1

GASKET FOR INTERMEDIATE PLUG



The gasket is supplied with M8 dowel.

Part No.	Pack.
05V B7 0 00 00	1

BLANKING PLATE



Part No.	Pack.
05V B9 0 00 00	1

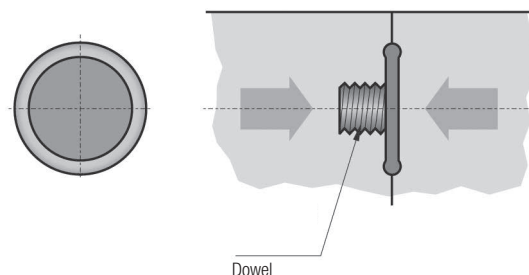
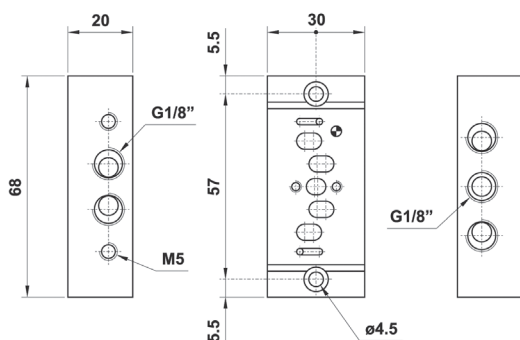
INDIVIDUAL BASE



Part No.	Pack.
05V B5 0 00 00	1

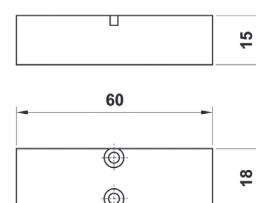
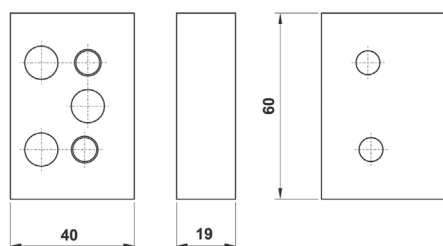
05V B5 0 00 00

05V B7 0 00 00



05V B8 0 00 00

05V B9 0 00 00



Example of assembling

