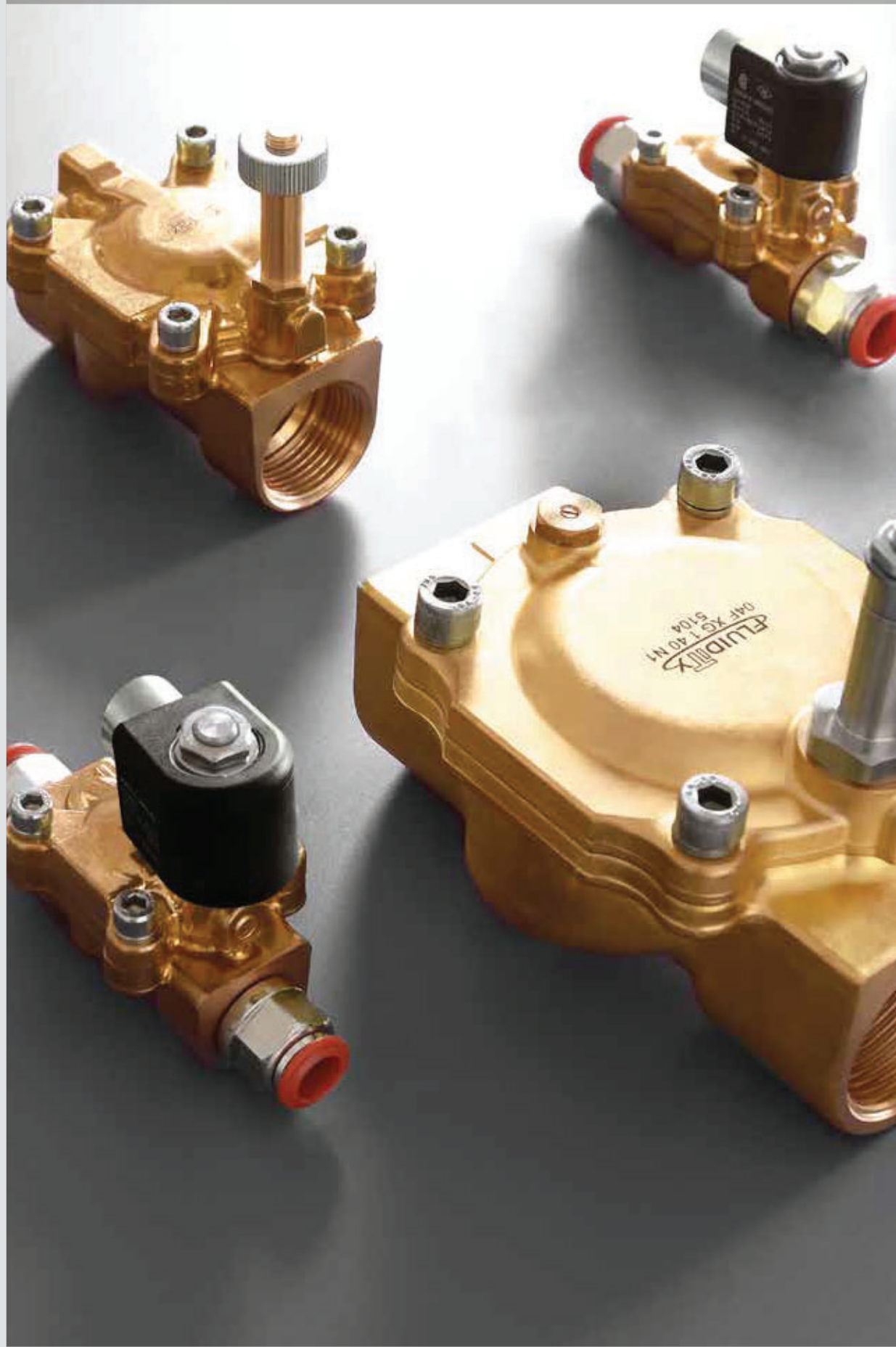


SERVO-ASSISTED SOLENOID VALVES WITH BRASS BODY



II 2 G/D Ex h



Series 04C

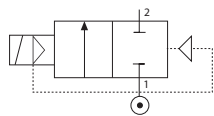
04C

Series 04C

SERVO-ASSISTED SOLENOID VALVES WITH BRASS BODY

2/2 NC

1/4" → 1"



Component Parts and Materials

- 1 Body: Brass CW617N
- 2 Seals: NBR - EPDM - FKM
- 3 Armature tube: Stainless steel
- 4 Fixed and mobile core: Stainless steel AISI 430FR
- 5 Springs: Stainless steel



General features - 04C

- Recommended horizontal mounting position
- Operator kit Ø 9 mm
- Coils: Series SOL03



Maximum allowable pressure

363 psi (25 bar)



Compatibility and materials table

Page 0.13 - 0.14



Room temperature with coil class H

+14°F	+140°F
-10°C	+60°C



Applications

- Water, Neutral liquids, Oils
- Water management, Water treatment
- Agriculture, Irrigation, Zootechnics
- Car washes, Washing systems
- Industrial processes, Refrigeration
- Air, Inert gases, Vacuum
- Oxygen, Steam



Ordering codes

Series	Port size	Functions	Orifice inch (mm)	Sealing materials	Version	Thread	Suitable coils	
0 4 C	0 3	1	1 0	N	H	N	N	A
	03 = 1/4"	1 = 2/2 NC	10 = 25/64 (10)	N = NBR	H = Standard	N = NPTF	N = N series - SOL03	A = 12V DC
	04 = 3/8"		14 = 35/64 (14)	E = EPDM	4 = Reinforced diaphragm (on request)			B = 24V DC
	05 = 1/2"		18 = 45/64 (18)	V = FKM	T = Speed regulator (on request)			6 = 120V AC
	07 = 3/4"		25 = 1 (25)		5 = Version 4 + T (on request)			4 = 240V AC
	09 = 1"							

Valves and coils are supplied separately.
Upon commercial agreements can be supplied assembled.

Code	Sealing materials	Port size	Ø Orifice	Viscosity	Cv (Kv)	Differential pressure (OPD)			Power		Coils	
						psi (bar)			DC	AC	Size	Series N - Page 17.7
						Min	Max DC	Max AC	W	VA	mm	
①	①	NPTF	inch (mm)	cSt	gpm (m³/h)							
04C 03 1 10 _ HN	N = NBR +14°F +194°F (-10°C +90°C)	1/4"	25/64 (10)	25	2.19 (1.88)	2 (0.15)	232 (16)	232 (16)	4.6	6.8	36	N - SOL03 *
04C 04 1 14 _ HN		3/8"	35/64 (14)	25	3.87 (3.32)	2 (0.15)	232 (16)	232 (16)				
04C 05 1 14 _ HN		1/2"	35/64 (14)	25	4.11 (3.53)	2 (0.15)	232 (16)	232 (16)				
04C 07 1 18 _ HN		3/4"	45/64 (18)	25	6.48 (5.56)	2 (0.15)	232 (16)	232 (16)				
04C 09 1 25 _ HN		1"	1 (25)	25	12.78 (10.97)	2 (0.15)	232 (16)	232 (16)				

① Select seal material

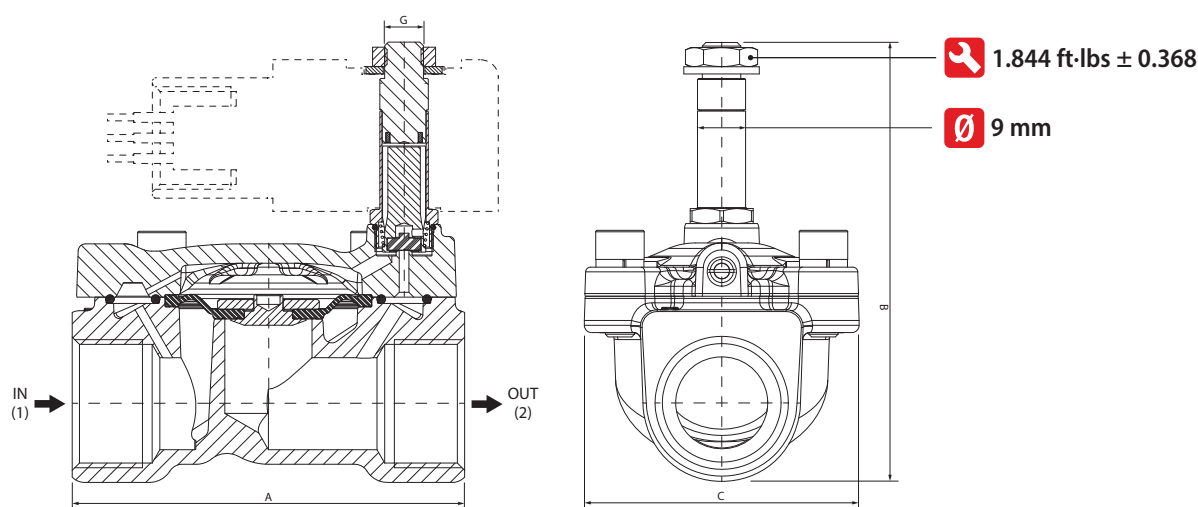
* **COIL SERIES N - SOL03**
Ex m II T4 and Division 1

Specifications in accordance to CSA certificate:

- Class I, Division 1, Groups A, B, C and D; Class II, Groups E, F and G; Class III;
- Class I, Division 2, Groups A, B, C, D.

Specifications in accordance to FM certificate:

- Explosionproof Class I, Division 1, Groups A, B, C, D, T4, Ta=60°C
- Encapsulation/explosionproof Class I, Zone 1, AEx m II T4, Ta=60°C
- Dust-ignitionproof for Class II/III, Division 1, Group E, F and G, T4, Ta=60°C
- Nonincendive Class I, Division 2, Groups A, B, C, D, T4, Ta=60°C
- Suitable for Class II, III, Division 2, Groups E, F, G, T4, Ta=60°C



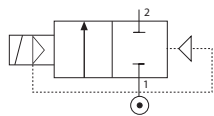
Size	A inch (mm)	B inch (mm)	C inch (mm)	G
1/4"	2.185 (55.5)	2.854 (72.5)	1.385 (35.2)	M8 x 0.75
3/8"	2.570 (65.3)	3.153 (80.1)	1.826 (46.4)	M8 x 0.75
1/2"	2.570 (65.3)	3.153 (80.1)	1.826 (46.4)	M8 x 0.75
3/4"	3.188 (81)	3.578 (90.9)	2.232 (56.7)	M8 x 0.75
1"	3.740 (95)	3.818 (97)	2.559 (65)	M8 x 0.75

Series 04C

SERVO-ASSISTED SOLENOID VALVES WITH BRASS BODY

2/2 NC

1"1/4 → 2"



Component Parts and Materials

- 1 Body: Brass CW617N
- 2 Seals: NBR - EPDM - FKM
- 3 Armature tube: Stainless steel
- 4 Fixed and mobile core: Stainless steel AISI 430FR
- 5 Springs: Stainless steel



General features - 04C

- Recommended horizontal mounting position
- Operator kit Ø 9 mm
- Coils: Series SOL03



Maximum allowable pressure

363 psi (25 bar)



Compatibility and materials table

Page 0.13 - 0.14



Room temperature with coil class H

+14°F	+140°F
-10°C	+60°C



Applications

- Water, Neutral liquids, Oils
- Water management, Water treatment
- Agriculture, Irrigation, Zootechnics
- Car washes, Washing systems
- Industrial processes, Refrigeration
- Air, Inert gases, Vacuum
- Oxygen, Steam



Ordering codes

Series	Port size	Functions	Orifice inch (mm)	Sealing materials	Version	Thread	Suitable coils	
0 4 C	X F	1	4 0	N	T	N	N	A
	XF = 1"1/4	1 = 2/2 NC	40 = 1" 9/16 (40)	N = NBR	T: Without manual override	N = NPTF	N = N series - SOL03	A = 12V DC
	XG = 1"1/2		50 = 1" 61/64 (50)	E = EPDM	1: With manual override (on request)			B = 24V DC
	XH = 2"			V = FKM				6 = 120V AC
								4 = 240V AC

Valves and coils are supplied separately.
Upon commercial agreements can be supplied assembled.

Code	Sealing materials	Port size	Ø Orifice	Viscosity	Cv (Kv)	Differential pressure (OPD)			Power		Coils	
①	①	NPTF	inch (mm)	cSt	gpm (m³/h)	psi (bar)			DC	AC	Size	Series
						Min	Max DC	Max AC	W	VA	mm	N - Page 17.7

With speed regulator												
04C XF 1 40 _ T N	N = NBR +14°F +194°F (-10°C +90°C)	1"1/4	1" 9/16 (40)	25	27.74 (24)	2.9 (0.20)	145 (10)	145 (10)	4.6	6.8	36	N - SOL03 *
04C XG 1 40 _ T N	V = FKM +14°F +284°F (-10°C +140°C)	1"1/2	1" 9/16 (40)	25	29.2 (25.3)	2.9 (0.20)	145 (10)	145 (10)				
04C XH 1 50 _ T N	E = EPDM +14°F +284°F (-10°C +140°C)	2"	1" 61/64 (50)	25	47.39 (41)	2.9 (0.20)	145 (10)	145 (10)				

① Select seal material

* COIL SERIES N - SOL03

Ex m II T4 and Division 1

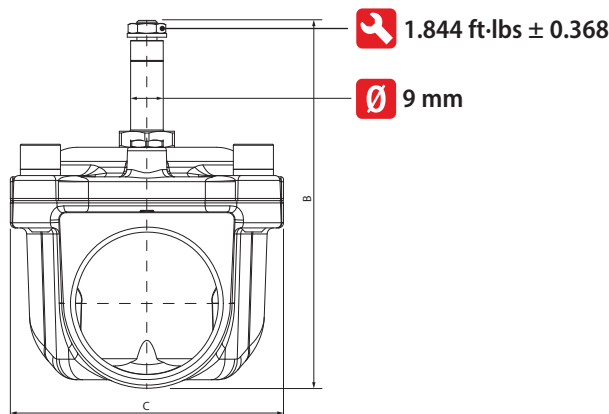
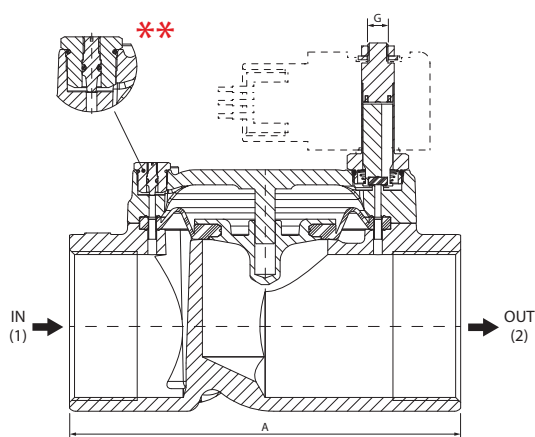
Specifications in accordance to CSA certificate:

- Class I, Division 1, Groups A, B, C and D; Class II, Groups E, F and G; Class III;
- Class I, Division 2, Groups A, B, C, D.

Specifications in accordance to FM certificate:

- Explosionproof Class I, Division 1, Groups A, B, C, D, T4, Ta=60°C
- Encapsulation/explosionproof Class I, Zone 1, AEx m II T4, Ta=60°C
- Dust-ignitionproof for Class II/III, Division 1, Group E, F and G, T4, Ta=60°C
- Nonincendive Class I, Division 2, Groups A, B, C, D, T4, Ta=60°C
- Suitable for Class II, III, Division 2, Groups E, F, G, T4, Ta=60°C

** Speed regulator



Size	A inch (mm)	B inch (mm)	C inch (mm)	G
1"1/4	5.51 (140)	5 (127)	3.85 (98)	M8 x 1
1"1/2	5.51 (140)	5 (127)	3.85 (98)	M8 x 1
2"	6.14 (156)	5.78 (147)	4.29 (109)	M8 x 1