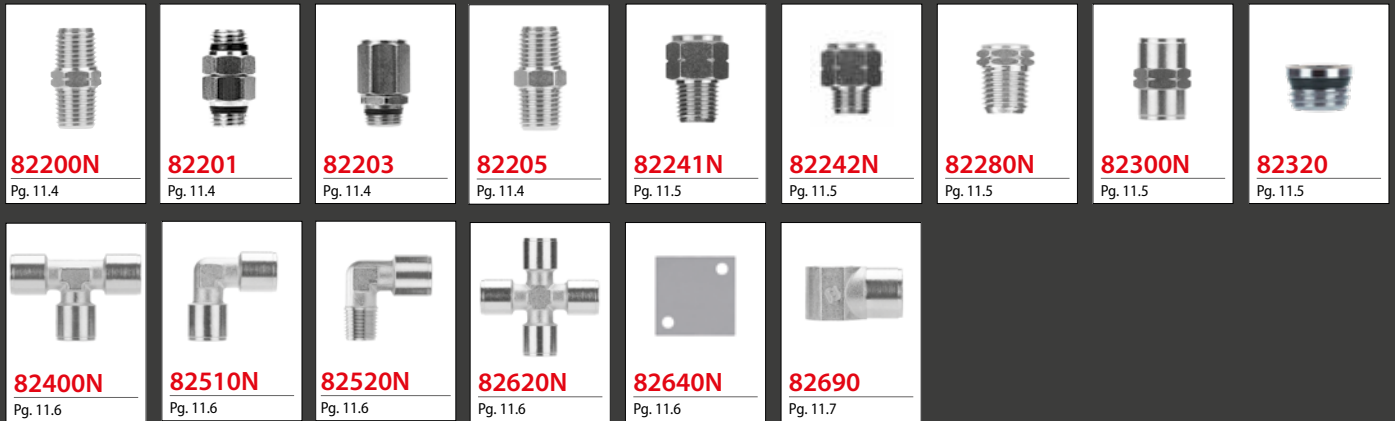
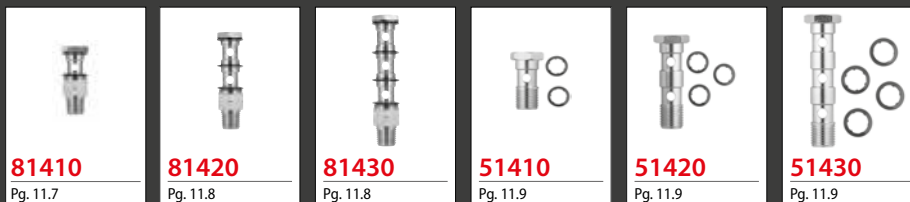


Adapters



NPTF Banjo Stem Assemblies



Tubing



NICKEL-PLATED BRASS ADAPTERS

Adapters





TECHNICAL CHARACTERISTICS



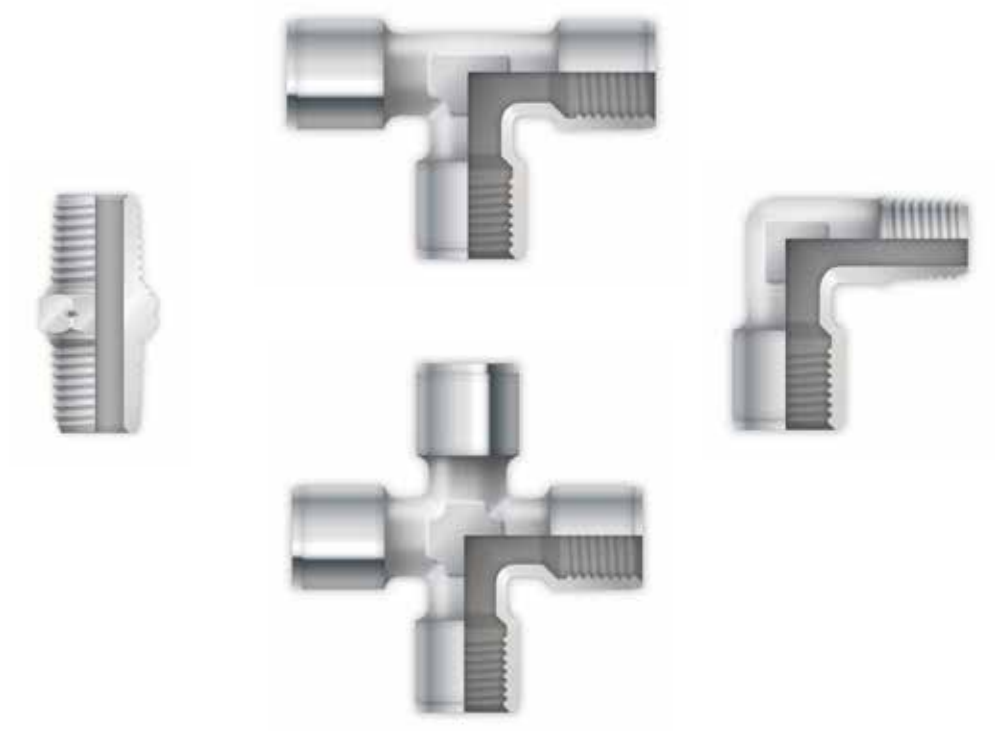
Reference Standard

1907/2006
REACH ✓

2011/65/CE
RoHS ✓

PED
2014/68/UE

**SILICON
FREE**



Maximum temperature

572 °F
300 °C



Component Parts and Materials

These fittings are made in **OT UNI EN 12164/5 CW 614/7N** and undergo a nickel-plating process. All other materials will be specified in catalog.



Pressure Rating

Vacuum ~ see data chart
-0.99 bar ~ see data chart
-0.099 MPa ~ see data chart



Size	Maximum pressure advised
1/8"	2175 PSI / 150 bar / 15 MPa
1/4"	1450 PSI / 100 bar / 10 MPa
3/8"	1080 PSI / 74 bar / 7.4 MPa
1/2"	725 PSI / 50 bar / 5 MPa



Connection Tubes

Tubes and general fittings.



Threads

Tapered gas in conformity with ISO7.1, BS 21, DIN 2999.
Parallel gas in conformity with ISO 228 Class A.
Metric in conformity with ISO R/262.
NPTF in conformity with ANSI B1.20.5

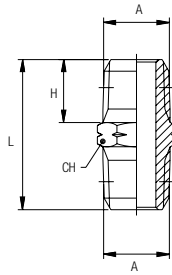


Media

- Compressed air
- Water
- Oils
- General fluids for pneumatic, hydraulic and oildynamic facilities.

82200N

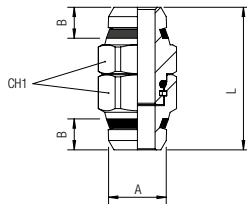
HEX NIPPLE



Part No.	A NPTF	H	L	CH
82200N-02	1/8	.335 (8,5)	.846 (21,5)	.472 (12)
82200N-04	1/4	.512 (13)	1.220 (31)	.551 (14)
82200N-06	3/8	.512 (13)	1.220 (31)	.748 (19)
82200N-08	1/2	.669 (17)	1.575 (40)	.866 (22)

82201N

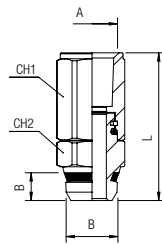
NIPPLE - MALE X MALE



Part No.	A NPTF	B	L	CH1
82201N-04-04	1/4	.275 (7)	1.279 (32,5)	.630 (16)
82201N-06-06	3/8	.295 (7,5)	1.240 (31,5)	.787 (20)

82203N

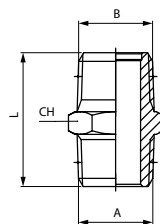
NIPPLE - MALE X FEMALE



Part No.	A NPTF	B	H	L	CH1	CH2
82203N-04-04	1/4	1/4	.275 (7)	1.476 (37,5)	.630 (16)	.630 (16)
82203N-06-06	3/8	3/8	.295 (7,5)	1.417 (36)	.787 (20)	.787 (20)
82203N-06-04	3/8	1/4	.275 (7)	1.496 (38)	.787 (20)	.630 (16)

82205

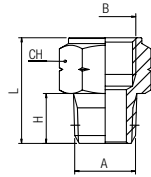
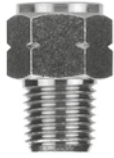
NIPPLE TAPER



Part No.	A BSPT	B NPTF	L	CH
82205-1/8-1/8	1/8	1/8	.807 (20,5)	.472 (12)
82205-1/4-1/4	1/4	1/4	1.142 (29)	.551 (14)
82205-3/8-3/8	3/8	3/8	1.161 (29,5)	.708 (18)
82205-1/2-1/2	1/2	1/2	1.437 (36,5)	.866 (22)
82205-3/4-3/4	3/4	3/4	1.594 (40,5)	1.063 (27)

82241N

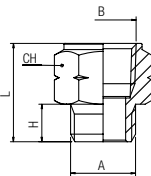
ADAPTER FEMALE G THREAD - MALE NPTF



Part No.	A NPTF	B BSPP	H	L	CH
82241N-32-M5	10/32 UNF	M5	.177 (4,5)	.472 (12)	.315 (8)
82241N-02-02	1/8	1/8	.335 (8,5)	.768 (19,5)	.551 (14)
82241N-04-04	1/4	1/4	.512 (13)	1.063 (27)	.669 (17)
82241N-06-06	3/8	3/8	.512 (13)	1.102 (28)	.866 (22)
82241N-08-08	1/2	1/2	.669 (17)	1.359 (34,5)	1.063 (27)

82242N

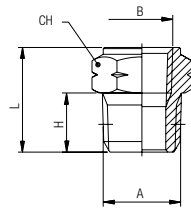
ADAPTER - FEMALE NPTF - MALE G THREAD



Part No.	A BSPP	B NPTF	H	L	CH
82242N-02	1/8	1/8	.236 (6)	.669 (17)	.551 (14)
82242N-04	1/4	1/4	.315 (8)	.906 (23)	.669 (17)
82242N-06	3/8	3/8	.354 (9)	.945 (24)	.866 (22)
82242N-08	1/2	1/2	.472 (12)	1.240 (31,5)	1.063 (27)

82280N

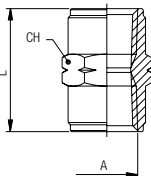
REDUCER FEMALE - MALE NPTF



Part No.	A NPTF	B NPTF	H	L	CH
82280N-02-32	1/8	10/32 UNF	.335 (8,5)	.571 (14,5)	.472 (12)
82280N-04-02	1/4	1/8	.512 (13)	.748 (19)	.551 (14)
82280N-06-02	3/8	1/8	.512 (13)	.768 (19,5)	.748 (19)
82280N-06-04	3/8	1/4	.512 (13)	.906 (23)	.748 (19)
82280N-08-04	1/2	1/4	.669 (17)	.965 (24,5)	.866 (22)
82280N-08-06	1/2	3/8	.669 (17)	.571 (14,5)	.472 (12)

82300N

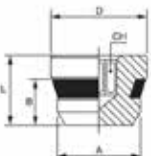
COUPLING FEMALE NPTF



Part No.	A NPTF	L	CH
82300N-02	1/8	.748 (19)	.551 (14)
82300N-04	1/4	1.063 (27)	.669 (17)
82300N-06	3/8	1.063 (27)	.866 (22)
82300N-08	1/2	1.378 (35)	1.063 (27)

82320

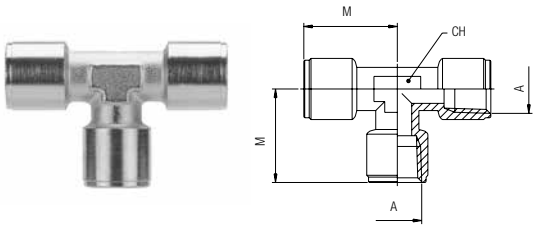
COUPLING FEMALE NPTF



Part No.	A	B	D	L	CH
82320-02	1/8	.217 (5,5)	.394 (10)	.315 (8)	.197 (5)
82320-04	1/4	.275 (7)	.551 (14)	.394 (10)	.236 (6)
82320-06	3/8	.295 (7,5)	.669 (17)	.433 (11)	.315 (8)
82320-08	1/2	.354 (9)	.787 (20)	.512 (13)	.433 (11)

82400N

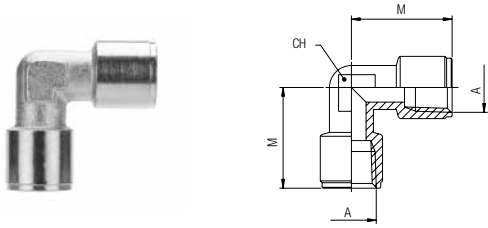
TEE FEMALE NPTF



Part No.	A NPTF	M	CH
82400N-02	1/8	.669 (19,5)	.472 (12)
82400N-04	1/4	.906 (26)	.512 (13)
82400N-06	3/8	.945 (28,5)	.630 (16)
82400N-08	1/2	1.240 (33,5)	.787 (20)

82510N

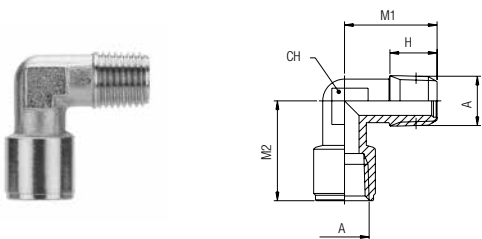
ELBOW - FEMALE NPTF



Part No.	A NPTF	M	CH
82510N-02	1/8	.846 (21,5)	.433 (11)
82510N-04	1/4	1.083 (27,5)	.512 (13)
82510N-06	3/8	1.161 (29,5)	.669 (17)
82510N-08	1/2	1.339 (34)	.787 (20)

82520N

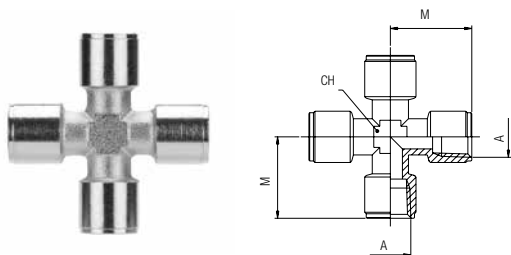
ELBOW - FEMALE - MALE NPTF



Part No.	A NPTF	H	M1	M2	CH
82520N-02	1/8	.335 (8,5)	.827 (21)	.748 (19)	.433 (11)
82520N-04	1/4	.512 (13)	1.083 (27,5)	1.004 (25,5)	.512 (13)
82520N-06	3/8	.512 (13)	1.161 (29,5)	1.083 (27,5)	.669 (17)
82520N-08	1/2	.669 (17)	1.339 (34)	1.260 (32)	.787 (20)

82620N

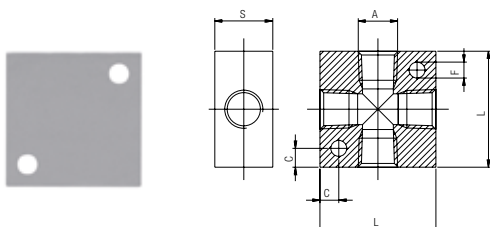
CROSS - FEMALE NPTF



Part No.	A NPTF	M	CH
82620N-02	1/8	.787 (20)	.433 (11)
82620N-04	1/4	1.063 (27)	.512 (13)
82620N-06	3/8	1.142 (29)	.669 (17)

82640N

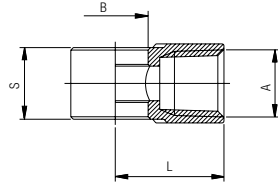
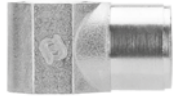
ALUMINUM DISTRIBUTION BLOCK - FEMALE



Part No.	A NPTF	L	S	F	C
82640N-02	1/8	.984 (25)	.630 (16)	.177 (4,5)	.169 (4,5)
82640N-04	1/4	1.575 (40)	.787 (20)	.217 (5,5)	.256 (6,5)
82640N-06	3/8	1.969 (50)	.984 (25)	.217 (5,5)	.295 (7,5)
82640N-08	1/2	1.969 (50)	1.181 (30)	.217 (5,5)	.295 (7,5)

82690

SINGLE BANJO BODY FEMALE



Part No.	A NPTF	B	L	S	CH
82690-32	10/32	.240 (6.1)	.570 (14.5)	.484 (12.3)	N/A
82690-02	1/8	.394 (10)	.649 (16.5)	.590 (15)	.551 (14)
82690-04	1/4	.531 (13.5)	.866 (22)	.669 (17)	.708 (18)
82690-06	3/8	.688 (17.5)	1.043 (26.5)	.787 (20)	.827 (21)

NPTF BANJO STEM ASSEMBLIES

BANJO STEM

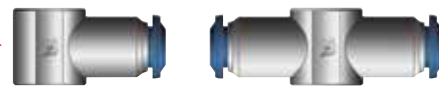
Part No.
81410
81420
81430



NYLON WASHER



**BANJO BODY
INCH
OR METRIC**



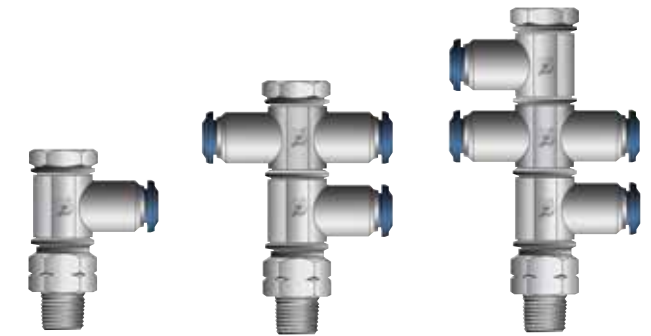
NYLON WASHER



ADAPTER



Examples of various banjo stems with single and double banjo bodies



Single banjo stem

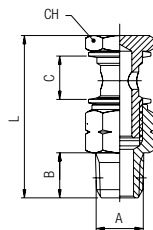
Double banjo stem

Triple banjo stem

With nylon banjo body remove the washer.

81410

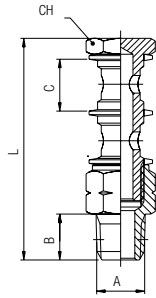
SINGLE BANJO STEM



Part No.	A NPTF	B	C	L	CH
81410-32	10/32	.177 (4.5)	.492 (15.5)	1.200 (30.5)	.315 (8)
81410-02	1/8	.334 (8.5)	.591 (15)	1.653 (42)	.551 (14)
81410-04	1/4	.511 (13)	.669 (17)	2.047 (52)	.669 (17)
81410-06	3/8	.511 (13)	.787 (20)	2.106 (53.5)	.748 (19)

81420

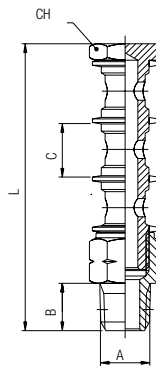
DOUBLE BANJO STEM



Part No.	A NPTF	B	C	L	CH
81420-02	1/8	.334 (8,5)	.591 (15)	2.283 (58)	.551 (14)
81420-04	1/4	.511 (13)	.669 (17)	2.755 (70)	.669 (17)
81420-06	3/8	.511 (13)	.787 (20)	3.031 (77)	.748 (19)

81430

TRIPLE BANJO STEM



Part No.	A NPTF	B	C	L	CH
81430-02	1/8	.334 (8,5)	.591 (15)	2.913 (74)	.551 (14)
81430-04	1/4	.511 (13)	.669 (17)	3.464 (88)	.669 (17)
81430-06	3/8	.511 (13)	.787 (20)	3.897 (99)	.748 (19)

BSPP BANJO STEM ASSEMBLIES

Examples of various banjo stems with single and double banjo bodies

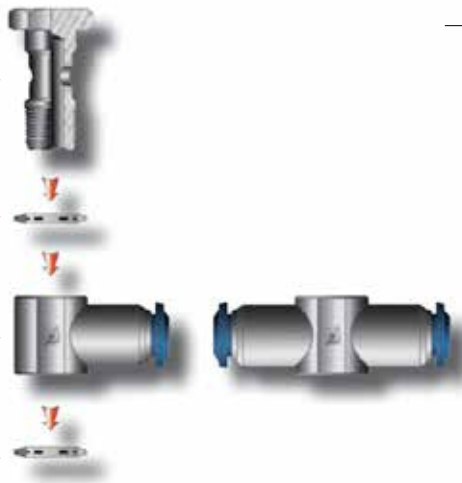
BANJO STEM

Part No.
51410
51420
51430

NYLON WASHER

BANJO BODY
INCH
OR METRIC

NYLON WASHER



**Single
banjo stem**

**Double
banjo stem**

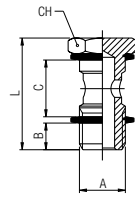
**Triple
banjo stem**



With nylon banjo body remove the washer.

51410

SINGLE BANJO STEM



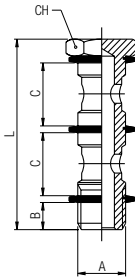
Part No.	A BSPP	B	C	L	CH
51410-M5	M5	.157 (4)	.02 (12.5)	.866 (22)	.315 (8)
51410-M6	M6	.197 (5)	.02 (12.5)	.906 (23)	.315 (8)
51410-1/8	1/8	.236 (6)	.591 (15)	1.102 (28)	.551 (14)
51410-1/4	1/4	.315 (8)	.669 (17)	1.26 (32)	.669 (17)
51410-3/8	3/8	.354 (9)	.787 (20)	1.417 (36)	.748 (19)
51410-1/2	1/2	.394 (10)	.945 (24)	1.654 (42)	.945 (24)
51410-M12x1.5 *M12X1.5		.315 (8)	.669 (17)	1.26 (32)	.669 (17)

This item will be supplied with the PA66 washers (ART. 1610).

* With this banjo stem using 1/4 orienting banjo body.

51420

DOUBLE BANJO STEM



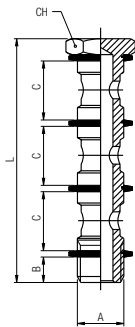
Part No.	A BSPP	B	C	L	CH
51420-1/8	1/8	.236 (6)	.591 (15)	.072 (44,5)	.551 (14)
51420-1/4	1/4	.315 (8)	.669 (17)	.082 (50,5)	.669 (17)
51420-3/8	3/8	.354 (9)	.787 (20)	2.283 (58)	.748 (19)
51420-1/2	1/2	.394 (10)	.945 (24)	2.677 (68)	.945 (24)
51420-M12x1.5 *M12X1.5		.315 (8)	.669 (17)	.082 (50,5)	.669 (17)

This item will be supplied with the PA66 washers (ART. 1610).

* With this banjo stem using 1/4 orienting banjo body.

51430

TRIPLE BANJO STEM



Part No.	A BSPP	B	C	L	CH
51430-1/8	1/8	.236 (6)	.591 (15)	2.402 (61)	.551 (14)
51430-1/4	1/4	.315 (8)	.669 (17)	2.717 (69)	.669 (17)
51430-3/8	3/8	.354 (9)	.787 (20)	3.15 (80)	.748 (19)
51430-1/2	1/2	.394 (10)	.945 (24)	3.701 (94)	.945 (24)

This item will be supplied with the PA66 washers (ART. 1610).



N11

PA 11 TUBING



Advantages

- | | | |
|---|--------------------|----------------|
| 1 | COMPOUND: | PA12 |
| 2 | TEMPERATURE RANGE | -60° / +200° |
| 3 | DIAMETER TOLERANCE | -.004 / +.002 |
| 4 | VACUUM RATING | |
| 5 | HARDNESS | 78 Rockwell R |
| 6 | COLOR: | Black, Natural |

Part No.	OD	ID	Wall	Color	Working Pressure 75°F	Working Pressure 150°F	Bend Radius	Standard Pack
N11-021-100	1/8	.93	.016	Black	225 PSI	123 PSI	.375	100' Bag
N11-022-100	1/8	.93	.016	Natural	225 PSI	123 PSI	.375	100' Bag
N11-531-100	5/32 (4)	.108	.016	Black	225 PSI	123 PSI	.375	100' Bag
N11-532-100	5/32 (4)	.108	.016	Natural	225 PSI	123 PSI	.375	100' Bag
N11-041-100	1/4	.205	.035	Black	225 PSI	123 PSI	.375	100' Bag
N11-042-100	1/4	.205	.016	Natural	225 PSI	123 PSI	.375	100' Bag
N11-051-100	5/16 (8)	.232	.016	Black	225 PSI	123 PSI	.375	100' Bag
N11-052-100	5/16 (8)	.232	.016	Natural	225 PSI	123 PSI	.375	100' Bag
N11-061-100	3/8	.275	.016	Black	225 PSI	123 PSI	.375	100' Bag
N11-062-100	3/8	.275	.016	Natural	225 PSI	123 PSI	.375	100' Bag
N11-081-100	1/2	.375	.016	Black	225 PSI	123 PSI	.375	100' Bag
N11-082-100	1/2	.375	.016	Natural	225 PSI	123 PSI	.375	100' Bag

PU

POLYURETHANE TUBING - INCH SIZES


Advantages

1	COUMPOUND:	PU
2	TEMPERATURE RANGE	-40° / -165°
3	DIAMETER TOLERANCE	+/- .003 - .004
4	VACUUM RATING	125 psi - 200 psi
5	HARDNESS	98 Shore A
6	COLOR:	Black, Natural, Red, Blue

Part Number	OD	ID	Wall	Color	Working Pressure at 68°F	Best Pressure at 68°F	Bend Radius	Standard Pack
PU157-0-100	5/32"	3/32"	0.32"	Natural	130 psi	400 psi	0.47"	100' Bag
PU157-1-100	5/32"	3/32"	0.32"	Red	130 psi	400 psi	0.47"	100' Bag
PU157-2-100	5/32"	3/32"	0.32"	Black	130 psi	400 psi	0.47"	100' Bag
PU157-3-100	5/32"	3/32"	0.32"	Blue	130 psi	400 psi	0.47"	100' Bag
PU340-0-100	3/16"	1/8"	0.32"	Natural	130 psi	330 psi	0.55"	100' Bag
PU340-1-100	3/16"	1/8"	0.32"	Red	130 psi	330 psi	0.55"	100' Bag
PU340-2-100	3/16"	1/8"	0.32"	Black	130 psi	330 psi	0.55"	100' Bag
PU340-3-100	3/16"	1/8"	0.32"	Blue	130 psi	330 psi	0.55"	100' Bag
PU445-0-100	1/4"	5/32"	0.45"	Natural	130 psi	370 psi	0.75"	100' Bag
PU445-1-100	1/4"	5/32"	0.45"	Red	130 psi	370 psi	0.75"	100' Bag
PU445-2-100	1/4"	5/32"	0.45"	Black	130 psi	370 psi	0.75"	100' Bag
PU445-3-100	1/4"	5/32"	0.45"	Blue	130 psi	370 psi	0.75"	100' Bag
PU562-0-100	5/16"	3/16"	0.62"	Natural	130 psi	330 psi	0.95"	100' Bag
PU562-1-100	5/16"	3/16"	0.62"	Red	130 psi	330 psi	0.95"	100' Bag
PU562-2-100	5/16"	3/16"	0.62"	Black	130 psi	330 psi	0.95"	100' Bag
PU562-3-100	5/16"	3/16"	0.62"	Blue	130 psi	330 psi	0.95"	100' Bag
PU662-0-100	3/8"	1/4"	0.62"	Natural	130 psi	330 psi	1.5"	100' Bag
PU662-1-100	3/8"	1/4"	0.62"	Red	130 psi	330 psi	1.5"	100' Bag
PU662-2-100	3/8"	1/4"	0.62"	Black	130 psi	330 psi	1.5"	100' Bag
PU662-3-100	3/8"	1/4"	0.62"	Blue	130 psi	330 psi	1.5"	100' Bag
PU890-0-100	1/2"	3/8"	0.62"	Natural	130 psi	330 psi	1.97"	100' Bag
PU890-1-100	1/2"	3/8"	0.62"	Red	130 psi	330 psi	1.97"	100' Bag
PU890-2-100	1/2"	3/8"	0.62"	Black	130 psi	330 psi	1.97"	100' Bag
PU890-3-100	1/2"	3/8"	0.62"	Blue	130 psi	330 psi	1.97"	100' Bag

PU

POLYURETHANE TUBING - METRIC SIZES


Advantages

- | | | |
|---|--------------------|---------------------------|
| 1 | COMPOUND: | PU |
| 2 | TEMPERATURE RANGE | -40° / -165° |
| 3 | DIAMETER TOLERANCE | +/- .003 - .004 |
| 4 | VACUUM RATING | 125 psi - 200 psi |
| 5 | HARDNESS | 98 Shore A |
| 6 | COLOR: | Black, Natural, Red, Blue |

Part Number	OD	ID	Wall	Color	Working Pressure at 68°F	Best Pressure at 68°F	Bend Radius	Standard Pack
PU4MM-0-100	4 mm	2.5 mm	0.75 mm	Natural	174 psi	536 psi	20 mm	100' Bag
PU4MM-1-100	4 mm	2.5 mm	0.75 mm	Red	174 psi	536 psi	20 mm	100' Bag
PU4MM-2-100	4 mm	2.5 mm	0.75 mm	Black	174 psi	536 psi	20 mm	100' Bag
PU4MM-3-100	4 mm	2.5 mm	0.75 mm	Blue	174 psi	536 psi	20 mm	100' Bag
PU6MM-0-100	6 mm	4 mm	1 mm	Natural	159 psi	464 psi	30 mm	100' Bag
PU6MM-1-100	6 mm	4 mm	1 mm	Red	159 psi	464 psi	30 mm	100' Bag
PU6MM-2-100	6 mm	4 mm	1 mm	Black	159 psi	464 psi	30 mm	100' Bag
PU6MM-3-100	6 mm	4 mm	1 mm	Blue	159 psi	464 psi	30 mm	100' Bag
PU8MM-0-100	8 mm	5.5 mm	1.25 mm	Natural	145 psi	435 psi	45 mm	100' Bag
PU8MM-1-100	8 mm	5.5 mm	1.25 mm	Red	145 psi	435 psi	45 mm	100' Bag
PU8MM-2-100	8 mm	5.5 mm	1.25 mm	Black	145 psi	435 psi	45 mm	100' Bag
PU8MM-3-100	8 mm	5.5 mm	1.25 mm	Blue	145 psi	435 psi	45 mm	100' Bag
PU10MM-0-100	10 mm	7 mm	1.5 mm	Natural	130 psi	406 psi	35 mm	100' Bag
PU10MM-1-100	10 mm	7 mm	1.5 mm	Red	130 psi	406 psi	35 mm	100' Bag
PU10MM-2-100	10 mm	7 mm	1.5 mm	Black	130 psi	406 psi	35 mm	100' Bag
PU10MM-3-100	10 mm	7 mm	1.5 mm	Blue	130 psi	406 psi	35 mm	100' Bag
PU12MM-0-100	12 mm	8 mm	2 mm	Natural	159 psi	464 psi	30 mm	100' Bag
PU12MM-1-100	12 mm	8 mm	2 mm	Red	159 psi	464 psi	30 mm	100' Bag
PU12MM-2-100	12 mm	8 mm	2 mm	Black	159 psi	464 psi	30 mm	100' Bag
PU12MM-3-100	12 mm	8 mm	2 mm	Blue	159 psi	464 psi	30 mm	100' Bag
PU14MM-0-100	14 mm	10 mm	2 mm	Natural	130 psi	391 psi	120 mm	100' Bag
PU14MM-1-100	14 mm	10 mm	2 mm	Red	130 psi	391 psi	120 mm	100' Bag

R811

RECOIL ASSEMBLIES

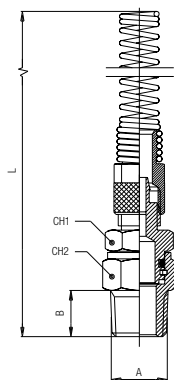


Part No.	Fitting Male NPTF	ID	OD	Lenght Straight	Lenght Working	Lenght Retracted	Coil Diameter	Working Pressure 75°F	Working Pressure 150°F
R811-043-012	1/4	1/4	.309	12	10 1/2	5 1/4	3 1/2	185 PSI	100 PSI
R811-043-025	1/4	1/4	.309	25	22	10 1/2	3 1/2	185 PSI	100 PSI
R811-043-050	1/4	1/4	.309	50	44	21	3 1/2	185 PSI	100 PSI
R811-043-100	1/4	1/4	.309	100	88	42	3 1/2	185 PSI	100 PSI
R811-053-012	3/8	3/8	.470	12	10	5	5 5/8	185 PSI	100 PSI
R811-053-025	3/8	3/8	.470	25	10	10 1/4	5 5/8	185 PSI	100 PSI
R811-053-050	3/8	3/8	.470	50	10	20 1/4	5 5/8	185 PSI	100 PSI
R811-053-100	3/8	3/8	.470	100	10	41	5 5/8	185 PSI	100 PSI
R811-083-012	1/2	1/2	.625	12	8.5	4 1/4	9	185 PSI	100 PSI
R811-083-025	1/2	1/2	.625	25	18	9	9	185 PSI	100 PSI
R811-083-050	1/2	1/2	.625	50	36	18	9	185 PSI	100 PSI
R811-083-100	1/2	1/2	.625	100	72	36	9	185 PSI	100 PSI

ACCESSORIES

81026

RECOIL FITTING



Part No.	A NPTF	B	C	L	CH
81026-04	1/4	.236 (6)	.591 (15)	2.402 (61)	.551 (14)
81026-06	3/8	.315 (8)	.669 (17)	2.717 (69)	.669 (17)
81026-08	1/2	.354 (9)	.787 (20)	3.150 (80)	.748 (19)

1750

TUBE CUTTER

Part No.
1750

