

# Valves

## Solenoid Pilot Valves



**01V**  
Pg. 13.4

## Externally Piloted Solenoid Valves



**01V - X1V**  
Pg. 13.10

## Air Pilot Valves



**01V**  
Pg. 13.24

## Manual Valves



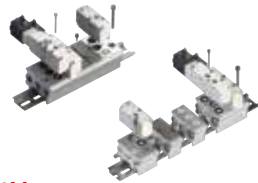
**01V - X1V**  
Pg. 13.30

## Mechanically Actuated Valves



**01V**  
Pg. 13.40

## Din Rail Mounted, Fixed Length and Modular Manifold Bases



**01V**  
Pg. 13.43

## Micro Valves



**02V**  
Pg. 13.49

## 16 mm Valves



**03V**  
Pg. 13.52

## Micro Valves, Panel Mounted



**04V**  
Pg. 13.56

## Individual and Manifold Base Mounted Valves



**05V**  
Pg. 13.59

## Pedal Valves



**06V**  
Pg. 13.67

## Solenoid Valves



**07V**  
Pg. 13.69

## Miniature Solenoid Valves 10 mm



**07V**  
Pg. 13.71

## Miniature Solenoid Valves 15 mm



**07V**  
Pg. 13.73

## NAMUR Standard Valves



**08V**  
Pg. 13.77

## Valves ISO 5599 - Size 1



**10V**  
Pg. 13.84

## Valves ISO 5599 - Size 2



**11V**  
Pg. 13.88

## Solenoids and Connectors



Pg. 13.20 - Pg. 13.23

MANUAL, MECHANICAL, AIR PILOT AND SOLENOID PILOT VALVES



**Valves**

INLINE VALVES



**SOLENOID PILOT VALVES**

**TECHNICAL CHARACTERISTICS**



**Reference Standard**

- 1907/2006 REACH ✓
- 2011/65/CE RoHS ✓
- PED 2014/68/UE
- ATEX 2014/34/UE

**Component Parts and Materials**

- Anodised and painted aluminium body
- Chemical nickel-plated spool
- NBR seals

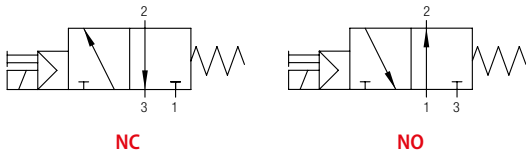
		1/8	1/4	3/8	1/2
	THREADED	G 1/8 NPTF 1/8	G 1/4 NPTF 1/4	G 3/8 NPTF 3/8	G 1/2 NPTF 1/2
	6 bar FLOW RATE with Δp 1 bar	740 NI/min	1200 NI/min	2000 NI/min	5000 NI/min
	OPERATING PRESSURE	Monostable	2 ÷ 10 bar 29 ÷ 145 psi		
		Bistable	1 ÷ 10 bar 14.5 ÷ 145 psi		
	TEMPERATURE	min	-10 °C 14 °F		
		max	+60 °C 140 °F		
	SOLENOID VOLTAGE	24V DC - 12V DC - 24V AC - 110V AC - 220V AC			
	MINIMUM POWER	2W - 3VA			
	MANUAL CONTROL	BISTABLE			
	TORQUE OF TIGHTENING THE NUT SOLENOID	0.6 Nm			

Series	Actuation	Reactuation	Function	Size	Thread	
<b>0 1 V</b>	<b>S</b> S = Solenoid	<b>0</b> 0 = Monostable spring return 1 = Bistable	<b>3</b> 3 = 3/2 5 = 5/2 7 = 5/3	<b>NC</b> NO = Normally open NC = Normally closed CC = All Ports Blocked OC = Cylinder Ports Open to Exhaust PC = Cylinder Ports Pressurized 00 = Function not provided	<b>0 2</b> 02 = 1/8 03 = 1/4 04 = 3/8 05 = 1/2	<b>□</b> = G N = NPTF



**3/2**

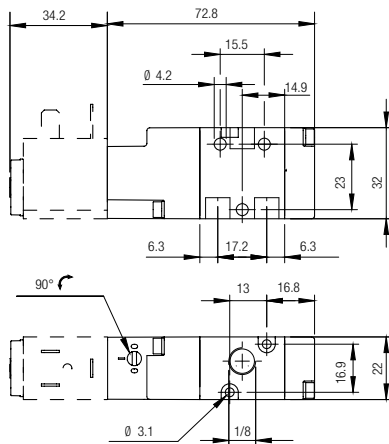
**SINGLE SOLENOID PILOT - SPRING RETURN**



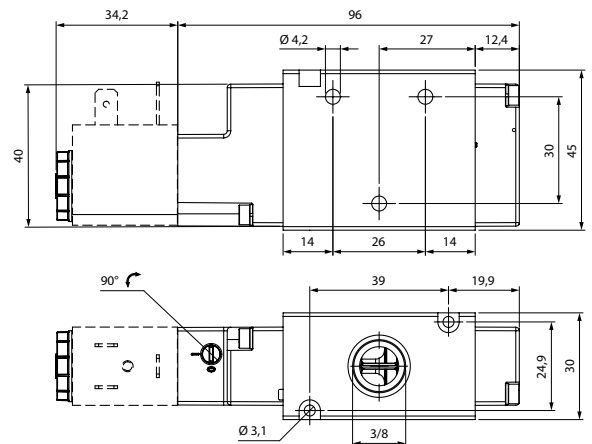
Part No.	Function	Size	Pack.
<b>01V S0 3 NC 02</b>	3/2 <b>NC</b>	G 1/8	1
<b>01V S0 3 NC 03</b>	3/2 <b>NC</b>	G 1/4	1
<b>01V S0 3 NC 05</b>	3/2 <b>NC</b>	G 1/2	1
<b>01V S0 3 NO 02</b>	3/2 <b>NO</b>	G 1/8	1
<b>01V S0 3 NO 03</b>	3/2 <b>NO</b>	G 1/4	1
<b>01V S0 3 NO 05</b>	3/2 <b>NO</b>	G 1/2	1

Part No.	Function	Size	Pack.
<b>01V S0 3 NC 02 N</b>	3/2 <b>NC</b>	NPTF 1/8	1
<b>01V S0 3 NC 03 N</b>	3/2 <b>NC</b>	NPTF 1/4	1
<b>01V S0 3 NC 04 N</b>	3/2 <b>NC</b>	NPTF 3/8	1
<b>01V S0 3 NC 05 N</b>	3/2 <b>NC</b>	NPTF 1/2	1
<b>01V S0 3 NO 02 N</b>	3/2 <b>NO</b>	NPTF 1/8	1
<b>01V S0 3 NO 03 N</b>	3/2 <b>NO</b>	NPTF 1/4	1
<b>01V S0 3 NO 04 N</b>	3/2 <b>NO</b>	NPTF 3/8	1
<b>01V S0 3 NO 05 N</b>	3/2 <b>NO</b>	NPTF 1/2	1

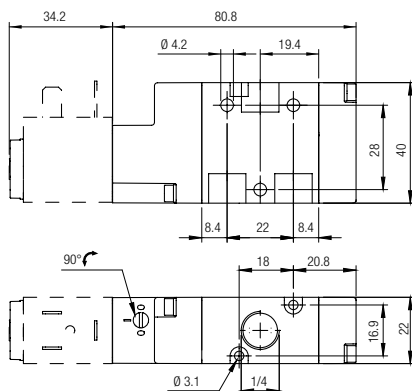
**G 1/8 - NPTF 1/8**



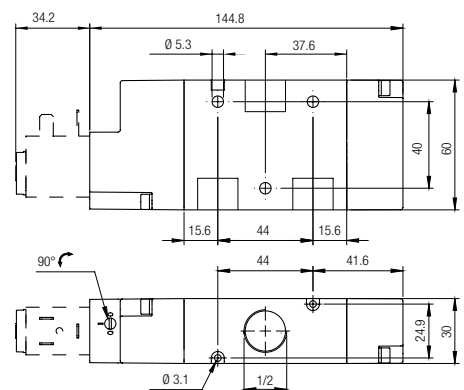
**NPTF 3/8**



**G 1/4 - NPTF 1/4**

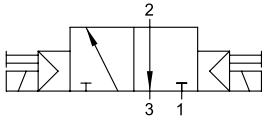


**G 1/2 - NPTF 1/2**



**3/2**

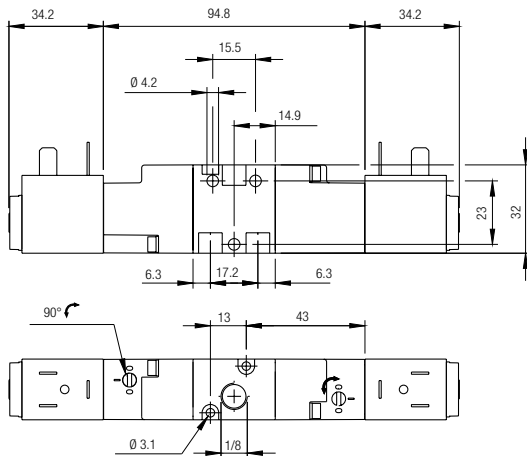
**DOUBLE SOLENOID PILOT**



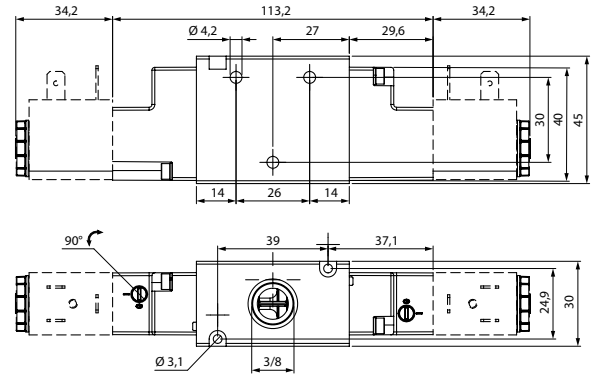
Part No.	Function	Size	Pack.
01V S1 3 00 02	3/2	G 1/8	1
01V S1 3 00 03	3/2	G 1/4	1
01V S1 3 00 05	3/2	G 1/2	1

Part No.	Function	Size	Pack.
01V S1 3 00 02 N	3/2	NPTF 1/8	1
01V S1 3 00 03 N	3/2	NPTF 1/4	1
01V S1 3 00 04 N	3/2	NPTF 3/8	1
01V S1 3 00 05 N	3/2	NPTF 1/2	1

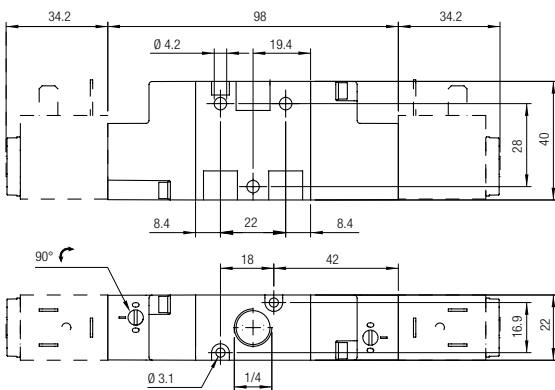
**G 1/8 - NPTF 1/8**



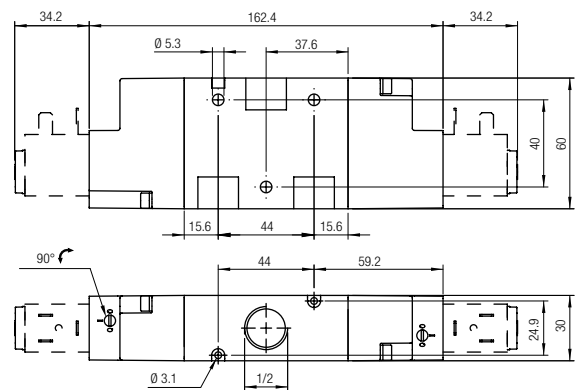
**NPTF 3/8**



**G 1/4 - NPTF 1/4**

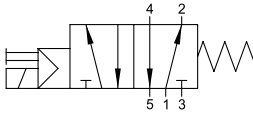


**G 1/2 - NPTF 1/2**



**5/2**

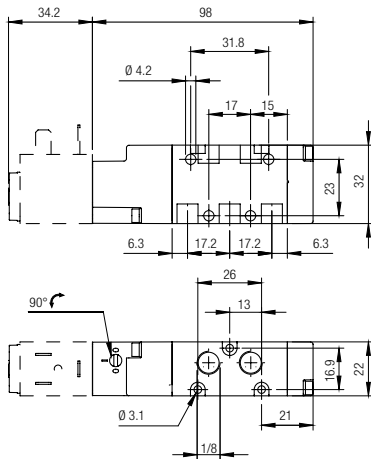
**SINGLE SOLENOID PILOT - SPRING RETURN**



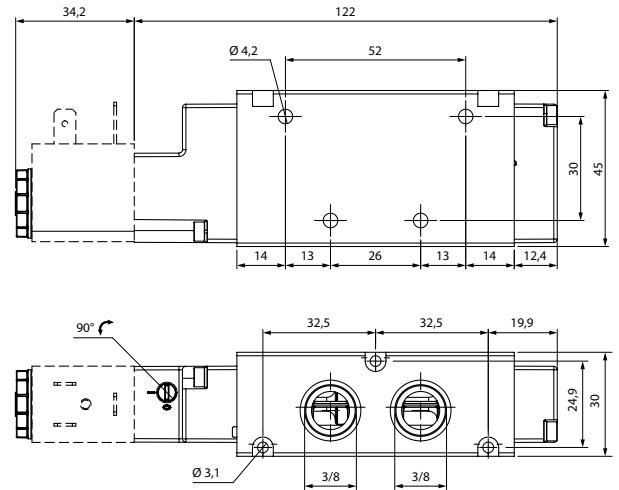
Part No.	Function	Size	Pack.
<b>01V SO 5 00 02</b>	5/2	G 1/8	1
<b>01V SO 5 00 03</b>	5/2	G 1/4	1
<b>01V SO 5 00 05</b>	5/2	G 1/2	1

Part No.	Function	Size	Pack.
<b>01V SO 5 00 02 N</b>	5/2	NPTF 1/8	1
<b>01V SO 5 00 03 N</b>	5/2	NPTF 1/4	1
<b>01V SO 5 00 04 N</b>	5/2	NPTF 3/8	1
<b>01V SO 5 00 05 N</b>	5/2	NPTF 1/2	1

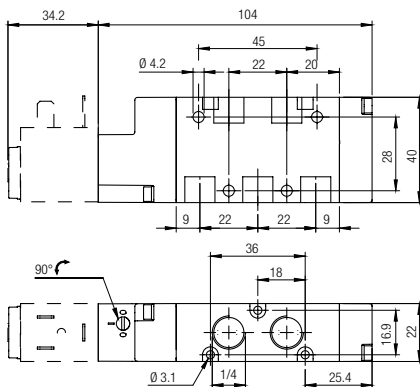
**G 1/8 - NPTF 1/8**



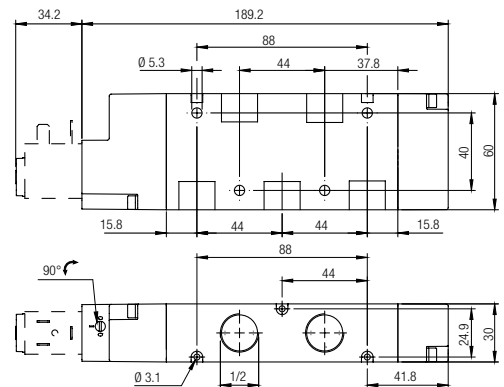
**NPTF 3/8**



**G 1/4 - NPTF 1/4**

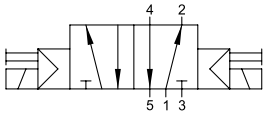


**G 1/2 - NPTF 1/2**



**5/2**

**DOUBLE SOLENOID PILOT**

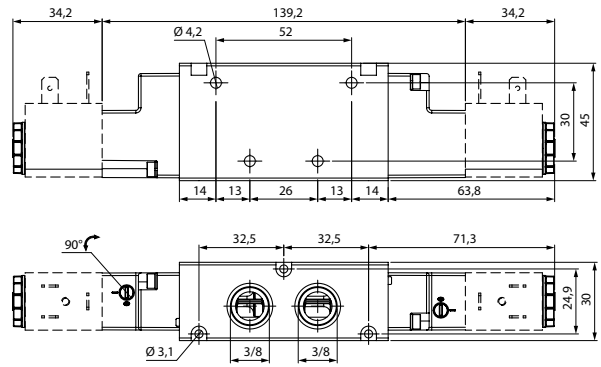
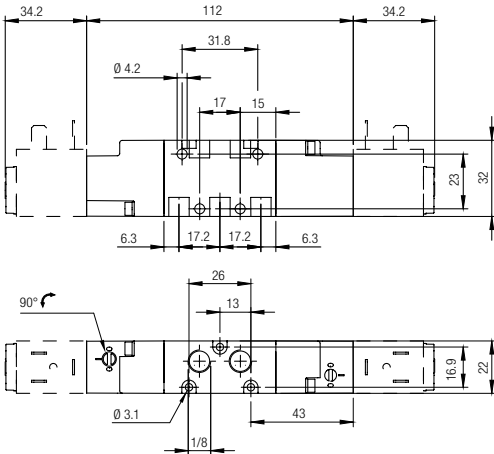


Part No.	Function	Size	Pack.
01V S1 5 00 02	5/2	G 1/8	1
01V S1 5 00 03	5/2	G 1/4	1
01V S1 5 00 05	5/2	G 1/2	1

Part No.	Function	Size	Pack.
01V S1 5 00 02 N	5/2	NPTF 1/8	1
01V S1 5 00 03 N	5/2	NPTF 1/4	1
01V S1 5 00 04 N	5/2	NPTF 1/2	1
01V S1 5 00 05 N	5/2	NPTF 1/2	1

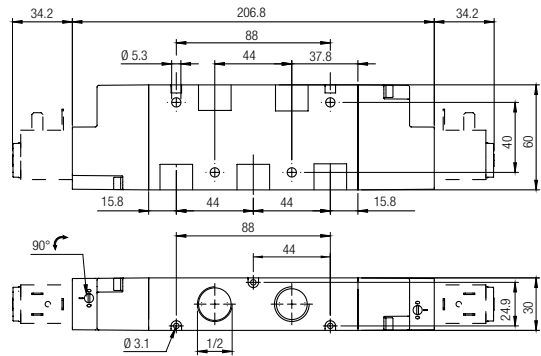
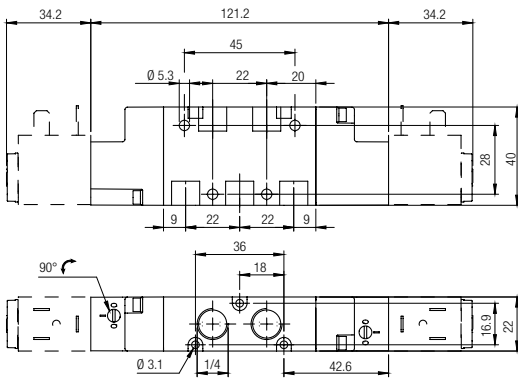
**G 1/8 - NPTF 1/8**

**NPTF 3/8**



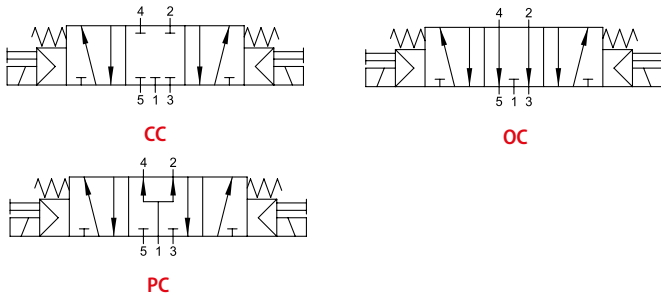
**G 1/4 - NPTF 1/4**

**G 1/2 - NPTF 1/2**



**5/3**

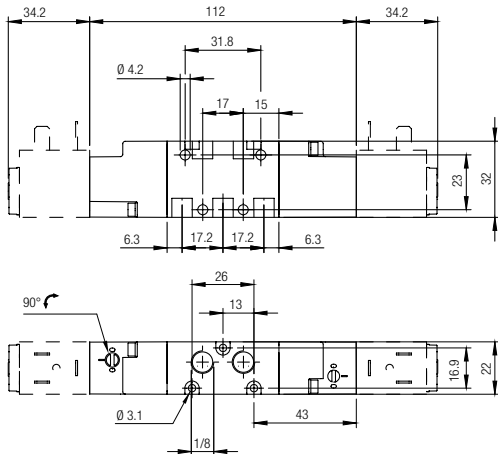
**DOUBLE SOLENOID PILOT - SPRING CENTERED**



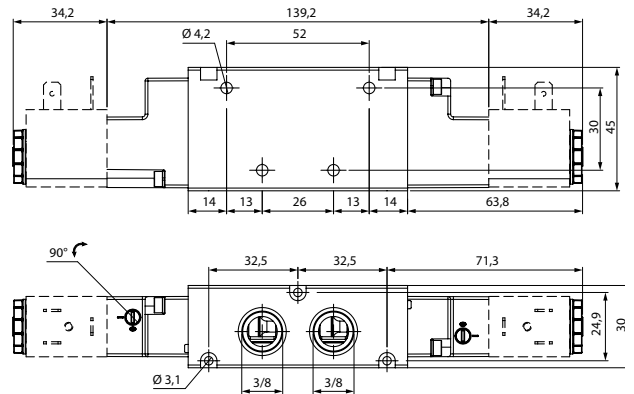
Part No.	Function	Size	Pack.
01V S0 7 CC 02	5/3 CC	G 1/8	1
01V S0 7 CC 03	5/3 CC	G 1/4	1
01V S0 7 CC 05	5/3 CC	G 1/2	1
01V S0 7 OC 02	5/3 OC	G 1/8	1
01V S0 7 OC 03	5/3 OC	G 1/4	1
01V S0 7 OC 05	5/3 OC	G 1/2	1
01V S0 7 PC 02	5/3 PC	G 1/8	1
01V S0 7 PC 03	5/3 PC	G 1/4	1
01V S0 7 PC 05	5/3 PC	G 1/2	1

Part No.	Function	Size	Pack.
01V S0 7 CC 02 N	5/3 CC	NPTF 1/8	1
01V S0 7 CC 03 N	5/3 CC	NPTF 1/4	1
01V S0 7 CC 04 N	5/3 CC	NPTF 3/8	1
01V S0 7 CC 05 N	5/3 CC	NPTF 1/2	1
01V S0 7 OC 02 N	5/3 OC	NPTF 1/8	1
01V S0 7 OC 03 N	5/3 OC	NPTF 1/4	1
01V S0 7 OC 04 N	5/3 OC	NPTF 3/8	1
01V S0 7 OC 05 N	5/3 OC	NPTF 1/2	1
01V S0 7 PC 02 N	5/3 PC	NPTF 1/8	1
01V S0 7 PC 03 N	5/3 PC	NPTF 1/4	1
01V S0 7 PC 04 N	5/3 PC	NPTF 3/8	1
01V S0 7 PC 05 N	5/3 PC	NPTF 1/2	1

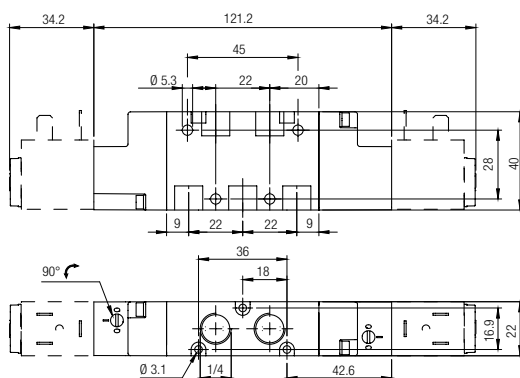
**G 1/8 - NPTF 1/8**



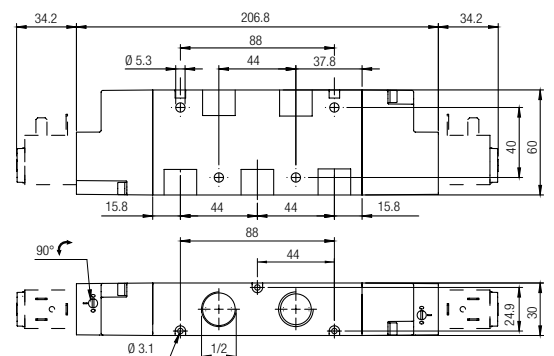
**NPTF 3/8**



**G 1/4 - NPTF 1/4**



**G 1/2 - NPTF 1/2**





**EXTERNALLY PILOTED SOLENOID VALVES**



**TECHNICAL CHARACTERISTICS**



**Reference Standard**

1907/2006  
**REACH** ✓

2011/65/CE  
**RoHS** ✓

PED  
2014/68/UE

ATEX  
2014/34/UE



**Component Parts and Materials**

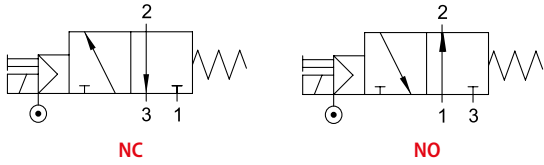
- Anodised and painted aluminium body
- Chemical nickel-plated spool
- NBR seals

		1/8	1/4
	THREADED	G 1/8 NPTF 1/8	G 1/4 NPTF 1/4
	6 bar FLOW RATE with Δp 1 bar	740 NI/min	1200 NI/min
	OPERATING PRESSURE	Vacuum ÷ 10 bar Vacuum ÷ 145 psi	
	PRESSURE DRIVE	Monostable	2 ÷ 10 bar 29 ÷ 145 psi
		Bistable	1 ÷ 10 bar 14.5 ÷ 145 psi
	TEMPERATURE	min	-10 °C 14 °F
		max	+60 °C 140 °F
	SOLENOID VOLTAGE	24V DC - 12V DC - 24V AC 110V AC - 220V AC	
	MINIMUM POWER	2W - 3VA	
	MANUAL CONTROL	BISTABLE	
	TORQUE OF TIGHTENING THE NUT SOLENOID	0.6 Nm	

Series	Actuation	Reactuation	Function	Size	Thread	
<b>0 1 V</b>	<b>A</b> A = Solenoid Assisted	<b>0</b> 0 = Monostable spring return 1 = Bistable	<b>3</b> 3 = 3/2 5 = 5/2 7 = 5/3	<b>NC</b> NO = Normally open NC = Normally closed CC = All Ports Blocked OC = Cylinder Ports Open to Exhaust PC = Cylinder Ports Pressurized 00 = Function not provided	<b>0 2</b> 02 = 1/8 03 = 1/4	 = G N = NPTF

**3/2**

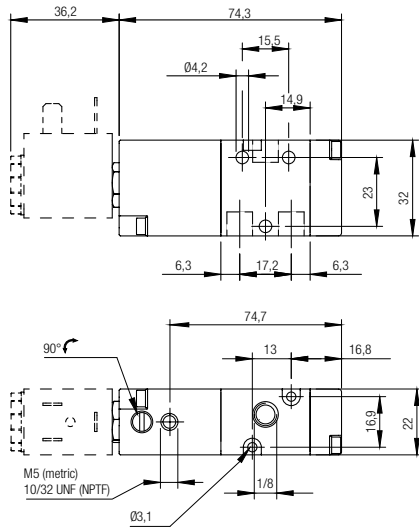
**SINGLE SOLENOID EXTERNAL PILOT - SPRING RETURN**



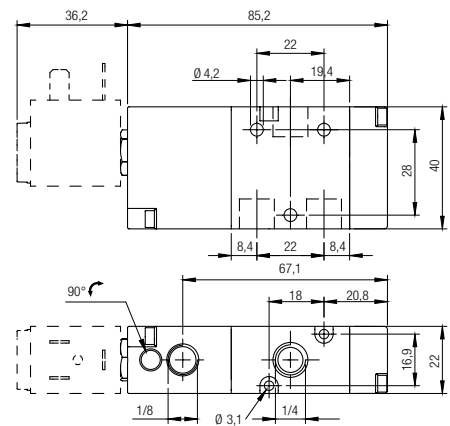
Part No.	Function	Size	Pack.
<b>01V A0 3 NC 02</b>	3/2 <b>NC</b>	G 1/8	1
<b>01V A0 3 NC 03</b>	3/2 <b>NC</b>	G 1/4	1
<b>01V A0 3 NO 02</b>	3/2 <b>NO</b>	G 1/8	1
<b>01V A0 3 NO 03</b>	3/2 <b>NO</b>	G 1/4	1

Part No.	Function	Size	Pack.
<b>01V A0 3 NC 02 N</b>	3/2 <b>NC</b>	NPTF 1/8	1
<b>01V A0 3 NC 03 N</b>	3/2 <b>NC</b>	NPTF 1/4	1
<b>01V A0 3 NO 02 N</b>	3/2 <b>NO</b>	NPTF 1/8	1
<b>01V A0 3 NO 03 N</b>	3/2 <b>NO</b>	NPTF 1/4	1

**G 1/8 - NPTF 1/8**

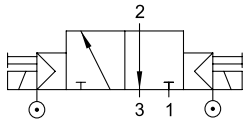


**G 1/4 - NPTF 1/4**



**3/2**

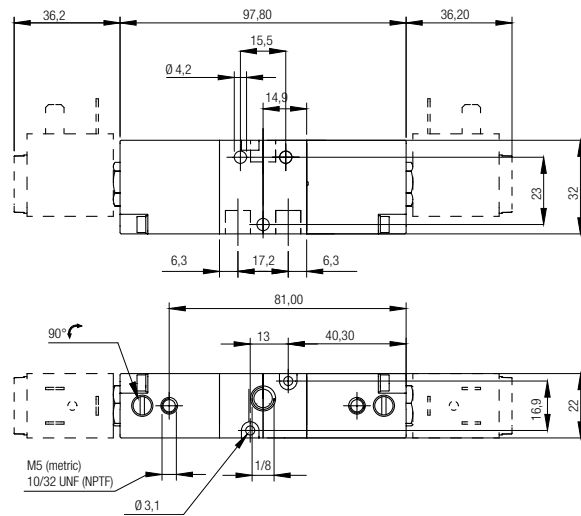
**DOUBLE SOLENOID EXTERNAL PILOT**



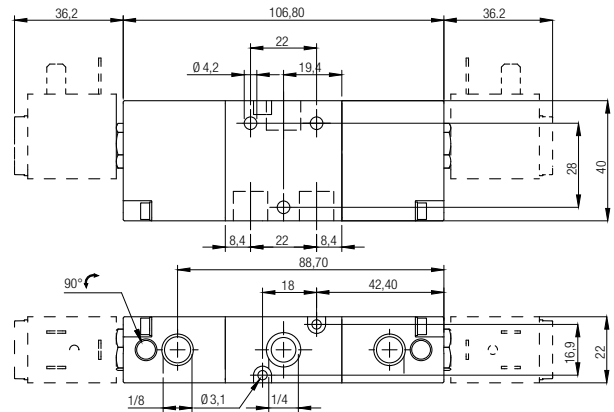
Part No.	Function	Size	Pack.
01V A1 3 00 02	3/2	G 1/8	1
01V A1 3 00 03	3/2	G 1/4	1

Part No.	Function	Size	Pack.
01V A1 3 00 02 N	3/2	NPTF 1/8	1
01V A1 3 00 03 N	3/2	NPTF 1/4	1

**G 1/8 - NPTF 1/8**

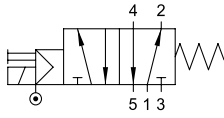


**G 1/4 - NPTF 1/4**



**5/2**

**SINGLE SOLENOID EXTERNAL PILOT - SPRING RETURN**

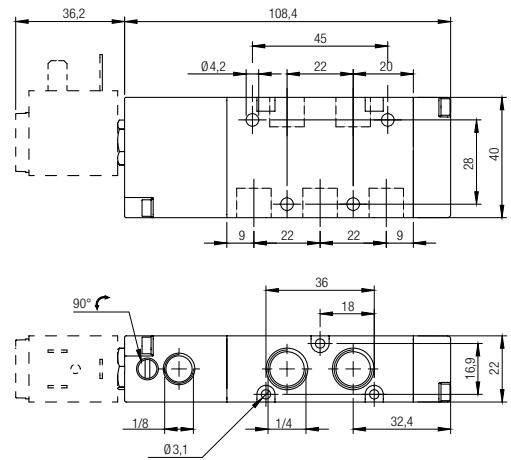
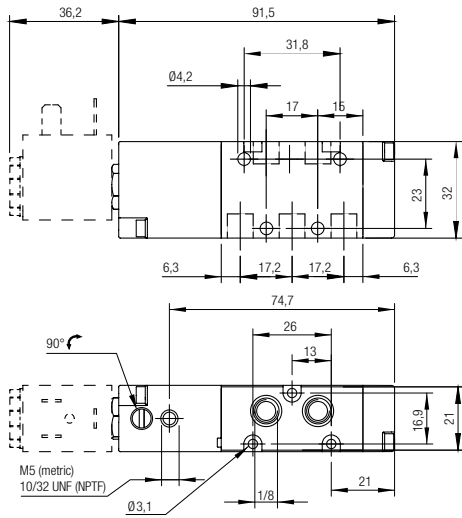


Part No.	Function	Size	Pack.
<b>01V A0 5 00 02</b>	5/2	G 1/8	1
<b>01V A0 5 00 03</b>	5/2	G 1/4	1

Part No.	Function	Size	Pack.
<b>01V A0 5 00 02 N</b>	5/2	NPTF 1/8	1
<b>01V A0 5 00 03 N</b>	5/2	NPTF 1/4	1

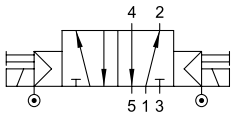
**G 1/8 - NPTF 1/8**

**G 1/4 - NPTF 1/4**



**5/2**

**DOUBLE SOLENOID EXTERNAL PILOT**

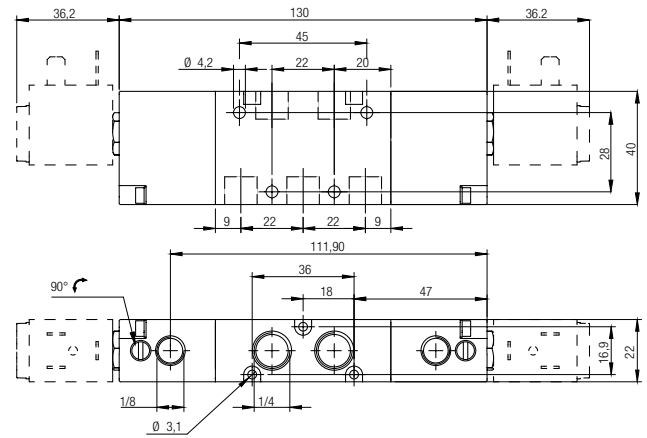
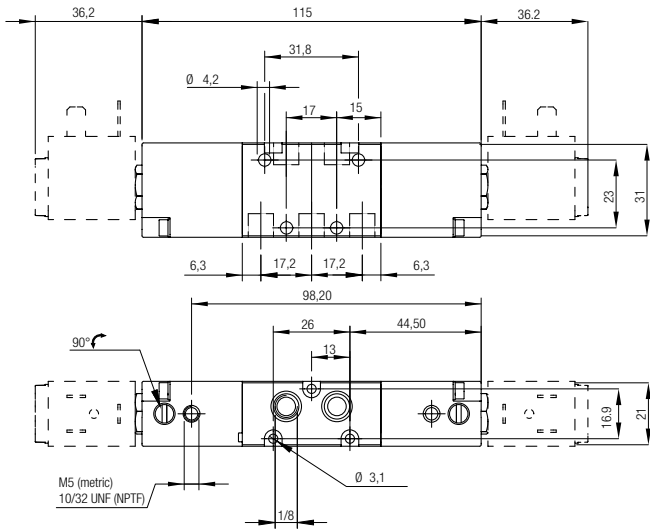


Part No.	Function	Size	Pack.
01V A1 5 00 02	5/2	G 1/8	1
01V A1 5 00 03	5/2	G 1/4	1

Part No.	Function	Size	Pack.
01V A1 5 00 02 N	5/2	NPTF 1/8	1
01V A1 5 00 03 N	5/2	NPTF 1/4	1

**G 1/8 - NPTF 1/8**

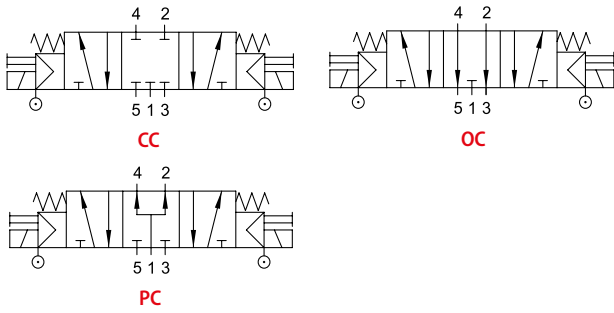
**G 1/4 - NPTF 1/4**





**5/3**

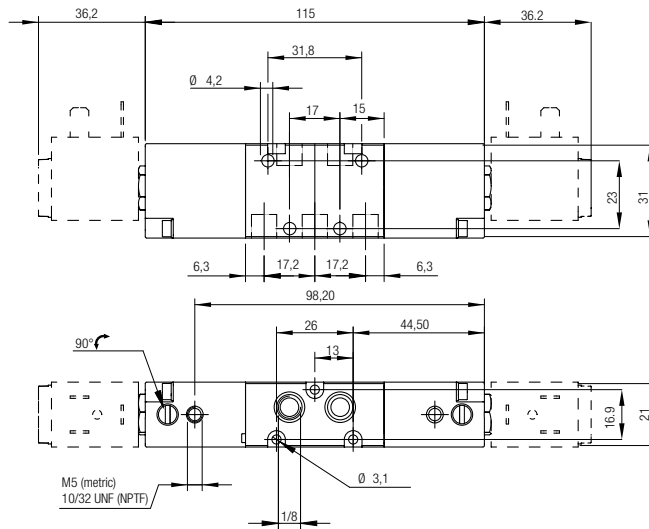
**DOUBLE SOLENOID EXTERNAL PILOT - SPRING CENTERED**



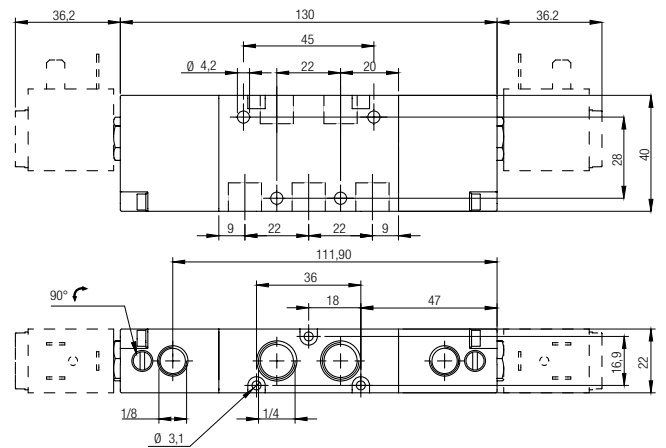
Part No.	Function	Size	Pack.
<b>01V A0 7 CC 02</b>	5/3 <b>CC</b>	G 1/8	1
<b>01V A0 7 CC 03</b>	5/3 <b>CC</b>	G 1/4	1
<b>01V A0 7 OC 02</b>	5/3 <b>OC</b>	G 1/8	1
<b>01V A0 7 OC 03</b>	5/3 <b>OC</b>	G 1/4	1
<b>01V A0 7 PC 02</b>	5/3 <b>PC</b>	G 1/8	1
<b>01V A0 7 PC 03</b>	5/3 <b>PC</b>	G 1/4	1

Part No.	Function	Size	Pack.
<b>01V A0 7 CC 02 N</b>	5/3 <b>CC</b>	NPTF 1/8	1
<b>01V A0 7 CC 03 N</b>	5/3 <b>CC</b>	NPTF 1/4	1
<b>01V A0 7 OC 02 N</b>	5/3 <b>OC</b>	NPTF 1/8	1
<b>01V A0 7 OC 03 N</b>	5/3 <b>OC</b>	NPTF 1/4	1
<b>01V A0 7 PC 02 N</b>	5/3 <b>PC</b>	NPTF 1/8	1
<b>01V A0 7 PC 03 N</b>	5/3 <b>PC</b>	NPTF 1/4	1

**G 1/8 - NPTF 1/8**



**G 1/4 - NPTF 1/4**



**EXTERNALLY PILOTED SOLENOID VALVES**

**AI316L**



**TECHNICAL CHARACTERISTICS**



**Reference Standard**

1907/2006  
**REACH** ✓

2011/65/CE  
**RoHS** ✓

PED  
2014/68/UE



**Component Parts and Materials**

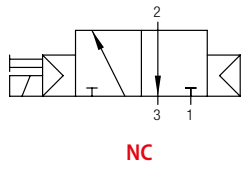
- Stainless Steel 316 L (1.4404) body
- Stainless Steel 316 L (1.4404) spool
- PUR seals and FKM O-Ring

		1/4	1/2
	THREADED	G 1/4 NPTF 1/4	G 1/2 NPTF 1/2
	6 bar FLOW RATE with Δp 1 bar	1250 NI/ min	3000 NI/min
	TEMPERATURE	min	-50 °C -58 °F
		max	+50 °C 122 °F
	SOLENOID VOLTAGE	24V DC - 12V DC - 24V AC 110V AC - 220V AC	
	MINIMUM POWER	3W - 5VA	
	MANUAL CONTROL	BISTABLE	
	TORQUE OF TIGHTENING THE NUT SOLENOID	0.6 Nm	

Series	Actuation	Reactuation	Ways	Function	Size	Thread
<b>X 1 V</b>	<b>S</b> S = Solenoid	<b>0</b> 0 = Monostable spring return 1 = Bistable 4 = Monostable pneumatic return	<b>3</b> 3 = 3/2 5 = 5/2	<b>N C</b> NC = Normally closed 00 = Function not provided	<b>0 3</b> 02 = 1/8 03 = 1/4	 = G N = NPTF

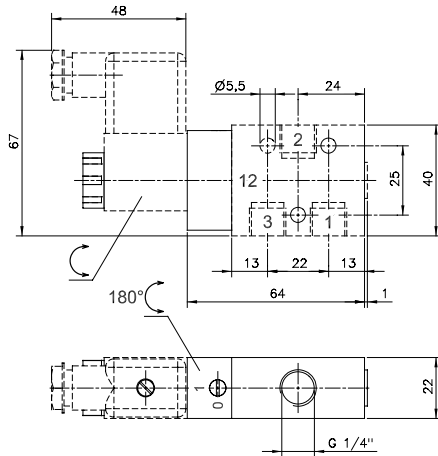
**3/2 Vie** - Ways - Wege - Voies - Vías - Vias

MONOSTABLE PNEUMATIC RETURN

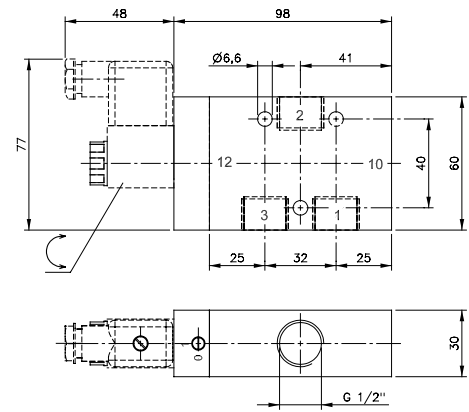


Part No.	Function	Working pressure	Size	Pack.
<b>X1V S4 3 NC 03</b>	3/2 <b>NC</b>	2÷10 bar	1/4	1
<b>X1V S4 3 NC 05</b>	3/2 <b>NC</b>	1÷10 bar	1/2	1

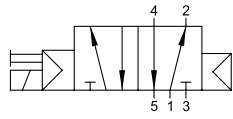
**X1V S4 3 NC 03**



**X1V S4 3 NC 05**

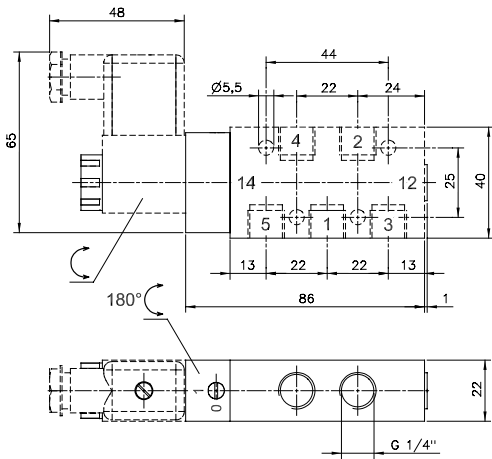


**5/2 Vie** - Ways - Wege - Voies - Vías - Vias  
**MONOSTABLE PNEUMATIC RETURN**

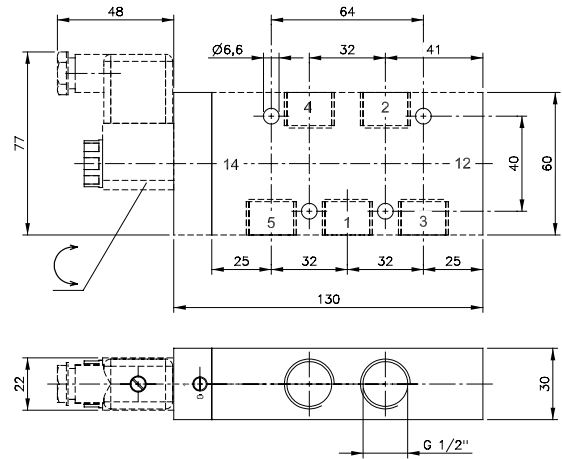


Part No.	Function	Working pressure	Size	Pack.
<b>X1V S4 5 00 03</b>	5/2	2÷10 bar	1/4	1
<b>X1V S4 5 00 05</b>	5/2	2÷10 bar	1/2	1

**X1V S4 5 00 03**

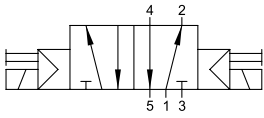


**X1V S4 5 00 05**



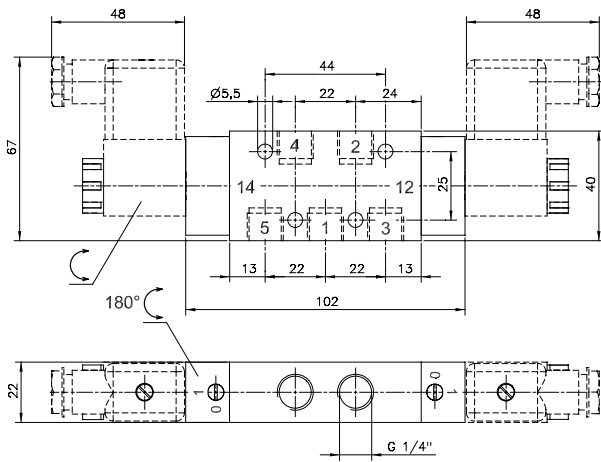
**5/2 Vie** - Ways - Wege - Voies - Vías - Vias

TWO STABLE POSITIONS

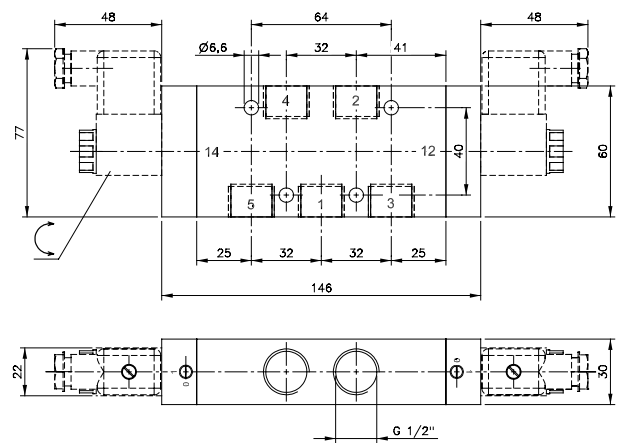


Part No.	Function	Working pressure	Size	Pack.
<b>X1V S1 5 00 03</b>	5/2	2÷10 bar	1/4	1
<b>X1V S1 5 00 05</b>	5/2	1÷10 bar	1/2	1

**X1V S1 5 00 03**



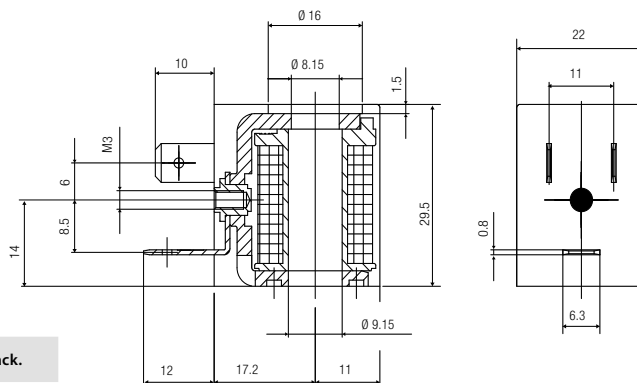
**X1V S1 5 00 05**





**SOLENOIDS AND CONNECTORS**

**Solenoid 22 mm**

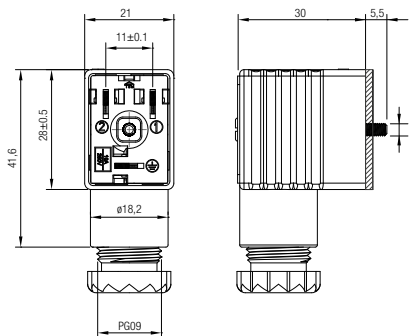


Part No.	Solenoid Voltage	Power	Pack.
SOL01 012 C 1 000	12V DC	3W	1
SOL01 024 C 1 000	24V DC	3W	1
* SOL01 024 C 3 000	24V DC	2W	1
SOL01 024 A 2 000	24V AC	5VA	1
SOL01 110 A 2 000	110V AC	5VA	1
SOL01 220 A 2 000	220V AC	5VA	1

\* Solenoid Recommended (ECO-FRIENDLY), only for 01V - 07V - 08V.

VOLTAGE TOLERANCE	±10 %	CLASS OF ISOLATION	F CEI EN 60085	DUTY RATE (ED)	100 %
DEGREE OF PROTECTION	IP65 IEC 60529 with connector	TERMINALS	INDUSTRIAL AMP		

**Connectors 22 mm**



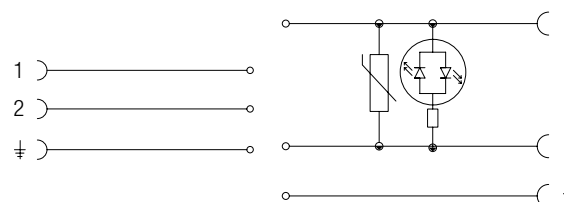
Part No.	Color	Characteristics	Pack.
CON01 000 01	■	STANDARD 2 PIN	1
CON02 024 00	□	LED + VDR 0 - 24V	1
CON02 110 00	□	LED + VDR 110V	1
CON02 250 00	□	LED + VDR 220V	1

■ Black      □ Transparent

VDR: Fitted with varistors as surge protection device.



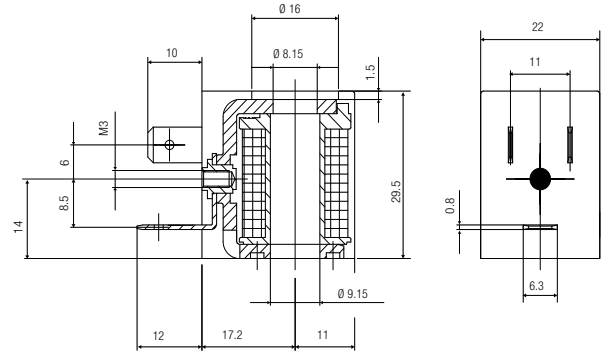
**Wiring**



CON01 000 01	CON02 024 00 CON02 110 00 CON02 250 00
--------------	--

DEGREE OF PROTECTION	IP65 IEC 60529	CABLE DIAMETER	6 ÷ 8 mm	TERMINALS	INDUSTRIAL AMP
----------------------	----------------	----------------	----------	-----------	----------------

## Solenoid 22 mm UL1446 CAN/CSA C22.2

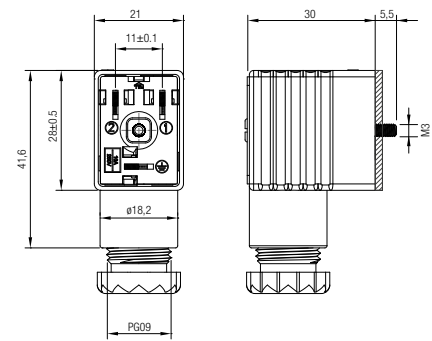


Part No.	Voltage	Power	Size	Pack.
SOLU1 012 C 1 000	12V DC	3W	22	1
* SOLU1 024 C 3 000	24V DC	2W	22	1
SOLU1 024 A 2 000	24V AC	5VA	22	1
SOLU1 110 A 2 000	110V AC	5VA	22	1
SOLU1 220 A 2 000	220V AC	5VA	22	1

\* Solenoid Recommended (ECO-FRIENDLY), only for 01V - 07V - 08V.

VOLTAGE TOLERANCE	±10 %	CLASS OF ISOLATION	H CEI EN 60085	DUTY RATE (ED)	100 %
DEGREE OF PROTECTION	IP65 IEC 60529 with connector	TERMINALS	INDUSTRIAL AMP		

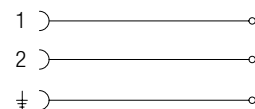
## Connectors 22 mm EN 175301-803 A/ISO 4400 - UL/CSA APPROVED



Part No.	Characteristics	Pack.
CONU1 000 01	STANDARD 2 PIN	1



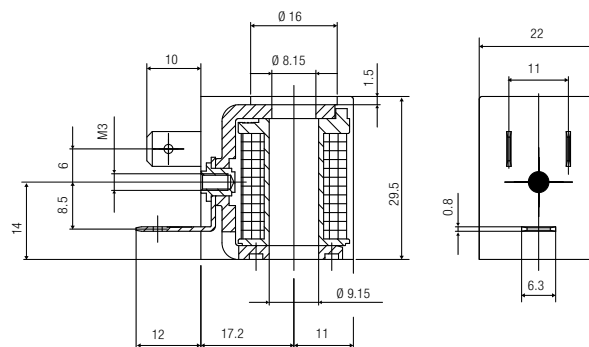
Wiring



CONU1 000 01

DEGREE OF PROTECTION	IP65 IEC 60529	CABLE DIAMETER	6 ÷ 8 mm	TERMINALS	INDUSTRIAL AMP
----------------------	----------------	----------------	----------	-----------	----------------

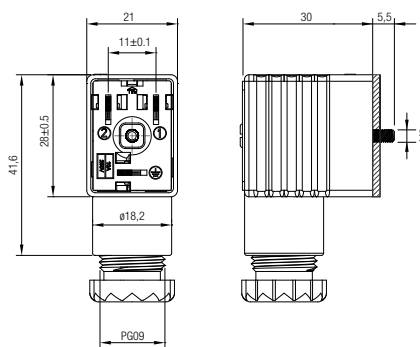
## Solenoid 22 mm ATEX - II 3G Ex nA IIC T5 Gc | II 3D Ex tc IIIC 95°C Dc



Part No.	Voltage	Power	Size	Pack.
<b>SOLX1 012 C 1 000</b>	12V DC	3W	22	1
<b>SOLX1 024 C 1 000</b>	24V DC	3W	22	1
<b>SOLX1 024 A 2 000</b>	24V AC	5VA	22	1

VOLTAGE TOLERANCE	±10 %	DEGREE OF PROTECTION	IP65 IEC 60529 with connector	DUTY RATE (ED)	100 %
TERMINALS	INDUSTRIAL AMP				

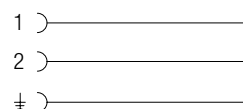
## Connectors 22 mm ATEX - II 2G Ex e IIC T6 Gb | II 2D Ex tb IIIC T85°C Db



Part No.	Color	Characteristics	Pack.
<b>CONX1 000 01</b>	■	2 POLI - Pins - Pins - Broches - Pins - Pinos	1



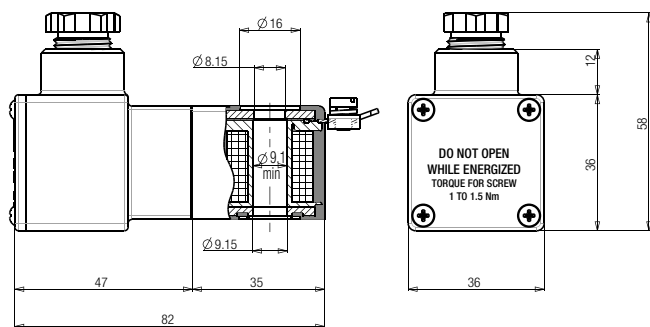
Wiring



CONX1 000 01

DEGREE OF PROTECTION	IP65 IEC 60529	CABLE DIAMETER	6 ÷ 8 mm	TERMINALS	INDUSTRIAL AMP
----------------------	----------------	----------------	----------	-----------	----------------

## Solenoid 30 mm ATEX II2G EX DMD IIC T5 GB



Part No.	Voltage	Power	Size	Pack.
<b>SOLX2 012 C 1 000</b>	12V DC	3W	30	5
<b>SOLX2 024 C 1 000</b>	24V DC	3W	30	5
<b>SOLX2 024 A 2 000</b>	24V AC	4.8VA	30	5
<b>SOLX2 110 A 2 000</b>	110V AC	4.8VA	30	5
<b>SOLX2 220 A 2 000</b>	220V AC	4.8VA	30	5

VOLTAGE TOLERANCE

±10 %

DEGREE OF PROTECTION

IP66 IEC 60529  
with connector

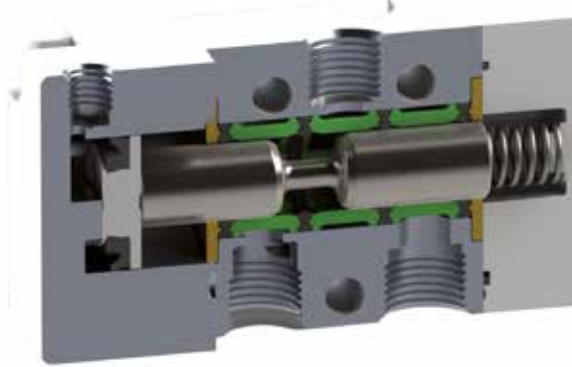
DUTY RATE (ED)

100 %

**AIR PILOT VALVES**



**TECHNICAL CHARACTERISTICS**



**Reference Standard**

- 1907/2006  
**REACH** ✓
- 2011/65/CE  
**RoHS** ✓
- PED  
2014/68/UE
- ATEX  
2014/34/UE



**Component Parts and Materials**

- Anodised and painted aluminium body
- Chemical nickel-plated spool
- NBR seals

		1/8	1/4	3/8	1/2
	THREADED	G 1/8 NPTF 1/8	G 1/4 NPTF 1/4	G 3/8 NPTF 3/8	G 1/2 NPTF 1/2
	6 bar FLOW RATE with Δp 1 bar	740 NI/min	1200 NI/min	2000 NI/min	5000 NI/min
	OPERATING PRESSURE	0 ÷ 10 bar 0 ÷ 145 psi			
	PRESSURE DRIVE	Monostable	2 ÷ 10 bar 29 ÷ 145 psi		
		Bistable	1 ÷ 10 bar 14.5 ÷ 145 psi		
	TEMPERATURE	min	-10 °C 14 °F		
		max	+60 °C 140 °F		

**Series      Actuation      Reactuation      Function      Size      Thread**

**0 1 V**

**P**

P = Pneumatic

**0**

0 = Monostable  
spring return  
1 = Bistable

**3**

3 = 3/2  
5 = 5/2  
7 = 5/3

**N C**

NO = Normally open  
NC = Normally closed  
CC = All Ports Blocked  
OC = Cylinder Ports Open to Exhaust  
PC = Cylinder Ports Pressurized  
00 = Function not provided

**0 2**

02 = 1/8  
03 = 1/4  
04 = 3/8  
05 = 1/2

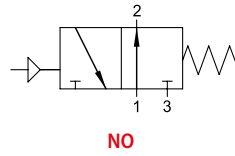
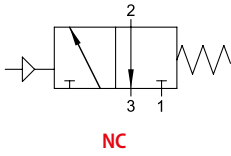
**□**

□ = G  
N = NPTF



**3/2**

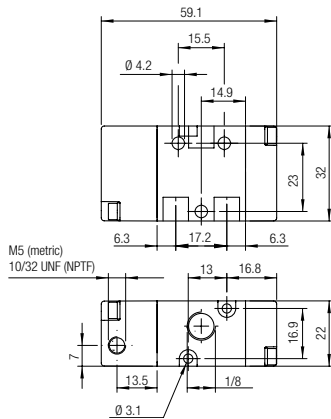
**SINGLE AIR PILOT - SPRING RETURN**



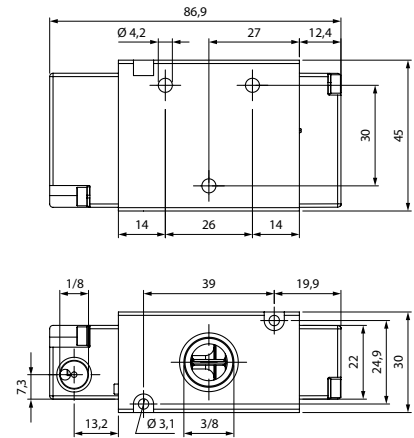
Part No.	Function	Size	Pack.
01V P0 3 NC 02	3/2 NC	G 1/8	1
01V P0 3 NC 03	3/2 NC	G 1/4	1
01V P0 3 NC 05	3/2 NC	G 1/2	1
01V P0 3 NO 02	3/2 NO	G 1/8	1
01V P0 3 NO 03	3/2 NO	G 1/4	1
01V P0 3 NO 05	3/2 NO	G 1/2	1

Part No.	Function	Size	Pack.
01V P0 3 NC 02 N	3/2 NC	NPTF 1/8	1
01V P0 3 NC 03 N	3/2 NC	NPTF 1/4	1
01V P0 3 NC 04 N	3/2 NC	NPTF 3/8	1
01V P0 3 NC 05 N	3/2 NC	NPTF 1/2	1
01V P0 3 NO 02 N	3/2 NO	NPTF 1/8	1
01V P0 3 NO 03 N	3/2 NO	NPTF 1/4	1
01V P0 3 NO 04 N	3/2 NO	NPTF 3/8	1
01V P0 3 NO 05 N	3/2 NO	NPTF 1/2	1

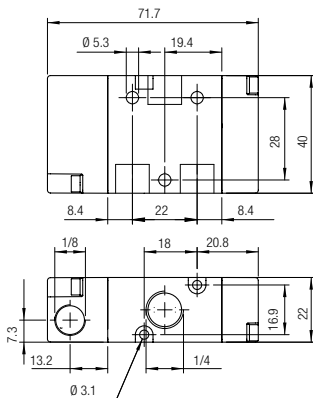
**G 1/8 - NPTF 1/8**



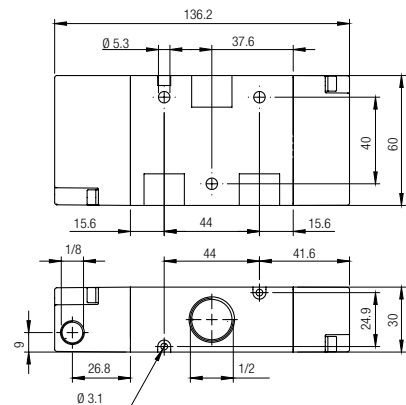
**NPTF 3/8**



**G 1/4 - NPTF 1/4**

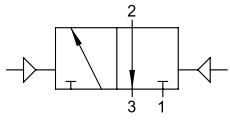


**G 1/2 - NPTF 1/2**



**3/2**

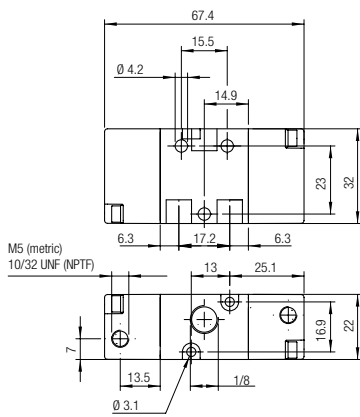
**DOUBLE AIR PILOT**



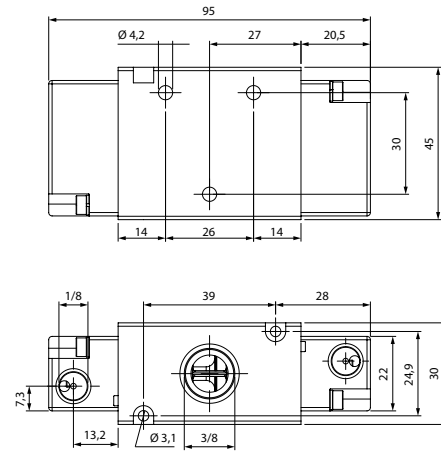
Part No.	Function	Size	Pack.
<b>01V P1 3 00 02</b>	3/2	G 1/8	1
<b>01V P1 3 00 03</b>	3/2	G 1/4	1
<b>01V P1 3 00 05</b>	3/2	G 1/2	1

Part No.	Function	Size	Pack.
<b>01V P1 3 00 02 N</b>	3/2	NPTF 1/8	1
<b>01V P1 3 00 03 N</b>	3/2	NPTF 1/4	1
<b>01V P1 3 00 04 N</b>	3/2	NPTF 3/8	1
<b>01V P1 3 00 05 N</b>	3/2	NPTF 1/2	1

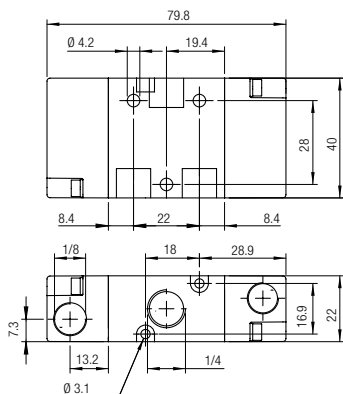
**G 1/8 - NPTF 1/8**



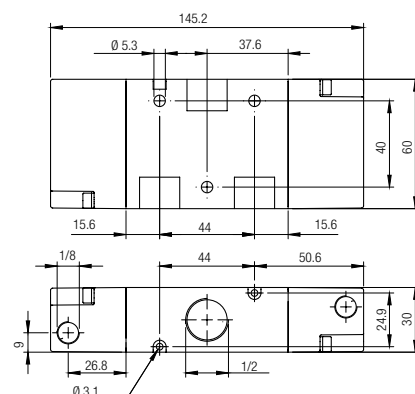
**NPTF 3/8**



**G 1/4 - NPTF 1/4**

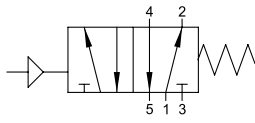


**G 1/2 - NPTF 1/2**



**5/2**

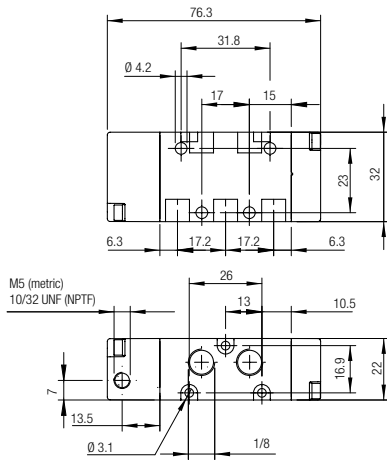
**SINGLE AIR PILOT - SPRING RETURN**



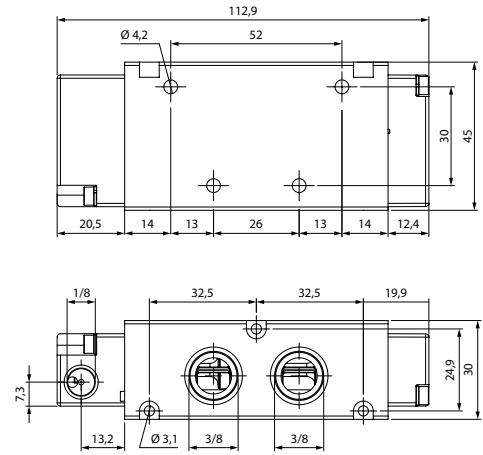
Part No.	Function	Size	Pack.
<b>01V P0 5 00 02</b>	5/2	G 1/8	1
<b>01V P0 5 00 03</b>	5/2	G 1/4	1
<b>01V P0 5 00 05</b>	5/2	G 1/2	1

Part No.	Function	Size	Pack.
<b>01V P0 5 00 02 N</b>	5/2	NPTF 1/8	1
<b>01V P0 5 00 03 N</b>	5/2	NPTF 1/4	1
<b>01V P0 5 00 04 N</b>	5/2	NPTF 3/8	1
<b>01V P0 5 00 05 N</b>	5/2	NPTF 1/2	1

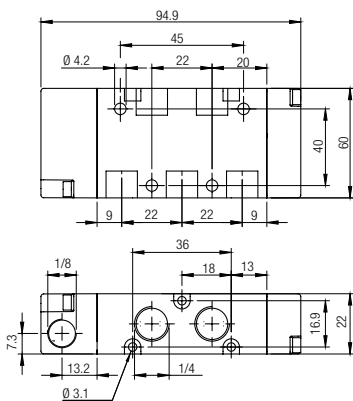
**G 1/8 - NPTF 1/8**



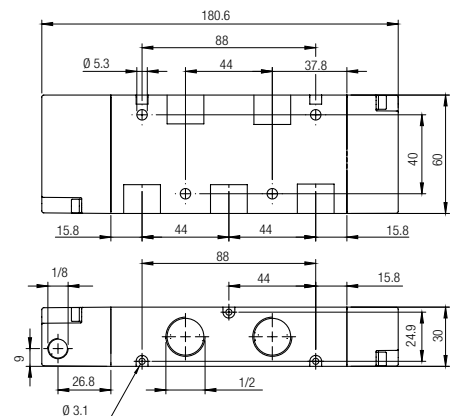
**NPTF 3/8**



**G 1/4 - NPTF 1/4**

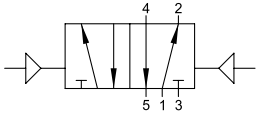


**G 1/2 - NPTF 1/2**



**5/2**

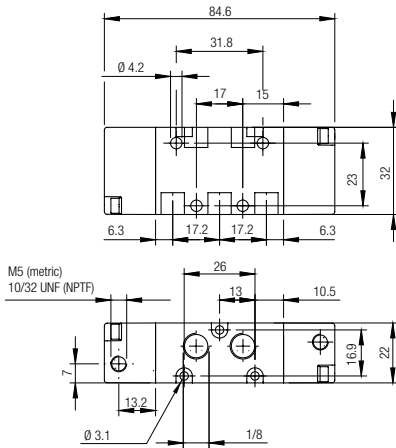
DOUBLE AIR PILOT



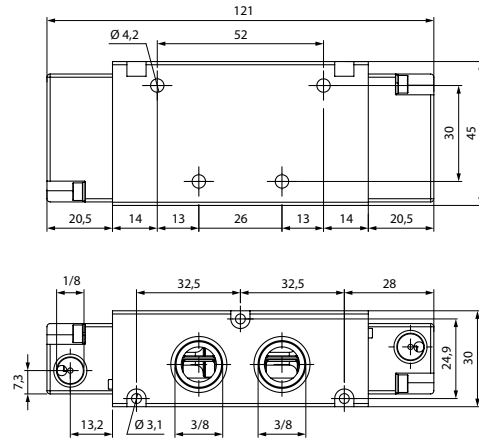
Part No.	Function	Size	Pack.
01V P1 5 00 02	5/2	G 1/8	1
01V P1 5 00 03	5/2	G 1/4	1
01V P1 5 00 05	5/2	G 1/2	1

Part No.	Function	Size	Pack.
01V P1 5 00 02 N	5/2	NPTF 1/8	1
01V P1 5 00 03 N	5/2	NPTF 1/4	1
01V P1 5 00 04 N	5/2	NPTF 3/8	1
01V P1 5 00 05 N	5/2	NPTF 1/2	1

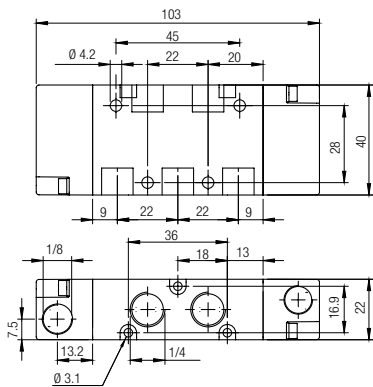
G 1/8 - NPTF 1/8



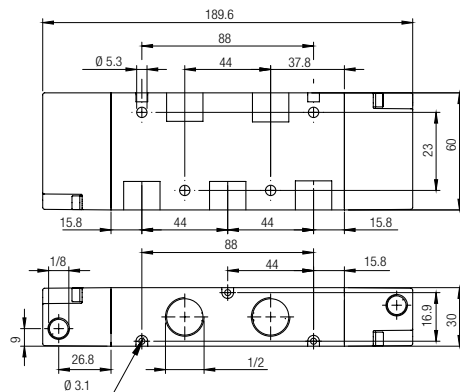
NPTF 3/8



G 1/4 - NPTF 1/4

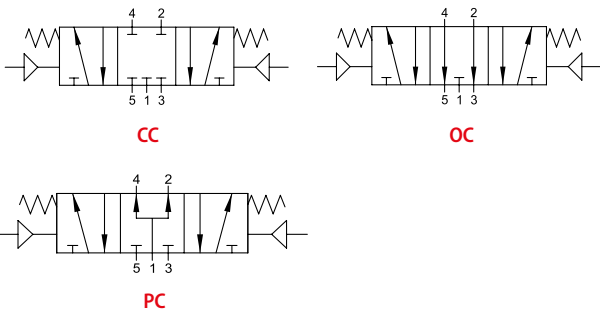


G 1/2 - NPTF 1/2



**5/3**

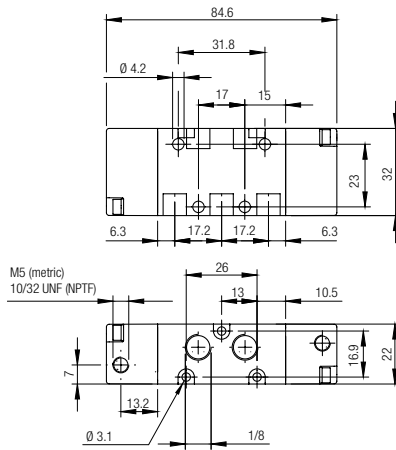
**DOUBLE AIR PILOT - SPRING RETURN**



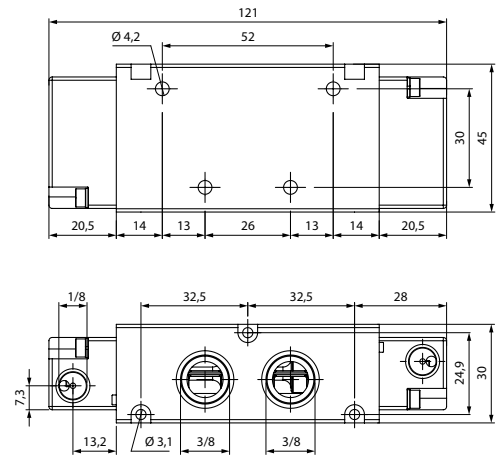
Part No.	Function	Size	Pack.
01V P0 7 CC 02	5/3 CC	G 1/8	1
01V P0 7 CC 03	5/3 CC	G 1/4	1
01V P0 7 CC 05	5/3 CC	G 1/2	1
01V P0 7 OC 02	5/3 OC	G 1/8	1
01V P0 7 OC 03	5/3 OC	G 1/4	1
01V P0 7 OC 05	5/3 OC	G 1/2	1
01V P0 7 PC 02	5/3 PC	G 1/8	1
01V P0 7 PC 03	5/3 PC	G 1/4	1
01V P0 7 PC 05	5/3 PC	G 1/2	1

Part No.	Function	Size	Pack.
01V P0 7 CC 02 N	5/3 CC	NPTF 1/8	1
01V P0 7 CC 03 N	5/3 CC	NPTF 1/4	1
01V P0 7 CC 04 N	5/3 CC	NPTF 3/8	1
01V P0 7 CC 05 N	5/3 CC	NPTF 1/2	1
01V P0 7 OC 02 N	5/3 OC	NPTF 1/8	1
01V P0 7 OC 03 N	5/3 OC	NPTF 1/4	1
01V P0 7 OC 04 N	5/3 OC	NPTF 3/8	1
01V P0 7 OC 05 N	5/3 OC	NPTF 1/2	1
01V P0 7 PC 02 N	5/3 PC	NPTF 1/8	1
01V P0 7 PC 03 N	5/3 PC	NPTF 1/4	1
01V P0 7 PC 04 N	5/3 PC	NPTF 3/8	1
01V P0 7 PC 05 N	5/3 PC	NPTF 1/2	1

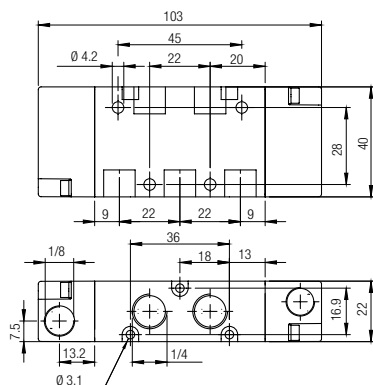
**G 1/8 - NPTF 1/8**



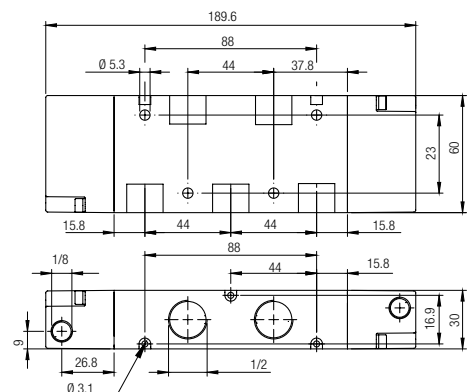
**NPTF 3/8**



**G 1/4 - NPTF 1/4**



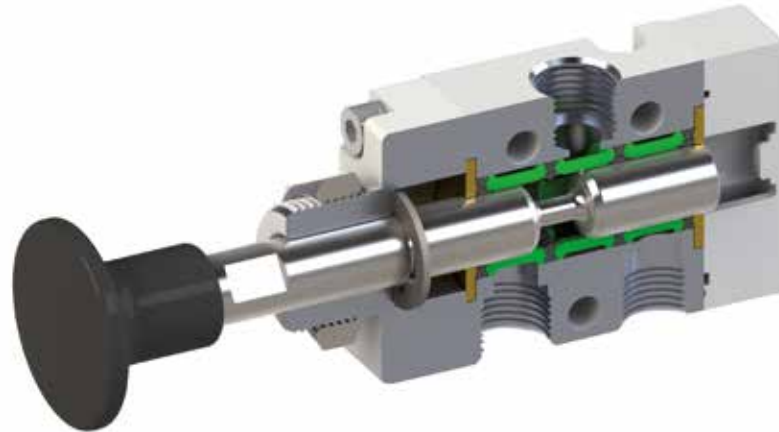
**G 1/2 - NPTF 1/2**



**MANUAL VALVES**



**TECHNICAL CHARACTERISTICS**



**Reference Standard**

1907/2006  
**REACH** ✓

2011/65/CE  
**RoHS** ✓

PED  
2014/68/UE

ATEX  
2014/34/UE



**Component Parts and Materials**

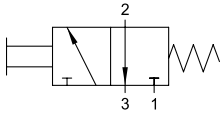
- Anodised and painted aluminium body
- Chemical nickel-plated spool
- NBR seals

	1/8	1/4
<b>THREADED</b>	G 1/8 NPTF 1/8	G 1/4 NPTF 1/4
<b>6 bar FLOW RATE with Δp 1 bar</b>	740 NI/min	1200 NI/min
<b>OPERATING PRESSURE</b>	Vacuum ÷ 10 bar Vacuum ÷ 145 psi	
<b>TEMPERATURE</b>	min	-10 °C 14 °F
	max	+60 °C 140 °F
<b>PANEL MOUNT</b>	M 16x1	

Series	Actuation	Reactuation	Function	Size	Thread
<b>0 1 V</b>	<b>T</b> T = Button L = 90° Lever	<b>0</b> 0 = Monostable spring return 1 = Bistable 2 = Stable in 3 positions	<b>3</b> 3 = 3/2 5 = 5/2 7 = 5/3	<b>0 2</b> 02 = 1/8 03 = 1/4	<b>□</b> = G N = NPTF
			<b>NO</b> = Normally open <b>NC</b> = Normally closed <b>CC</b> = All Ports Blocked <b>OC</b> = Cylinder Ports Open to Exhaust <b>PC</b> = Cylinder Ports Pressurized <b>00</b> = Function not provided		

**3/2**

**BUTTON OPERATED - SPRING RETURN**

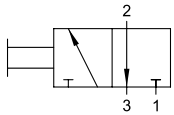


Part No.	Function	Size	Pack.
<b>01V T0 3 NC 02</b>	3/2 <b>NC</b>	G 1/8	1
<b>01V T0 3 NC 03</b>	3/2 <b>NC</b>	G 1/4	1

Part No.	Function	Size	Pack.
<b>01V T0 3 NC 02 N</b>	3/2 <b>NC</b>	NPTF 1/8	1
<b>01V T0 3 NC 03 N</b>	3/2 <b>NC</b>	NPTF 1/4	1

**3/2**

**BUTTON OPERATED - PUSH / PULL**



Part No.	Function	Size	Pack.
<b>01V T1 3 00 02</b>	3/2	G 1/8	1
<b>01V T1 3 00 03</b>	3/2	G 1/4	1

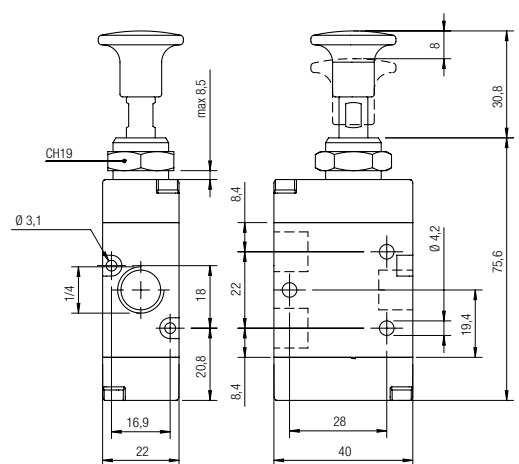
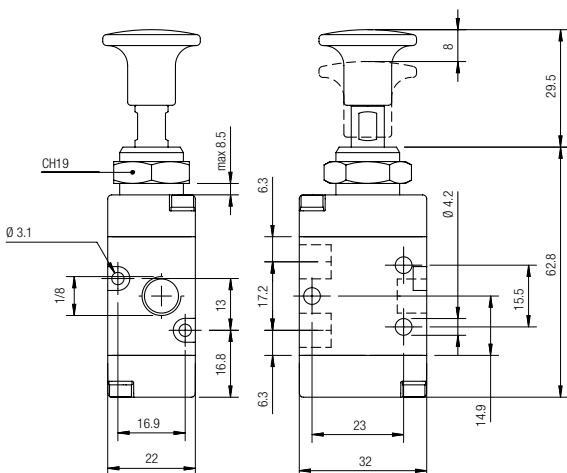
Part No.	Function	Size	Pack.
<b>01V T1 3 00 02 N</b>	3/2	NPTF 1/8	1
<b>01V T1 3 00 03 N</b>	3/2	NPTF 1/4	1

**BUTTON OPERATED VALVES**



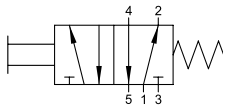
**G 1/8 - NPTF 1/8**

**G 1/4 - NPTF 1/4**



**5/2**

BUTTON OPERATED - SPRING RETURN



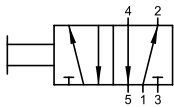
Part No.	Function	Size	Pack.
01V T0 5 00 02	5/2	G 1/8	1
01V T0 5 00 03	5/2	G 1/4	1

Part No.	Function	Size	Pack.
01V T0 5 00 02 N	5/2	NPTF 1/8	1
01V T0 5 00 03 N	5/2	NPTF 1/4	1



**5/2**

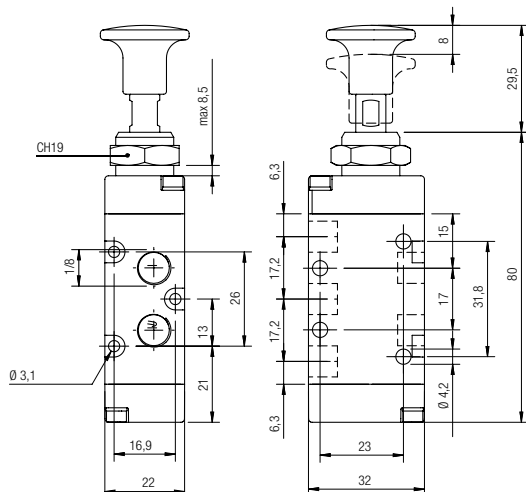
BUTTON OPERATED - PUSH / PULL



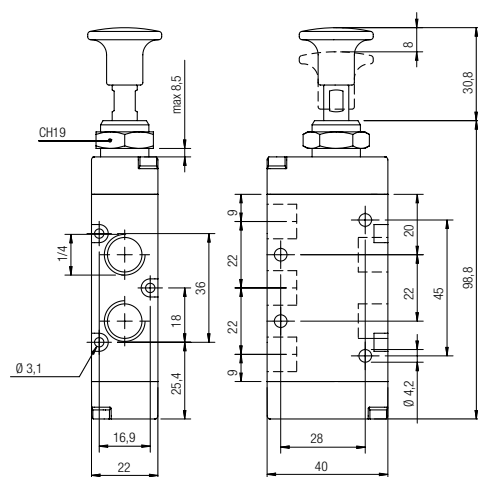
Part No.	Function	Size	Pack.
01V T1 5 00 02	5/2	G 1/8	1
01V T1 5 00 03	5/2	G 1/4	1

Part No.	Function	Size	Pack.
01V T1 5 00 02 N	5/2	NPTF 1/8	1
01V T1 5 00 03 N	5/2	NPTF 1/4	1

G 1/8 - NPTF 1/8



G 1/4 - NPTF 1/4

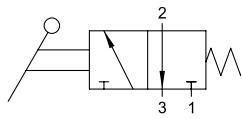




**3/2**

**LEVER OPERATED - SPRING RETURN**

**90° LEVER OPERATED VALVES**



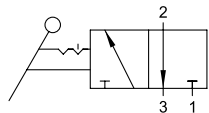
Part No.	Function	Size	Pack.
<b>01V L0 3 NC 02</b>	3/2 <b>NC</b>	G 1/8	1
<b>01V L0 3 NC 03</b>	3/2 <b>NC</b>	G 1/4	1

Part No.	Function	Size	Pack.
<b>01V L0 3 NC 02 N</b>	3/2 <b>NC</b>	NPTF 1/8	1
<b>01V L0 3 NC 03 N</b>	3/2 <b>NC</b>	NPTF 1/4	1



**3/2**

**LEVER OPERATED - PUSH / PULL**

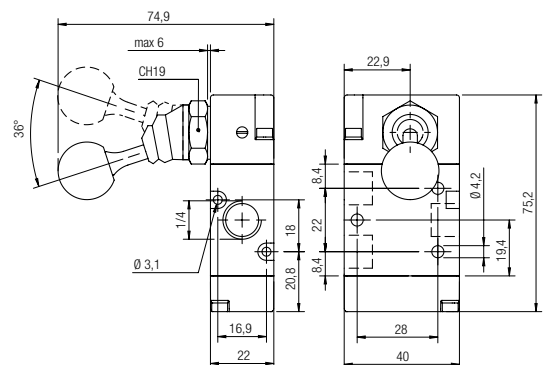
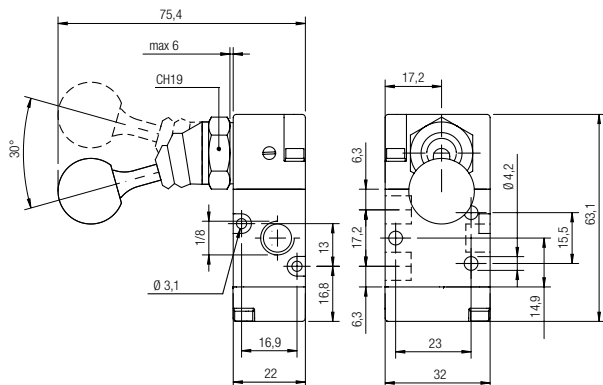


Part No.	Function	Size	Pack.
<b>01V L1 3 00 02</b>	3/2	G 1/8	1
<b>01V L1 3 00 03</b>	3/2	G 1/4	1

Part No.	Function	Size	Pack.
<b>01V L1 3 00 02 N</b>	3/2	NPTF 1/8	1
<b>01V L1 3 00 03 N</b>	3/2	NPTF 1/4	1

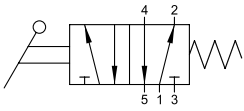
**G 1/8 - NPTF 1/8**

**G 1/4 - NPTF 1/4**



**5/2**

LEVER OPERATED - SPRING RETURN



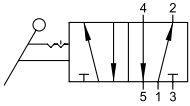
Part No.	Function	Size	Pack.
01V L0 5 00 02	5/2	G 1/8	1
01V L0 5 00 03	5/2	G 1/4	1

Part No.	Function	Size	Pack.
01V L0 5 00 02 N	5/2	NPTF 1/8	1
01V L0 5 00 03 N	5/2	NPTF 1/4	1



**5/2**

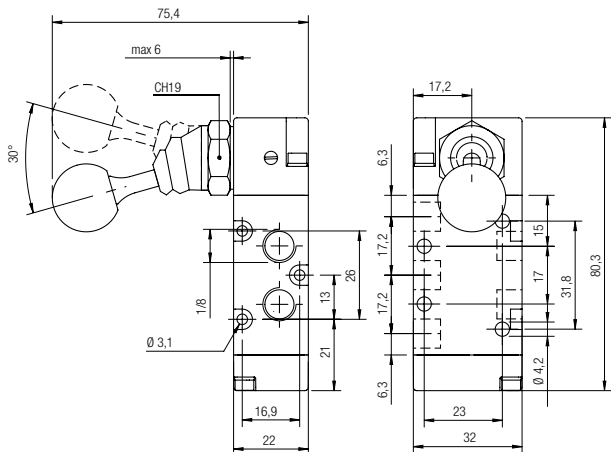
LEVER OPERATED - PUSH / PULL



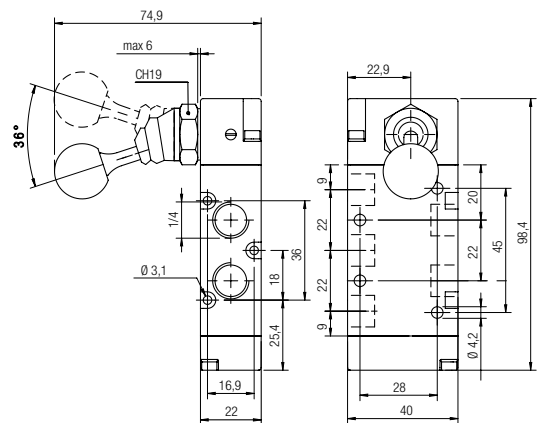
Part No.	Function	Size	Pack.
01V L1 5 00 02	5/2	G 1/8	1
01V L1 5 00 03	5/2	G 1/4	1

Part No.	Function	Size	Pack.
01V L1 5 00 02 N	5/2	NPTF 1/8	1
01V L1 5 00 03 N	5/2	NPTF 1/4	1

G 1/8 - NPTF 1/8

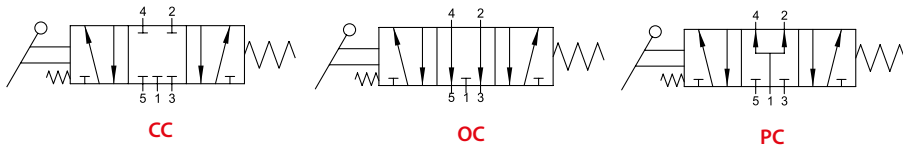


G 1/4 - NPTF 1/4



### 5/3

LEVER OPERATED - SPRING CENTERED



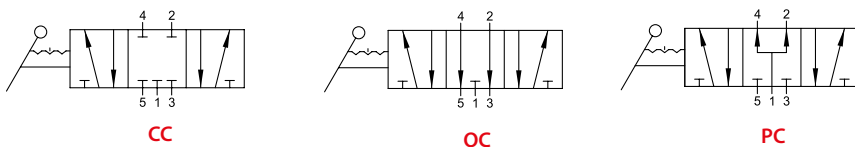
Part No.	Function	Size	Pack.
01V L0 7 CC 02	5/3 CC	G 1/8	1
01V L0 7 CC 03	5/3 CC	G 1/4	1
01V L0 7 OC 02	5/3 OC	G 1/8	1
01V L0 7 OC 03	5/3 OC	G 1/4	1
01V L0 7 PC 02	5/3 PC	G 1/8	1
01V L0 7 PC 03	5/3 PC	G 1/4	1

Part No.	Function	Size	Pack.
01V L0 7 CC 02 N	5/3 CC	NPTF 1/8	1
01V L0 7 CC 03 N	5/3 CC	NPTF 1/4	1
01V L0 7 OC 02 N	5/3 OC	NPTF 1/8	1
01V L0 7 OC 03 N	5/3 OC	NPTF 1/4	1
01V L0 7 PC 02 N	5/3 PC	NPTF 1/8	1
01V L0 7 PC 03 N	5/3 PC	NPTF 1/4	1



### 5/3

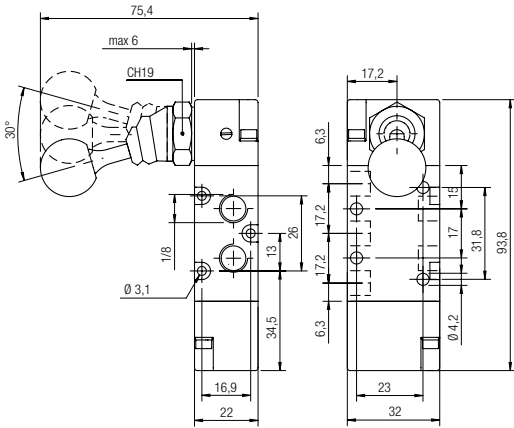
LEVER OPERATED - PUSH / PULL



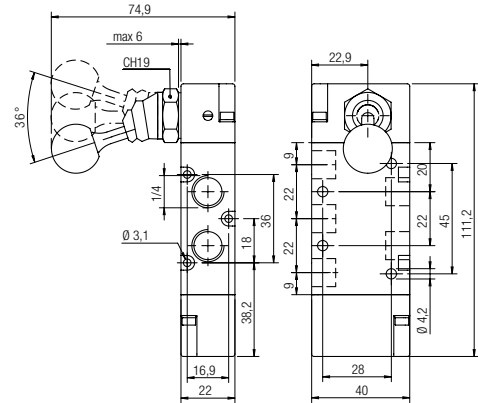
Part No.	Function	Size	Pack.
01V L2 7 CC 02	5/3 CC	G 1/8	1
01V L2 7 CC 03	5/3 CC	G 1/4	1
01V L2 7 OC 02	5/3 OC	G 1/8	1
01V L2 7 OC 03	5/3 OC	G 1/4	1
01V L2 7 PC 02	5/3 PC	G 1/8	1
01V L2 7 PC 03	5/3 PC	G 1/4	1

Part No.	Function	Size	Pack.
01V L2 7 CC 02 N	5/3 CC	NPTF 1/8	1
01V L2 7 CC 03 N	5/3 CC	NPTF 1/4	1
01V L2 7 OC 02 N	5/3 OC	NPTF 1/8	1
01V L2 7 OC 03 N	5/3 OC	NPTF 1/4	1
01V L2 7 PC 02 N	5/3 PC	NPTF 1/8	1
01V L2 7 PC 03 N	5/3 PC	NPTF 1/4	1

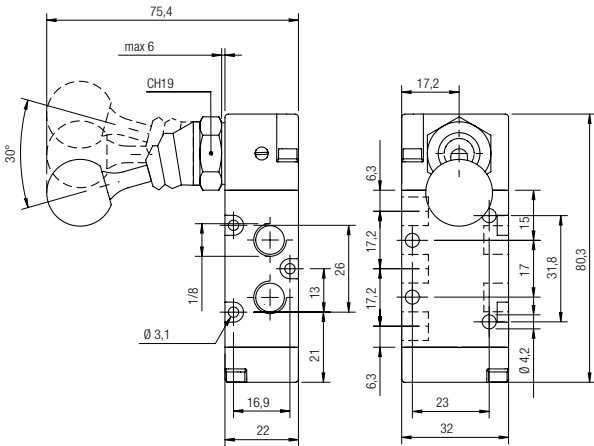
01V L0 7 CC 02 01V L0 7 OC 02 01V L0 7 PC 02  
 01V L0 7 CC 02 N 01V L0 7 OC 02 N 01V L0 7 PC 02 N



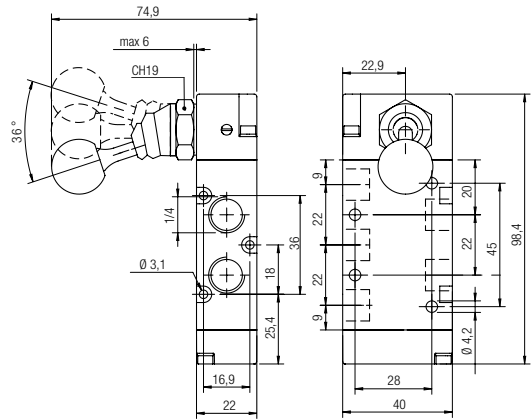
01V L0 7 CC 03 01V L0 7 OC 03 01V L0 7 PC 03  
 01V L0 7 CC 03 N 01V L0 7 OC 03 N 01V L0 7 PC 03 N



01V L2 7 CC 02 01V L2 7 OC 02 01V L2 7 PC 02  
 01V L2 7 CC 02 N 01V L2 7 OC 02 N 01V L2 7 PC 02 N



01V L2 7 CC 03 01V L2 7 OC 03 01V L2 7 PC 03  
 01V L2 7 CC 03 N 01V L2 7 OC 03 N 01V L2 7 PC 03 N



**STAINLESS STEEL AISI 316 L 90° LEVER VALVE**

**AISI 316L**



**TECHNICAL CHARACTERISTICS**



**Reference Standard**

1907/2006  
**REACH** ✓

2011/65/CE  
**RoHS** ✓

PED  
2014/68/UE



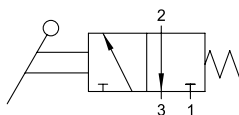
**Component Parts and Materials**

- Stainless Steel 316 L (1.4404) body
- Stainless Steel 316 L (1.4404) spool
- PUR seals and FKM O-Ring

		1/4
	THREADED	G 1/4 NPTF 1/4
	OPERATING PRESSURE	1 ÷ 10 bar
	ACTIVATION FORCE	20 N

**3/2 Ways**

MONOSTABLE SPRING RETURN

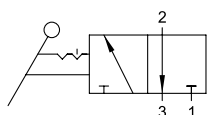


Part No.	Function	Size	Pack.
<b>X1V L0 3 NC 03</b>	3/2 <b>NC</b>	G 1/4	1



**3/2 Ways**

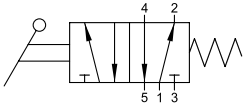
TWO STABLE POSITIONS



Part No.	Function	Size	Pack.
<b>X1V L1 3 NC 03</b>	3/2 <b>NC</b>	G 1/4	1

## 5/2 Ways

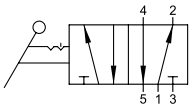
MONOSTABLE SPRING RETURN



Part No.	Function	Size	Pack.
<b>X1V L0 5 00 03</b>	5/2	G 1/4	1

## 5/2 Ways

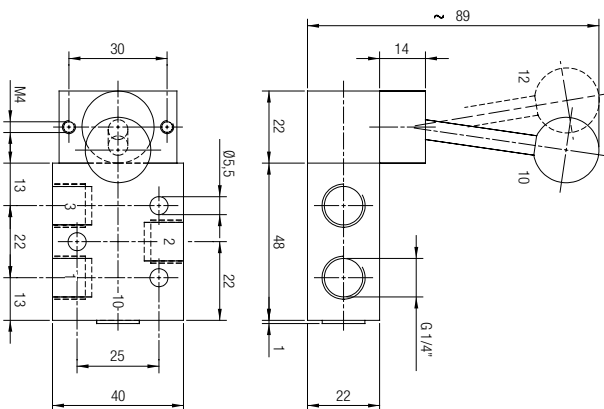
TWO STABLE POSITIONS



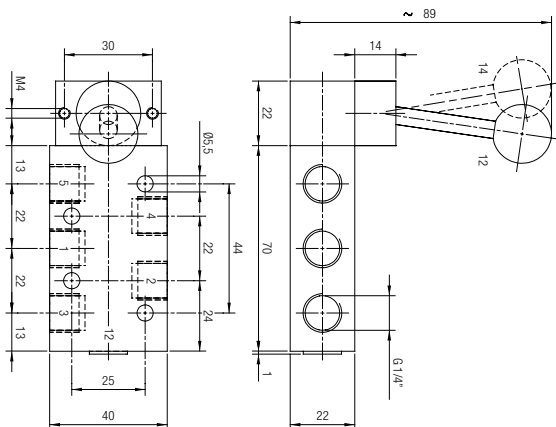
Part No.	Function	Size	Pack.
<b>X1V L1 5 00 03</b>	5/2	G 1/4	1



X1V L0 3 NC 03 X1V L1 3 00 03

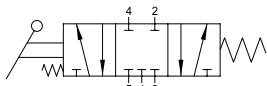


X1V L0 5 00 03 X1V L1 5 00 03

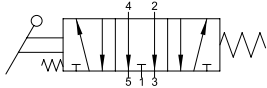


## 5/3 Ways

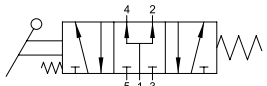
MONOSTABLE SPRING RETURN



CC



OC



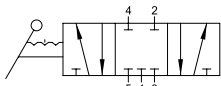
PC

Part No.	Function	Size	Pack.
X1V L0 7 CC 03	5/3 CC	G 1/4	1
X1V L0 7 OC 03	5/3 OC	G 1/4	1
X1V L0 7 PC 03	5/3 PC	G 1/4	1

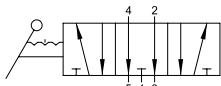


## 5/3 Ways

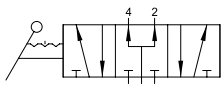
3 STABLE POSITIONS



CC



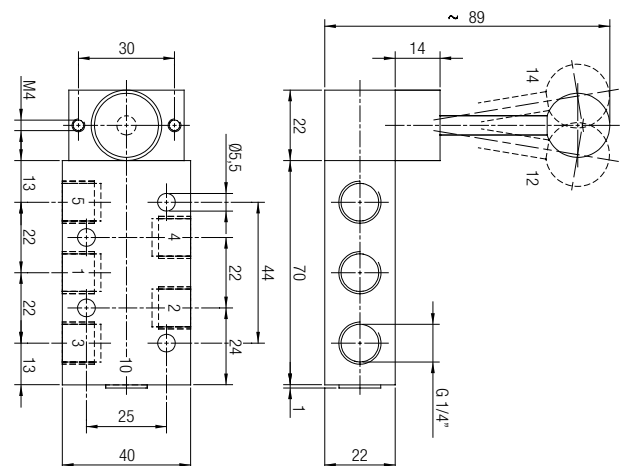
OC



PC

Part No.	Function	Size	Pack.
X1V L2 7 CC 03	5/3 CC	G 1/4	1
X1V L2 7 OC 03	5/3 OC	G 1/4	1
X1V L2 7 PC 03	5/3 PC	G 1/4	1

X1V L0 7 CC 03	X1V L0 7 OC 03	X1V L0 7 PC 03
X1V L2 7 CC 03	X1V L2 7 OC 03	X1V L2 7 PC 03



**MECHANICALLY ACTUATED / SPRING RETURN VALVES**



**TECHNICAL CHARACTERISTICS**



**Reference Standard**

- 1907/2006  
**REACH** ✓
- 2011/65/CE  
**RoHS** ✓
- PED  
2014/68/UE
- ATEX  
2014/34/UE



**Component Parts and Materials**

- Anodised and painted aluminium body
- Chemical nickel-plated spool
- NBR seals

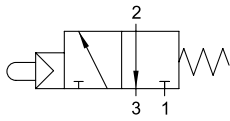
		1/8
	THREADED	G 1/8 NPTF 1/8
	6 bar FLOW RATE with Δp 1 bar	740 NI/min
	OPERATING PRESSURE	2 ÷ 10 bar 29 ÷ 145 psi
	DRIVING FORCE	5.8 N
	TEMPERATURE	min
		max
		-10 °C 14 °F
		+60 °C 14 °F

Series	Actuation	Reactuation	Function	Size	Thread
<b>0 1 V</b>	<b>V</b>	<b>0</b>	<b>3</b>	<b>0 2</b>	
	V = Servo-piloted tappet N = Servo-piloted Whisker	0 = Monostable spring return	3 = 3/2 5 = 5/2	02 = 1/8	= G N = NPTF
			NC = Normally closed 00 = Function not provided		



**3/2**

**SERVO-PILOTED TAPPET - SPRING RETURN**

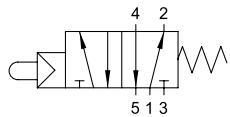


Part No.	Function	Size	Pack.
<b>01V V0 3 NC 02</b>	3/2 <b>NC</b>	G 1/8	1

Part No.	Function	Size	Pack.
<b>01V V0 3 NC 02 N</b>	3/2 <b>NC</b>	NPTF 1/8	1

**5/2**

**SERVO-PILOTED TAPPET - SPRING RETURN**



Part No.	Function	Size	Pack.
<b>01V V0 5 00 02</b>	5/2	G 1/8	1

Part No.	Function	Size	Pack.
<b>01V V0 5 00 02 N</b>	5/2	NPTF 1/8	1

**SERVO-PILOTED TAPPET VALVES - SPRING RETURN**

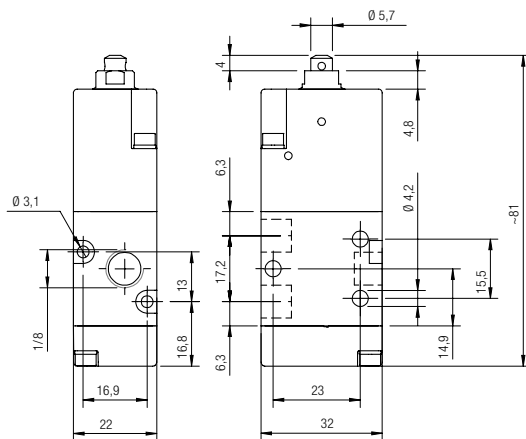


**04V 01 0 00 01**

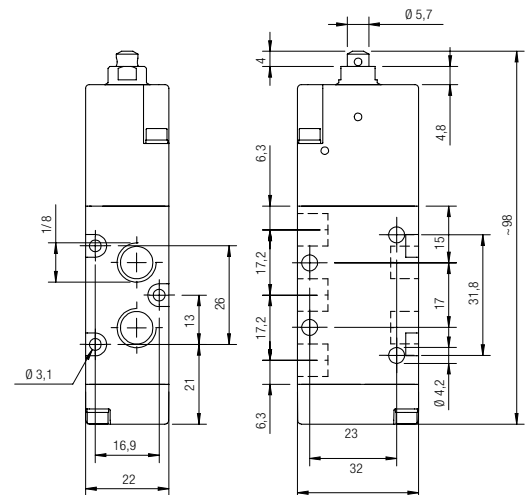
**04V 06 0 00 01**

The servo-piloted valve actuators are designed for panel mounting. For interfaces, refer to the buttons and switches in Series 04V Pg. 45.

**01V V0 3 NC 02 01V V0 3 NC 02 N**

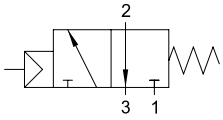


**01V V0 5 00 02 01V V0 5 00 02 N**



**3/2**

SERVO-PILOTED WHISKER - SPRING RETURN



Part No.	Function	Size	Pack.
01V N0 3 NC 02	3/2 NC	G 1/8	1

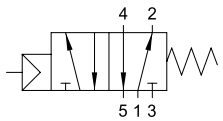
Part No.	Function	Size	Pack.
01V N0 3 NC 02 N	3/2 NC	NPTF 1/8	1

SERVO-PILOTED WHISKER - SPRING RETURN VALVES



**5/2**

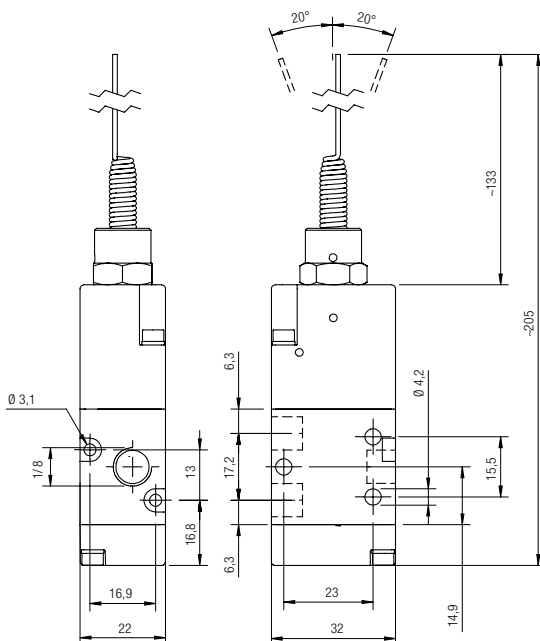
SERVO-PILOTED WHISKER - SPRING RETURN



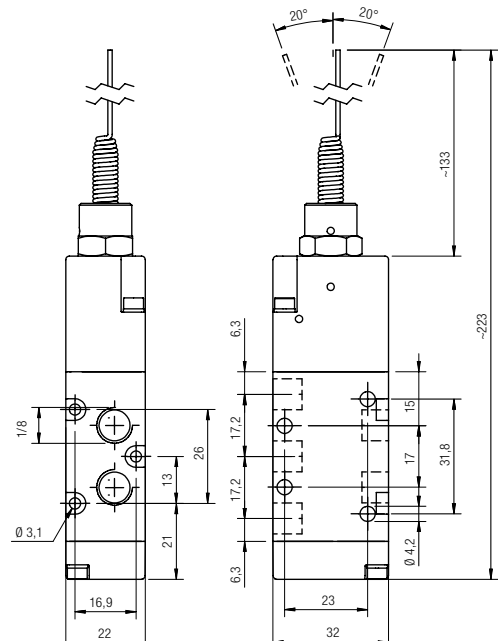
Part No.	Function	Size	Pack.
01V N0 5 00 02	5/2	G 1/8	1

Part No.	Function	Size	Pack.
01V N0 5 00 02 N	5/2	NPTF 1/8	1

01V N0 3 NC 02 01V N0 3 NC 02 N



01V N0 5 00 02 01V N0 5 00 02 N



**DIN RAIL MOUNTED FIXED LENGTH MANIFOLD BASES - NPTF**



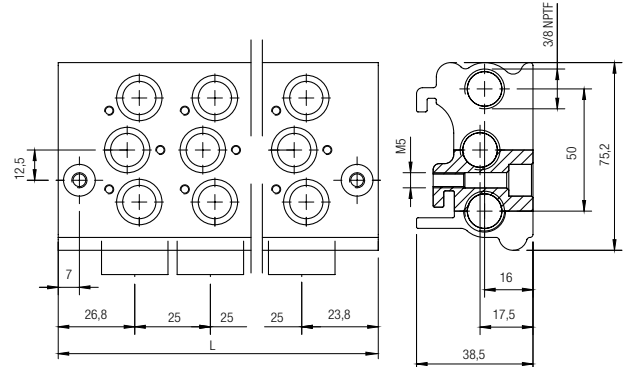
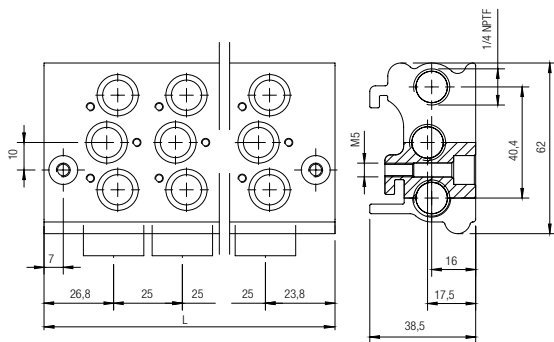
The bases are supplied with screws and O-Ring for attachment of the valves.

**MANIFOLD BASE FOR VALVES 01V - 1/8 NPTF**

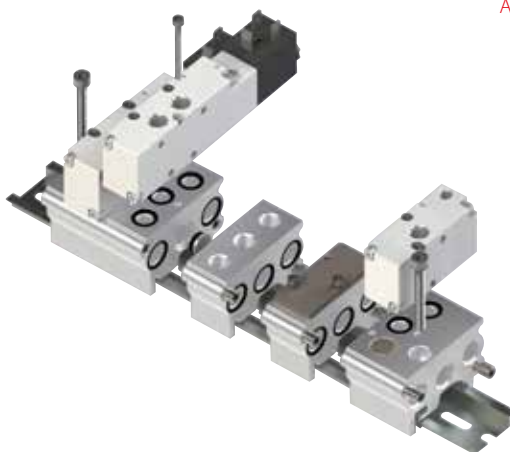
Part Number	Stations	L	Pack.
<b>01V B0 0 00 02 N</b>	2	76	1
<b>01V B0 0 00 03 N</b>	3	101	1
<b>01V B0 0 00 04 N</b>	4	126	1
<b>01V B0 0 00 05 N</b>	5	151	1
<b>01V B0 0 00 06 N</b>	6	176	1
<b>01V B0 0 00 07 N</b>	7	201	1
<b>01V B0 0 00 08 N</b>	8	226	1
<b>01V B0 0 00 09 N</b>	9	251	1
<b>01V B0 0 00 10 N</b>	10	276	1

**MANIFOLD BASE FOR VALVES 01V - 1/4 NPTF**

Part Number	Stations	L	Pack.
<b>01V B0 1 00 02 N</b>	2	76	1
<b>01V B0 1 00 03 N</b>	3	101	1
<b>01V B0 1 00 04 N</b>	4	126	1
<b>01V B0 1 00 05 N</b>	5	151	1
<b>01V B0 1 00 06 N</b>	6	176	1
<b>01V B0 1 00 07 N</b>	7	201	1
<b>01V B0 1 00 08 N</b>	8	226	1
<b>01V B0 1 00 09 N</b>	9	251	1
<b>01V B0 1 00 10 N</b>	10	276	1



**DIN RAIL MOUNTED MODULAR BASES**



All the bases are supplied with screws and seals to secure the correct assembly.

**FRONT MANIFOLD END PLATE**



Part Number	Size	Pack.
<b>01V B1 0 00 00 N</b>	1/8 NPTF	1
<b>01V B1 0 00 01 N</b>	1/4 NPTF	1

**REAR MANIFOLD END PLATE**



Part Number	Size	Pack.
<b>01V B2 0 00 00 N</b>	1/8 NPTF	1
<b>01V B2 0 00 01 N</b>	1/4 NPTF	1

**MODULAR BASE**



Part Number	Size	Pack.
<b>01V B3 0 00 00 N</b>	1/8 NPTF	1
<b>01V B3 0 00 01 N</b>	1/4 NPTF	1

**INTERMEDIATE PRESSURE BASE**



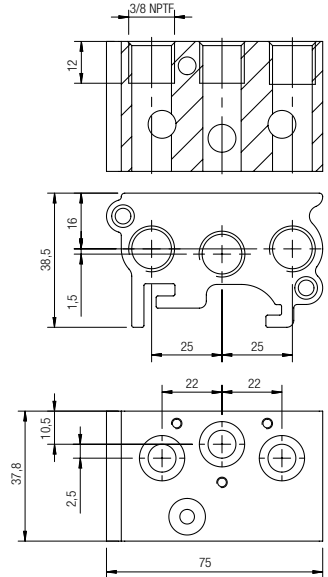
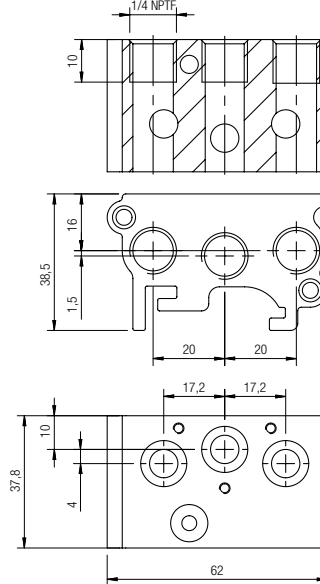
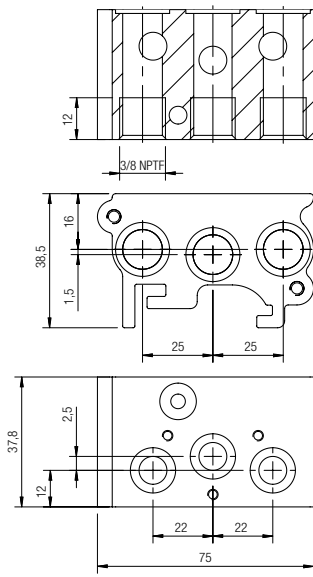
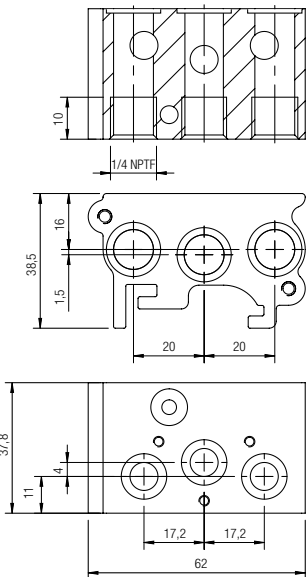
Part Number	Size	Pack.
<b>01V B4 0 00 00 N</b>	1/8 NPTF	1
<b>01V B4 0 00 01 N</b>	1/4 NPTF	1

**01V B1 0 00 00 N**

**01V B1 0 00 01 N**

**01V B2 0 00 00 N**

**01V B2 0 00 01 N**

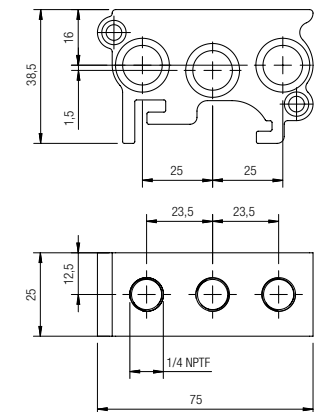
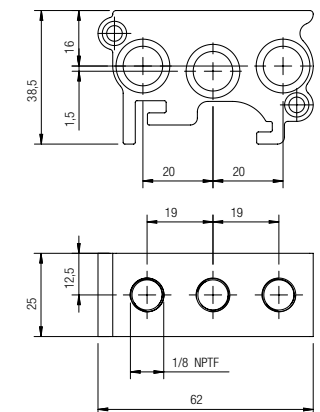
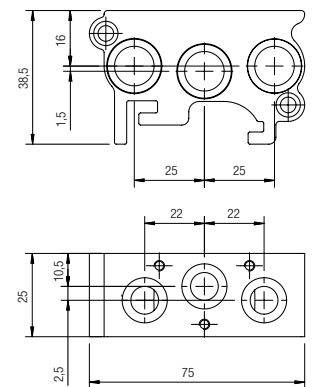
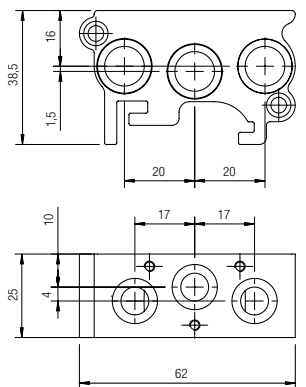


**01V B3 0 00 00 N**

**01V B3 0 00 01 N**

**01V B4 0 00 00 N**

**01V B4 0 00 01 N**



**DIN RAIL MOUNTED FIXED LENGTH MANIFOLD BASES**



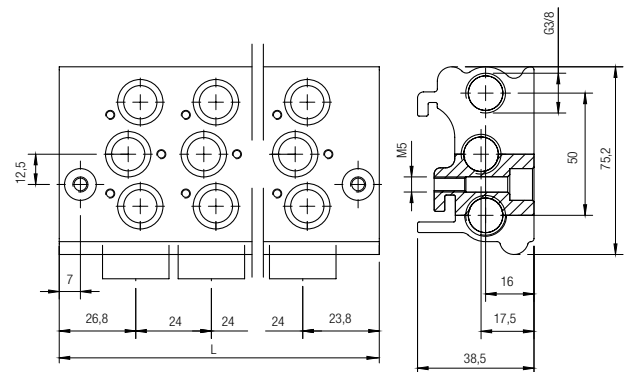
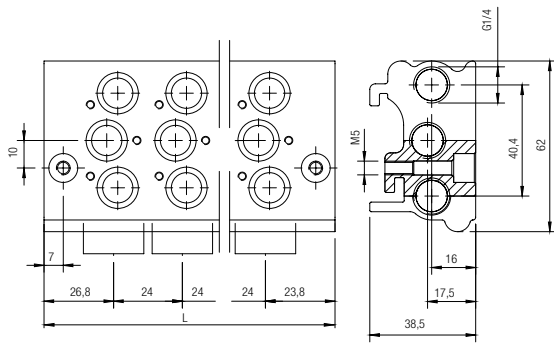
The bases are supplied with screws and O-Ring for attachment of the valves.

**MANIFOLD BASE FOR VALVES 01V - G1/8**

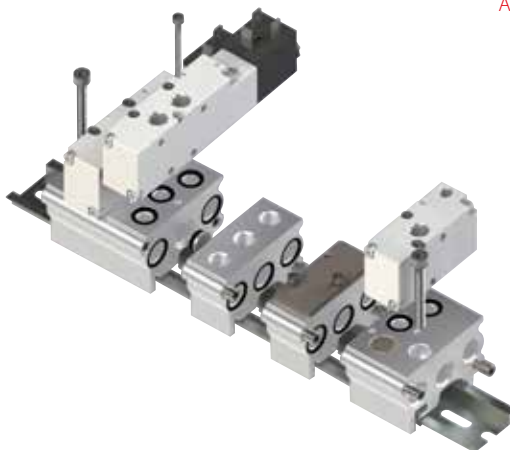
Part Number	Stations	L	Pack.
01V B0 0 00 02	2	75	1
01V B0 0 00 03	3	99	1
01V B0 0 00 04	4	123	1
01V B0 0 00 05	5	147	1
01V B0 0 00 06	6	171	1
01V B0 0 00 07	7	195	1
01V B0 0 00 08	8	219	1
01V B0 0 00 09	9	243	1
01V B0 0 00 10	10	267	1

**MANIFOLD BASE FOR VALVES 01V - G1/4**

Part Number	Stations	L	Pack.
01V B0 1 00 02	2	75	1
01V B0 1 00 03	3	99	1
01V B0 1 00 04	4	123	1
01V B0 1 00 05	5	147	1
01V B0 1 00 06	6	171	1
01V B0 1 00 07	7	195	1
01V B0 1 00 08	8	219	1
01V B0 1 00 09	9	243	1
01V B0 1 00 10	10	267	1



**DIN RAIL MOUNTED MODULAR BASES**



All the bases are supplied with screws and seals to secure the correct assembly.

**FRONT MANIFOLD END PLATE**



Part Number	Size	Pack.
<b>01V B1 0 00 00</b>	G 1/8	1
<b>01V B1 0 00 01</b>	G 1/4	1

**REAR MANIFOLD END PLATE**



Part Number	Size	Pack.
<b>01V B2 0 00 00</b>	G 1/8	1
<b>01V B2 0 00 01</b>	G 1/4	1

**MODULAR BASE**



Part Number	Size	Pack.
<b>01V B3 0 00 00</b>	G 1/8	1
<b>01V B3 0 00 01</b>	G 1/4	1

**INTERMEDIATE PRESSURE BASE**



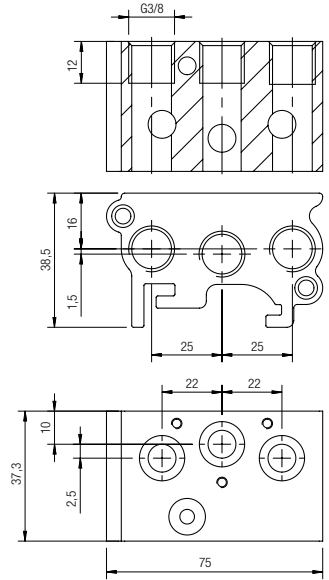
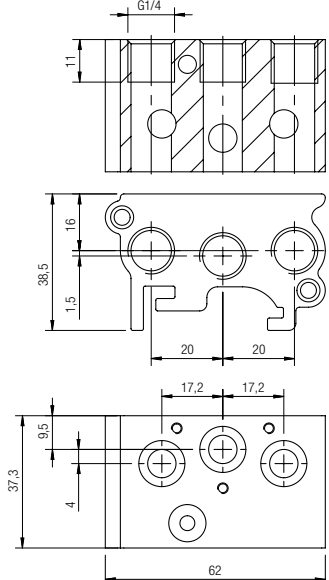
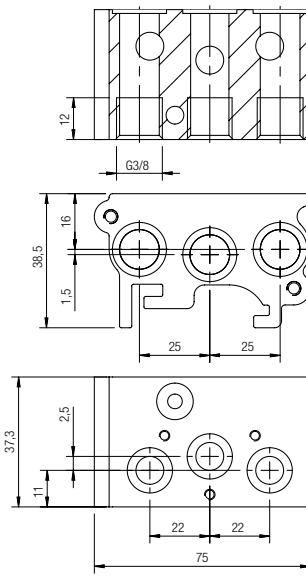
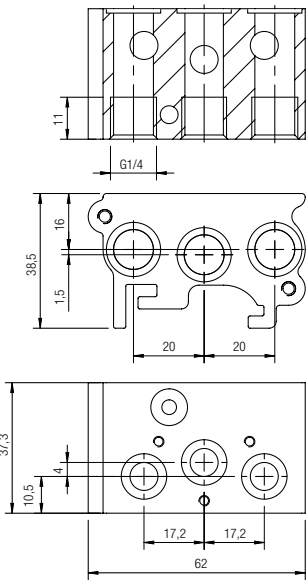
Part Number	Size	Pack.
<b>01V B4 0 00 00</b>	G 1/8	1
<b>01V B4 0 00 01</b>	G 1/4	1

**01V B1 0 00 00**

**01V B1 0 00 01**

**01V B2 0 00 00**

**01V B2 0 00 01**

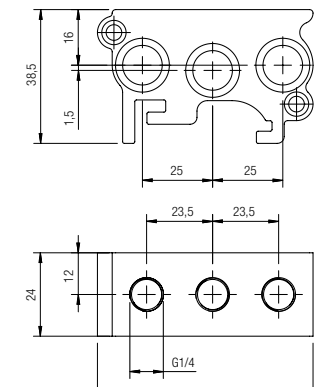
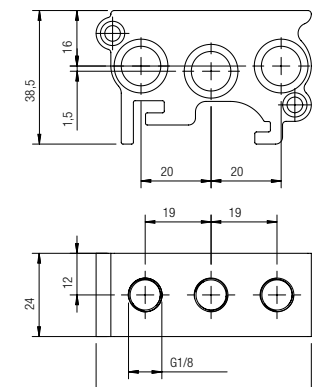
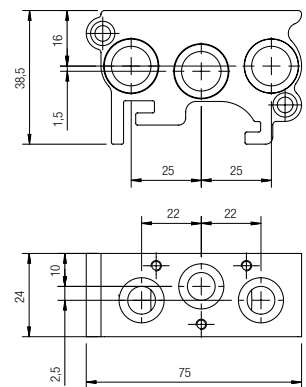
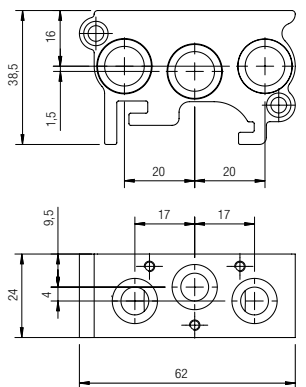


**01V B3 0 00 00**

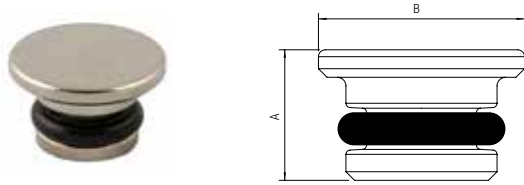
**01V B3 0 00 01**

**01V B4 0 00 00**

**01V B4 0 00 01**

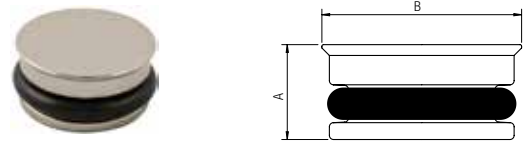


**PLUG FOR 3 WAY VALVE CONNECTION**



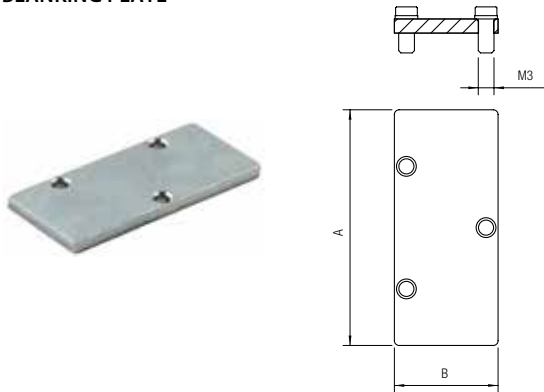
Part No.	Size	A	B	Pack.
<b>01V B6 0 00 00</b>	1/8	7.5	12	1
<b>01V B6 0 00 01</b>	1/4	7.5	14	1

**INTERMEDIATE PLUG FOR MODULAR BASE**



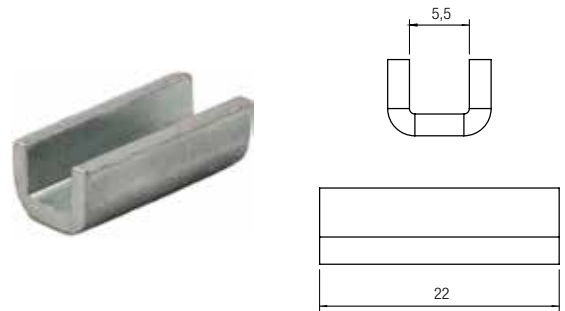
Part No.	Size	A	B	Pack.
<b>01V B8 0 00 00</b>	1/8	7.5	12	1
<b>01V B8 0 00 01</b>	1/4	7.5	14	1

**BLANKING PLATE**

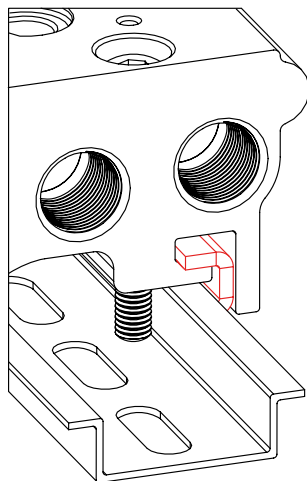


Part No.	Size	A	B	Pack.
<b>01V B9 0 00 00</b>	1/8	50	22	1
<b>01V B9 0 00 01</b>	1/4	62	22	1

**OMEGA BAR BRACKET**



Part No.	Size	Pack.
<b>01V B7 0 00 00</b>	1/8 - 1/4	2



TECHNICAL CHARACTERISTICS	
TYPE OF MOUNTING	SCREW
WITH EN 50222 OMEGA BAR THICKNESS - 15 mm	M5 x 40
WITH EN 50222 OMEGA BAR THICKNESS - 7.5 mm	M5 x 35
DIRECT ON BASE	M4 x 40

MICRO VALVES

02V





**MECHANICALLY ACTUATED MICRO VALVES**



**TECHNICAL CHARACTERISTICS**



**Reference Standard**

- 1907/2006  
**REACH** ✓
- 2011/65/CE  
**RoHS** ✓
- PED  
2014/68/UE



**Component Parts and Materials**

- Anodised aluminium body
- Stainless Steel Spring
- NBR seals

		M5	
	THREADED	M5	
	6 bar FLOW RATE with Δp 1 bar	100 Nl/min	
	OPERATING PRESSURE	2 ÷ 10 bar 29 ÷ 145 psi	
	DRIVING FORCE	6 N	
	TEMPERATURE	min	-10 °C 14 °F
		max	+60 °C 140 °F

Series	Actuation	Reactuation	Function	Size
--------	-----------	-------------	----------	------

**0 2 V**

**G**

**0**

**3**

**N C**

**B 5**

- G** = Tappet
- R** = Short Roller
- U** = Uni-directional Roller
- E** = Panel Mounting  
Taper Microvalve

**0** = Monostable  
spring return

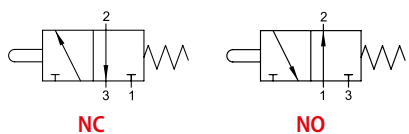
**3** = 3/2

**NO** = Normally open  
**NC** = Normally closed

**B5** = M5 (metric)

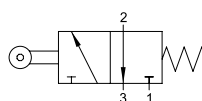
**3/2**

**TAPPET - SPRING RETURN**



**3/2**

**SHORT ROLLER - SPRING RETURN**

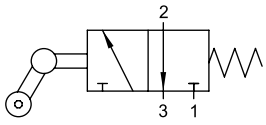


Part No.	Function	Size	Pack.
<b>02V G0 3 NC B5</b>	3/2 <b>NC</b>	M5 (metric)	1
<b>02V G0 3 NO B5</b>	3/2 <b>NO</b>	M5 (metric)	1

Part No.	Function	Size	Pack.
<b>02V R0 3 NC B5</b>	3/2 <b>NC</b>	M5 (metric)	1

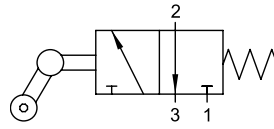
**3/2**

UNI-DIRECTIONAL ROLLER - SPRING RETURN



**3/2**

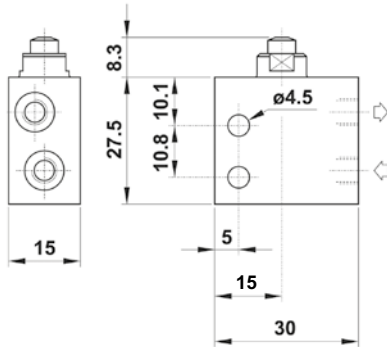
PANEL MOUNTED TAPPET - SPRING RETURN



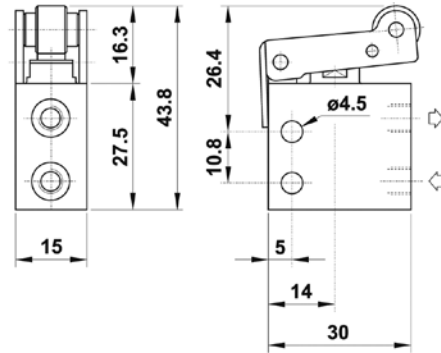
Part No.	Function	Size	Pack.
02V U0 3 NC B5	3/2 NC	M5 (metric)	1

Part No.	Function	Size	Pack.
02V E0 3 NC B5	3/2 NC	M5 (metric)	1

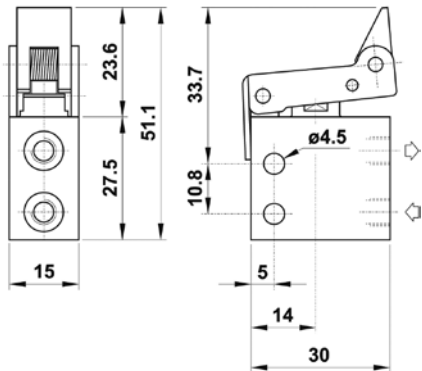
02V G0 3 NC B5



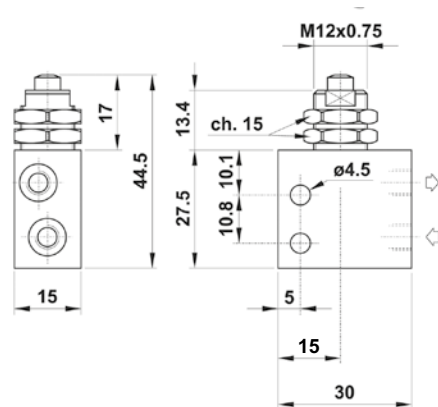
02V R0 3 NC B5



02V U0 3 NC B5



02V E0 3 NC B5



**16 MM VALVES - MECHANICAL AND MANUAL OPERATORS**



**16 MM VALVES**



**TECHNICAL CHARACTERISTICS**



**Reference Standard**

1907/2006  
**REACH** ✓

2011/65/CE  
**RoHS** ✓

PED  
2014/68/UE



**Component Parts and Materials**

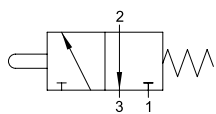
- Anodised aluminium body
- Stainless Steel Spring
- NBR seals

		1/8
	THREADED	G 1/8
	6 bar FLOW RATE with Δp 1 bar	350 NI/min
	OPERATING PRESSURE	2 ÷ 10 bar 29 ÷ 145 psi
	TEMPERATURE	min -10 °C 14 °F
		max +60 °C 140 °F

Series	Actuation	Reactuation	Function	Size
<b>0 3 V</b>	<b>G</b>	<b>0</b>	<b>3</b> <b>NC</b>	<b>0 2</b>
	G = Tappet R = Short Roller H = Lever Z = Long Roller	0 = Monostable spring return	3 = 3/2 5 = 5/2 NC = Normally closed 00 = Function not provided	02 = 1/8

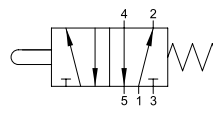
**3/2**

**TAPPET - SPRING RETURN**



**5/2**

**TAPPET - SPRING RETURN**

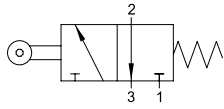


Part No.	Function	Size	Driving Force	Pack.
<b>03V G0 3 NC 02</b>	3/2 NC	G 1/8	19.6 N	1

Part No.	Function	Size	Driving Force	Pack.
<b>03V G0 5 00 02</b>	5/2	G 1/8	39.2 N	1

**3/2**

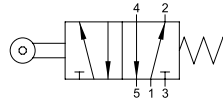
SHORT ROLLER - SPRING RETURN



Part No.	Function	Size	Driving Force	Pack.
<b>03V R0 3 NC 02</b>	3/2 <b>NC</b>	G 1/8	9.8 N	1

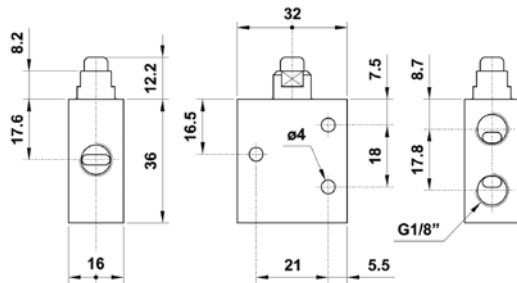
**5/2**

SHORT ROLLER - SPRING RETURN

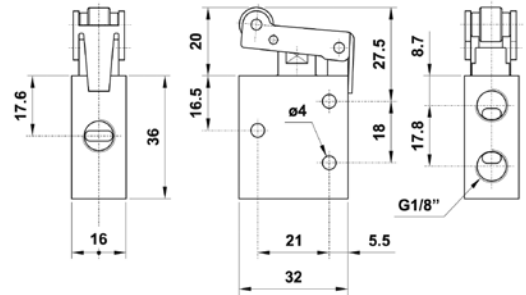


Part No.	Function	Size	Driving Force	Pack.
<b>03V R0 5 00 02</b>	5/2	G 1/8	21.5 N	1

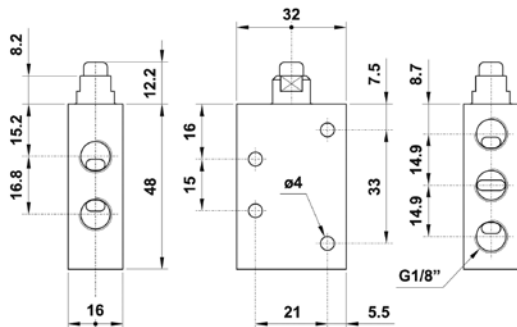
03V G0 3 NC 02



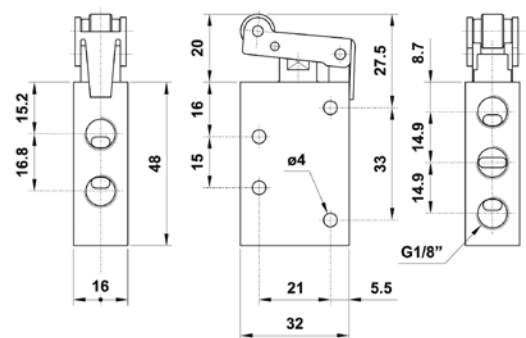
03V R0 3 NC 02



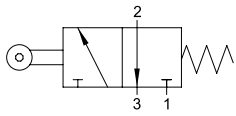
03V G0 5 00 02



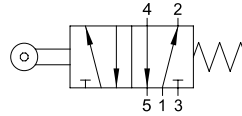
03V R0 5 00 02



**3/2**  
LONG ROLLER - SPRING RETURN



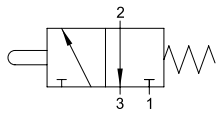
**5/2**  
LONG ROLLER - SPRING RETURN



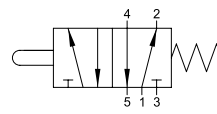
Part No.	Function	Size	Driving Force	Pack.
<b>03V Z0 3 NC 02</b>	3/2 <b>NC</b>	G 1/8	8.3 N	1

Part No.	Function	Size	Driving Force	Pack.
<b>03V Z0 5 00 02</b>	5/2	G 1/8	14.2 N	1

**3/2**  
LEVER OPERATED - SPRING RETURN



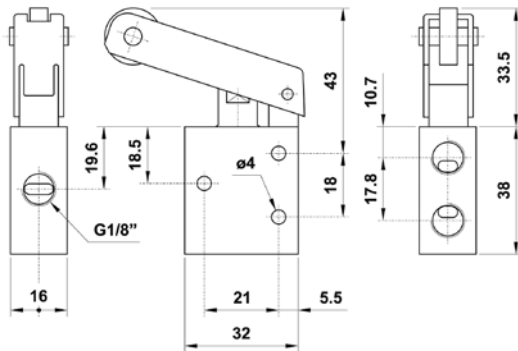
**5/2**  
LEVER OPERATED - SPRING RETURN



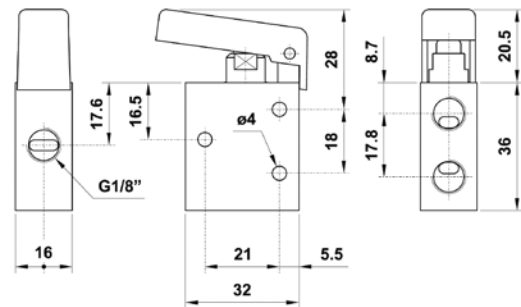
Part No.	Function	Size	Driving Force	Pack.
<b>03V H0 3 NC 02</b>	3/2 <b>NC</b>	G 1/8	7.8 N	1

Part No.	Function	Size	Driving Force	Pack.
<b>03V H0 5 00 02</b>	5/2	G 1/8	13.7 N	1

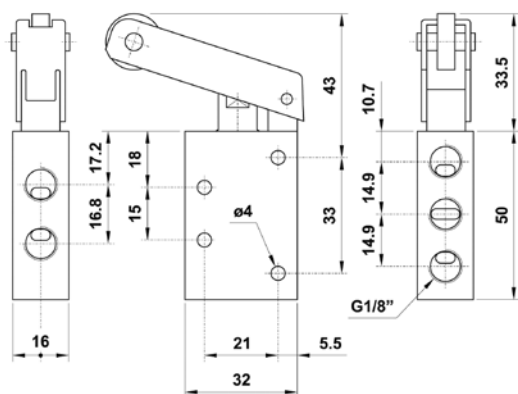
03V Z0 3 NC 02



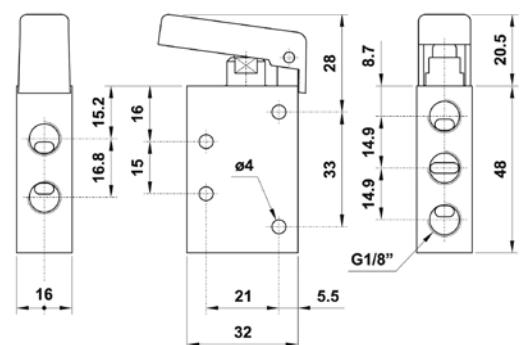
03V H0 3 NC 02



03V Z0 5 00 02



03V H0 5 00 02



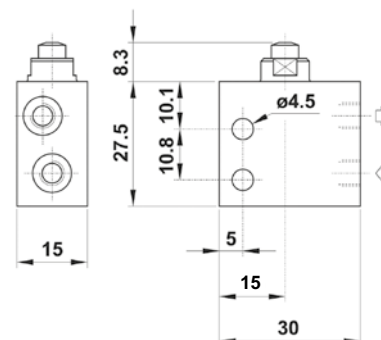
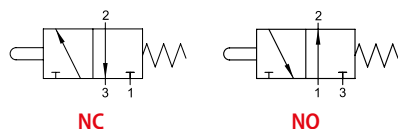
PANEL, PUSH BUTTON AND SELECTOR VALVES



**MICRO VALVES**

**3/2**

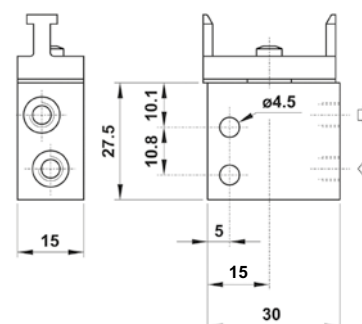
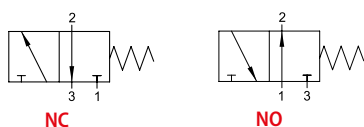
**TAPPET - SPRING RETURN**



Part No.	Function	Size	Pack.
02V G0 3 NC B5	3/2 NC	M5 (metric)	1
02V G0 3 NO B5	3/2 NO	M5 (metric)	1

**3/2**

**PANEL MOUNTED ACTUATOR - SPRING RETURN**



Part No.	Function	Size	Pack.
02V D0 3 NC B5	3/2 NC	M5 (metric)	1
02V D0 3 NO B5	3/2 NO	M5 (metric)	1

**INTERFACE FOR CONNECTION BUTTON**

Part No.	Function	Pack.
04V 06 0 00 01	SINGLE	1
04V 06 0 00 02	DOUBLE	1



04V 06 0 00 02

04V 06 0 00 01

**PUSH BUTTON AND SELECTOR**

**PROTECTED PUSH BUTTON**

Part No.	Standard Color	Pack.
04V 01 0 00 01		1



Part No.	Color	Pack.
04V 01 P 00 VE		1
04V 01 P 00 GI		1
04V 01 P 00 AZ		1



The following colors can be ordered separately.



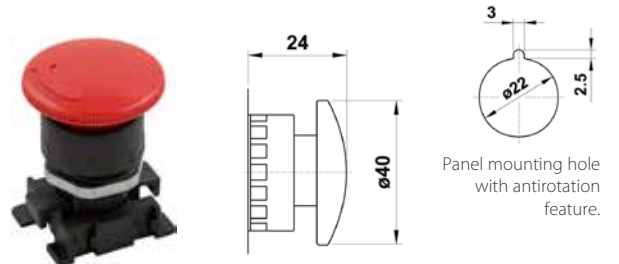
**AXIAL MONO-STABLE MUSHROOM**

Part No.	Color	Pack.
04V 02 0 0N 01	■	1
04V 02 0 0R 01	■	1



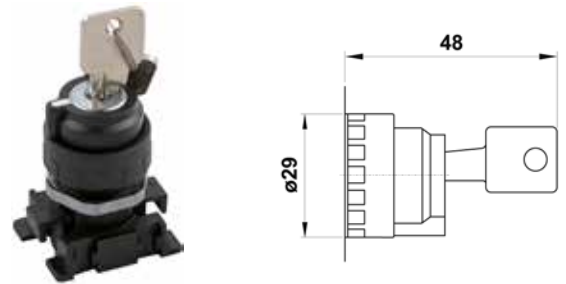
**TURN TO UNLOCK MUSHROOM**

Part No.	Color	Pack.
04V 02 0 0R 02	■	1



**KEY SELECTOR**

Part No.	Color	Function	Position to pull the key out	Pack.
04V 03 0 00 01	■	0 - 1	Only in central position	1
04V 03 0 00 02	■	0 - 1	Both position	1
04V 03 0 00 03	■	2 - 0 - 1	Only in central position	1



**SHORT LEVER SELECTOR**

Part No.	Color	Function	Pack.
04V 04 0 0N 01	■	0 1	1
04V 04 0 0N 02	■	0 ← 1	1
04V 04 0 0N 03	■	2 0	1
04V 04 0 0N 04	■	2 → 0 ← 1	1



**LONG LEVER SELECTOR**

Part No.	Color	Function	Pack.
04V 05 0 0N 01	■	0 1	1
04V 05 0 0N 02	■	0 ← 1	1
04V 05 0 0N 03	■	2 0	1
04V 05 0 0N 04	■	2 → 0 ← 1	1



18 MM VDMA VALVES

05V



**18 MM SOLENOID PILOT VALVES - VDMA**



**TECHNICAL CHARACTERISTICS**



**Reference Standard**

- 1907/2006  
**REACH**
- 2011/65/CE  
**RoHS**
- PED  
2014/68/UE
- ISO 15407-1  
VDMA 24563 SIZE 02 (18 mm)



**Component Parts and Materials**

- Anodised aluminium body
- Nickel-plated spool
- NBR seals

	6 bar FLOW RATE with Δp 1 bar		550 NI/min
	OPERATING PRESSURE	Monostable	2.5 ÷ 10 bar 36.5 ÷ 145 psi
		Bistable	1 ÷ 10 bar 14.5 ÷ 145 psi
	TEMPERATURE	min	-10 °C 14 °F
		max	+60 °C 140 °F
	SOLENOID VOLTAGE		24V DC ÷ 24V AC
	MINIMUM POWER		2W - 3VA
	MANUAL CONTROL		MONOSTABLE
	Response time	Monostable	<b>TRA</b> = 13 ms <b>TRR</b> = 26 ms
		Bistable	<b>TRA=TRR</b> = 24 ms

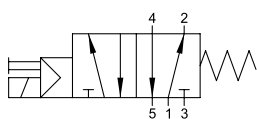
**TRA** = Response time with energised coil

**TRR** = Response time with deenergised coil

Series	Actuation	Reactuation	Function	Size
<b>0 5 V</b>	<b>S</b> S = Solenoid	<b>0</b> 0 = Monostable spring return 1 = Bistable	<b>7</b> 3 = 3/2 5 = 5/2 7 = 5/3	<b>CC</b> CC = All Ports Blocked OC = Normally exhausted OO = Function not provided
				<b>00</b> 00 = 24V DC 01 = 24V AC

**5/2**

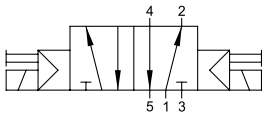
**SINGLE SOLENOID PILOT - SPRING RETURN**



Part No.	Function	Solenoid	Pack.
<b>05V S0 5 00 00</b>	5/2	24V DC	1
<b>05V S0 5 00 01</b>	5/2	24V 50/60Hz	1

**5/2**

**DOUBLE SOLENOID PILOT**

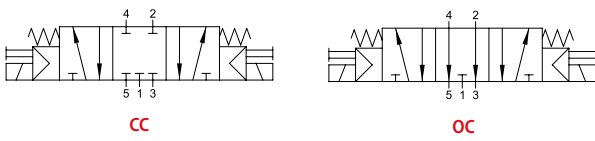


Part No.	Function	Solenoid	Pack.
05V S1 5 00 00	5/2	24V DC	1
05V S1 5 00 01	5/2	24V 50/60Hz	1



**5/3**

**DOUBLE SOLENOID PILOT - SPRING CENTERED**

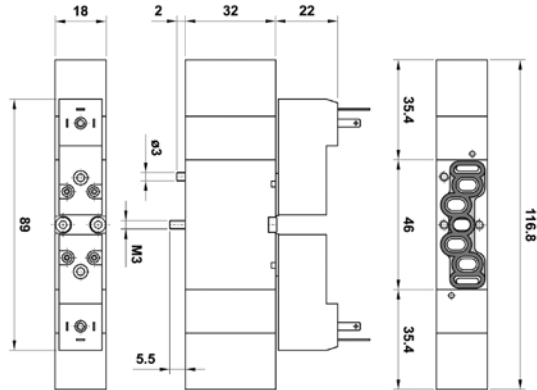
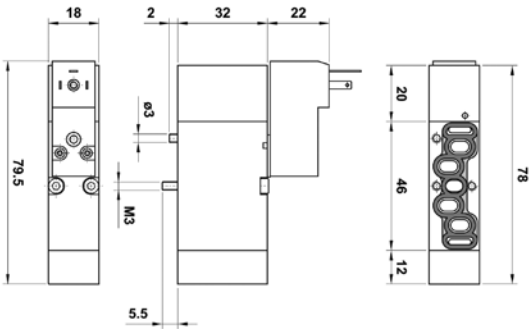


Part No.	Function	Solenoid	Pack.
05V S0 7 CC 00	5/3 CC	24V DC	1
05V S0 7 OC 00	5/3 OC	24V DC	1
05V S0 7 CC 01	5/3 CC	24V 50/60Hz	1
05V S0 7 OC 01	5/3 OC	24V 50/60Hz	1

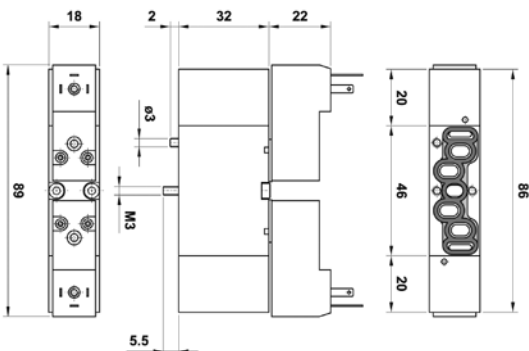


05V S0 5 00 00 05V S0 5 00 01

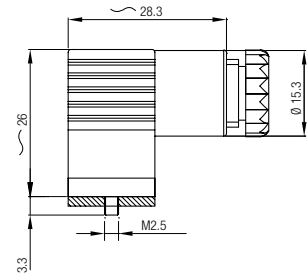
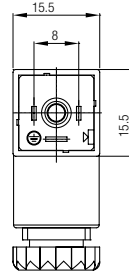
05V S0 7 CC 00 05V S0 7 OC 00 05V S0 7 CC 01 05V S0 7 OC 01



05V S1 5 00 00 05V S1 5 00 01



## Connectors 15 mm



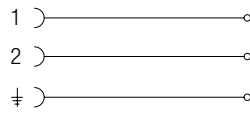
Part No.	Color	Characteristics	Pack.
<b>CON11 000 01</b>	■	STANDARD 2 PIN	1
<b>CON12 024 00</b>	□	LED + VDR 0 - 24V	1

■ Black                                      □ Transparent

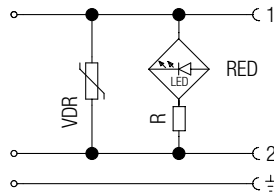
**VDR:** Fitted with varistors as surge protection device.



### Wiring



CON11 000 01



CON12 024 00

DEGREE OF PROTECTION

IP65 IEC 60529

CABLE DIAMETER

4 ÷ 6 mm

TERMINALS

DIN 4365 C

**18 MM AIR PILOT VALVES**



**TECHNICAL CHARACTERISTICS**



**Reference Standard**

1907/2006  
**REACH** ✓

2011/65/CE  
**RoHS** ✓

PED  
2014/68/UE

ISO 15407-1  
VDMA 24563 SIZE 02 (18 mm)



**Component Parts and Materials**

- Anodised aluminium body
- Nickel-plated spool
- NBR seals

	6 bar FLOW RATE with $\Delta p$ 1 bar	550 NI/min
	PRESSURE DRIVE	0 ÷ 10 bar 0 ÷ 145 psi
	OPERATING PRESSURE	Monostable 2 ÷ 10 bar 29 ÷ 145 psi
		Bistable 1 ÷ 10 bar 14.5 ÷ 145 psi
	TEMPERATURE	min -10 °C 14 °F
		max +60 °C 140 °F
	RESPONSE TIME	Monostable <b>TRA</b> = 12 ms
		Bistable <b>TRR</b> = 24 ms
		Bistable <b>TRA=TRR</b> = 21 ms

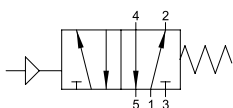
**TRA** = Response time with energised coil

**TRR** = Response time with deenergised coil

Series	Actuation	Reactuation	Function	Size
<b>0 5 V</b>	<b>P</b> P = Pneumatic	<b>0</b> 0 = Monostable spring return 1 = Bistable	<b>5</b> 5 = 5/2 7 = 5/3	<b>0 0</b> CC = All Ports Blocked OC = Normally exhausted 00 = Function not provided

**5/2**

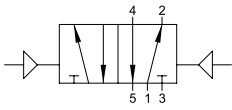
**SINGLE AIR PILOT - SPRING RETURN**



Part No.	Function	Pack.
<b>05V P0 5 00 00</b>	5/2	1

**5/2**

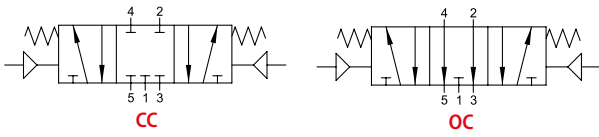
**DOUBLE AIR PILOT**



Part No.	Function	Pack.
05V P1 5 00 00	5/2	1

**5/3**

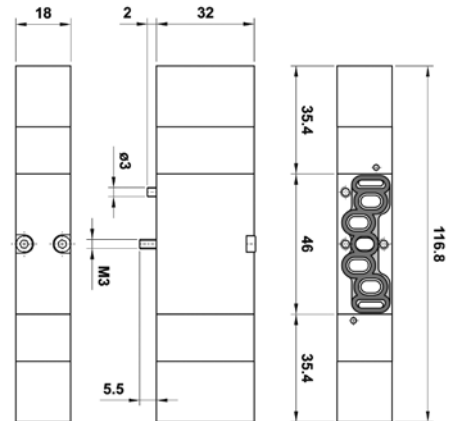
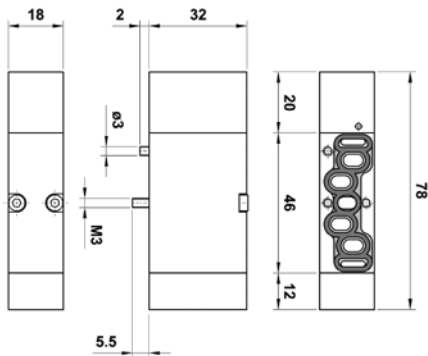
**DOUBLE AIR PILOT - SPRING CENTERED**



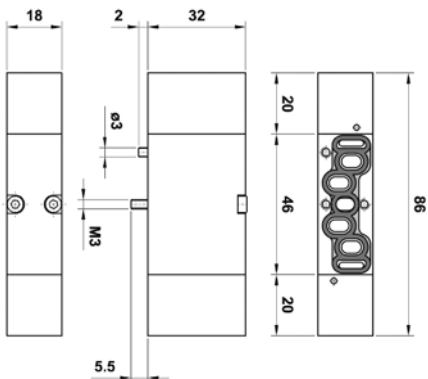
Part No.	Function	Pack.
05V P0 7 CC 00	5/3 CC	1
05V P0 7 OC 00	5/3 OC	1

05V P0 5 00 00

05V P0 7 CC 00 05V P0 7 OC 00



05V P1 5 00 00



**MODULAR BASES AND ACCESSORIES**

All the bases are supplied with screws and seals to secure the correct assembly.

**FRONT MANIFOLD END PLATE**



**REAR MANIFOLD END PLATE**



Part No.	Pack.
<b>05V B1 0 00 00</b>	1

Part No.	Pack.
<b>05V B2 0 00 00</b>	1

**MODULAR BASE**



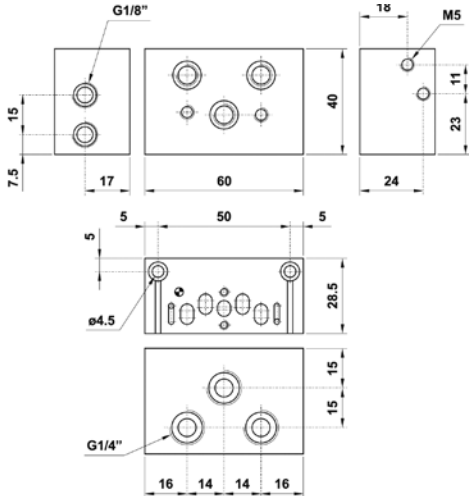
**INTERMEDIATE PRESSURE BASE**



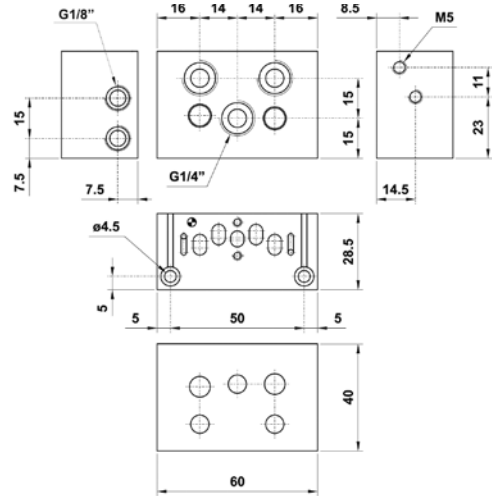
Part No.	Pack.
<b>05V B3 0 00 00</b>	1

Part No.	Pack.
<b>05V B4 0 00 00</b>	1

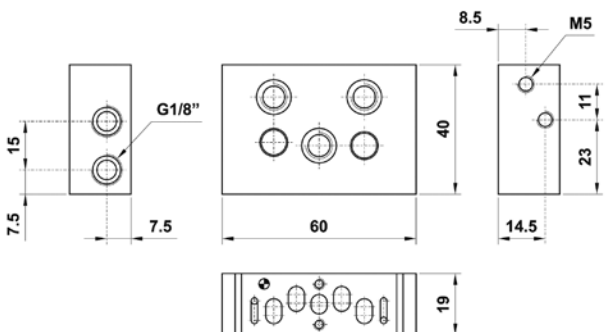
**05V B1 0 00 00**



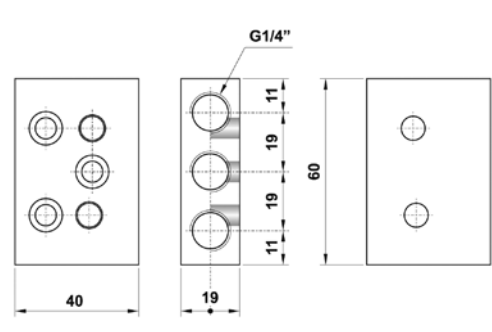
**05V B2 0 00 00**



**05V B3 0 00 00**



**05V B4 0 00 00**





**INTERMEDIATE PLUG**



Part No.	Pack.
<b>05V B8 0 00 00</b>	1

**GASKET FOR INTERMEDIATE PLUG**



The gasket is supplied with M8 dowel.

Part No.	Pack.
<b>05V B7 0 00 00</b>	1

**BLANKING PLATE**



Part No.	Pack.
<b>05V B9 0 00 00</b>	1

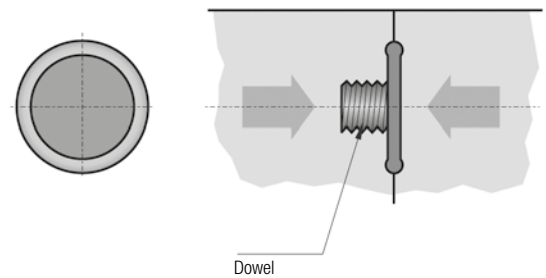
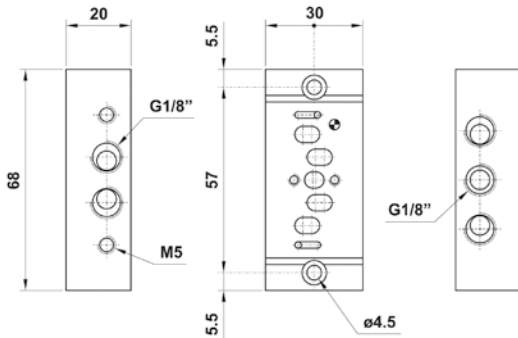
**INDIVIDUAL BASE**



Part No.	Pack.
<b>05V B5 0 00 00</b>	1

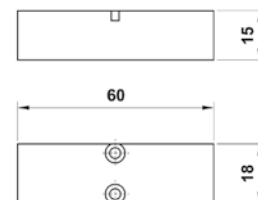
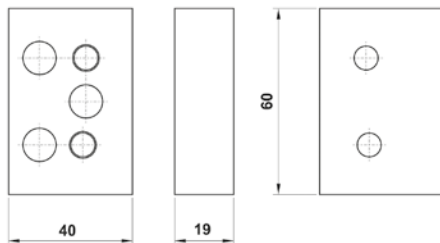
05V B5 0 00 00

05V B7 0 00 00

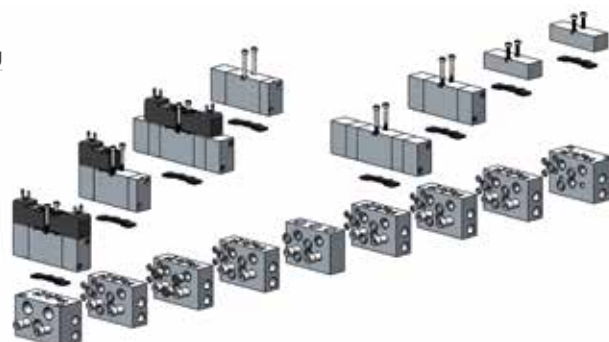


05V B8 0 00 00

05V B9 0 00 00



Example of assembling



PEDAL VALVES

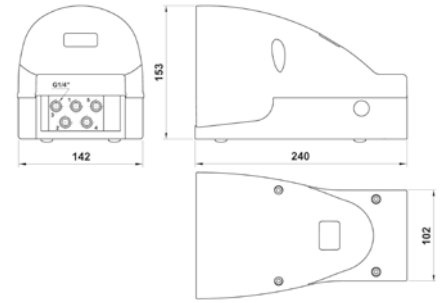
**A90**





Reference Standard

- 1907/2006  
**REACH** ✓
- 2011/65/CE  
**RoHS** ✓
- PED  
2014/68/UE

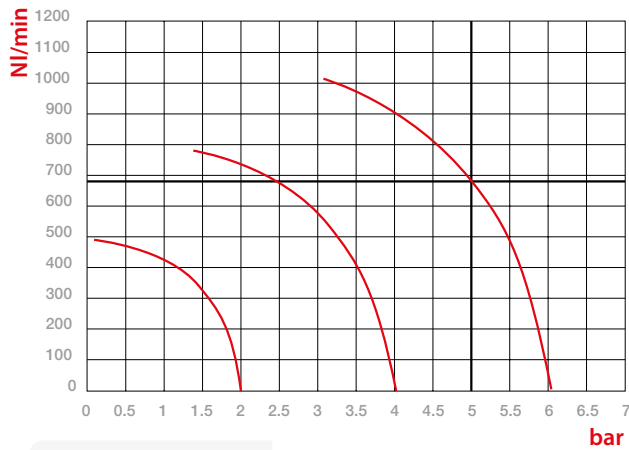


Functions

- |  |   |
|--|---|
| <p><b>5/2</b></p> <p>SUPPLY = (1)</p> <p>OUTPUT = (2) (4)</p> <p>EXHAUST = (3) (5)</p> | <p><b>3/2</b></p> <p>SUPPLY = (1)</p> <p>OUTPUT = (2) <del>(4)</del></p> <p>EXHAUST = (3) (5)</p> |
|--|---|



Flow Rates

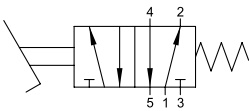


NI/min      bar  
Flow          Pressures

		1/4
	THREADED	G 1/4
	OPERATING PRESSURE	2 ÷ 10 bar 29 ÷ 145 psi
	TEMPERATURE	max +60 °C 140 °F
	PROTECTION	TECHNOPOLYMER

## 5/2

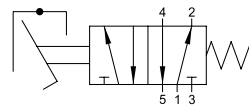
PEDAL WITH PROTECTION COVER - SPRING RETURN



Part No.	Function	Size	Pack.
06V 00 0 00 01	5/2	G 1/4	1

## 5/2

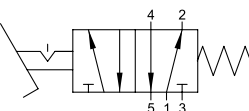
PEDAL WITH PROTECTION COVER AND SAFETY FEATURE - SPRING RETURN



Part No.	Function	Size	Pack.
06V 00 0 00 02	5/2	G 1/4	1

## 5/2

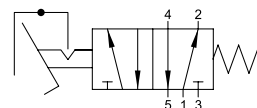
PEDAL WITH PROTECTION COVER DETENT - SPRING RETURN



Part No.	Function	Size	Pack.
06V 00 0 00 03	5/2	G 1/4	1

## 5/2

PEDAL WITH DETENT AND SAFETY LOCK - SPRING RETURN



Part No.	Function	Size	Pack.
06V 00 0 00 04	5/2	G 1/4	1

SOLENOID VALVES

**A70**





**TECHNICAL CHARACTERISTICS**



**Reference Standard**

1907/2006 <b>REACH</b> ✓	2011/65/CE <b>RoHS</b> ✓	PED 2014/68/UE	ATEX 2014/34/UE
-----------------------------	-----------------------------	-------------------	--------------------



**Component Parts and Materials**

- Anodised aluminium body
- NBR seals

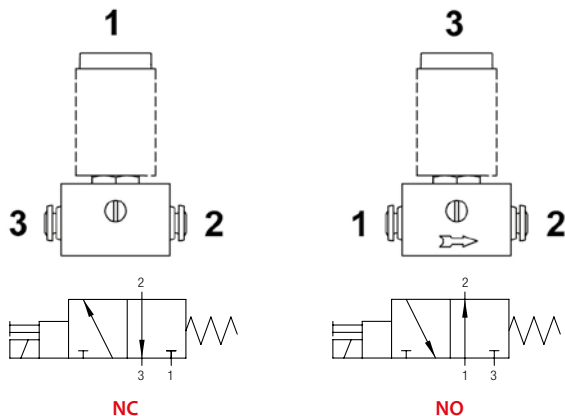
	THREADED	G 1/8 - automatic Ø 5/32 - (4)
	6 bar FLOW RATE with Δp 1 bar	30 NI/min
	OPERATING PRESSURE	0 ÷ 10 bar 0 ÷ 145 psi
	TEMPERATURE	min -10 °C 14 °F max +60 °C 140 °F
	SOLENOID VOLTAGE	24V DC - 12V DC - 24V AC 110V AC - 220V AC
	MINIMUM POWER	3W - 5VA
	MANUAL CONTROL	BISTABLE
	TORQUE OF TIGHTENING THE NUT SOLENOID	0.6 Nm

Series	Actuation	Reactuation	Function	Size
<b>0 7 V</b>	<b>S</b>	<b>0</b>	<b>3</b>	<b>N C</b>
	S = Solenoid with manual override	0 = Monostable spring return	3 = 3/2	NO = Normally open NC = Normally closed
				<b>0 2</b> 02 = 1/8 X1 = Ø 5/32 (4)

**3/2**

**SOLENOID WITH MANUAL OVERRIDE**

**SOLENOID WITH MANUAL OVERRIDE**



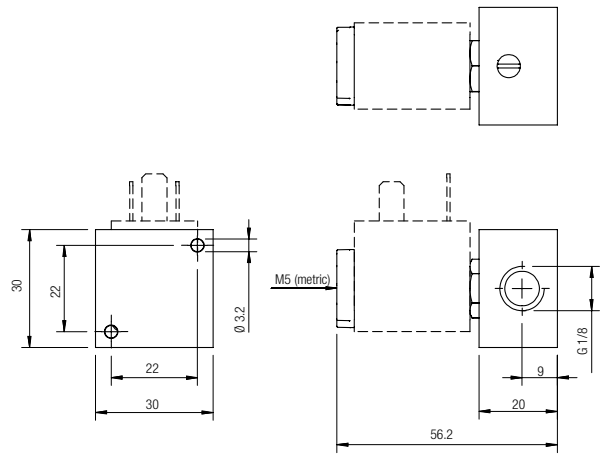
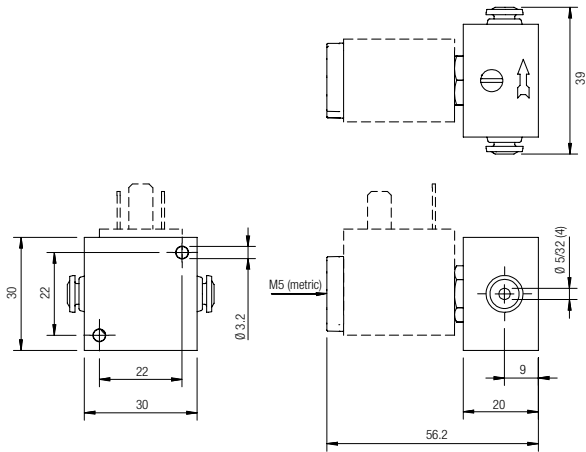
Part No.	Function	Size	Pack.
07V S0 3 NC 02	3/2 NC	G 1/8	1
07V S0 3 NC X1	3/2 NC	Ø 5/32 (4)	1
07V S0 3 NO 02	3/2 NO	G 1/8	1
07V S0 3 NO X1	3/2 NO	Ø 5/32 (4)	1

* 07V Y0 3 NC 02	3/2 NC	G 1/8	1
------------------	--------	-------	---

\* Vacuum

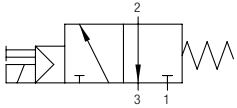
5/32 - (4)

G1/8

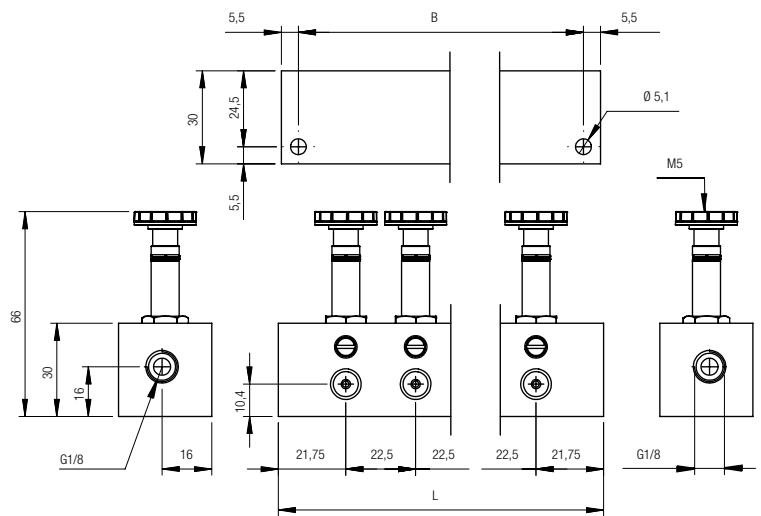


**FIXED LENGTH MANIFOLD WITH MANUAL OVERRIDE**

**SOLENOID VALVES ON FIXED LENGTH MANIFOLD**



Part No.	Function	B	L	Size	Pack.
07V B0 0 00 02	2	55	66	G 1/8	1
07V B0 0 00 03	3	77.5	88.5	G 1/8	1
07V B0 0 00 04	4	100	111	G 1/8	1
07V B0 0 00 05	5	122.5	133.5	G 1/8	1
07V B0 0 00 06	6	145	156	G 1/8	1
07V B0 0 00 07	7	167.5	178.5	G 1/8	1
07V B0 0 00 08	8	190	201	G 1/8	1
07V B0 0 00 09	9	212.5	223.5	G 1/8	1
07V B0 0 00 10	10	235	246	G 1/8	1

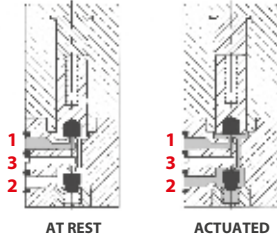


**10 MM MINIATURE SOLENOID VALVES**

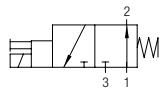
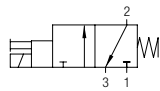
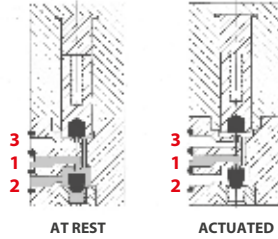


**TECHNICAL CHARACTERISTICS**

**NORMALLY CLOSED (NC) 3/2**



**NORMALLY OPEN (NO) 3/2**



Vacuum: 1 EXH  
2 OUT  
3 IN



**Reference Standard**

- 1907/2006  
**REACH** ✓
- 2011/65/CE  
**RoHS** ✓
- PED  
2014/68/UE

	MAX PRESSURE	Vacuum ÷ 7 bar Vacuum ÷ 101.5 psi		VOLTAGE	12 V DC ÷ 24V DC
	TEMPERATURE	- 5 ÷ 50 °C 23 ÷ 122 °F		POWER	1.3 W
	6 bar FLOW RATE with Δp 1 bar	14 NI/min		VOLTAGE TOLLERANCE	-5% +10%
	EXHAUST FLOW	22 NI/min		RESPONSE TIME WHEN ENERGIZED	8 ms
	ORIFICE SIZE	0.7 mm		RESPONSE TIME WHEN DE-ENERGIZED	10 ms
	MAX NUMBER OF CYCLES PER MINUTE	2700		CLASS OF PROTECTION	F (155 °C) F (311 °F)
	LIFE EXPECTANCY	50 MILION CYCLES			

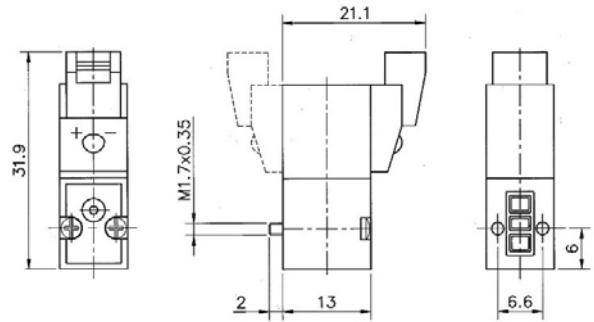
Series	Actuation	Reactuation	Function	Orifice size	Voltage
<b>0 7 V</b>	<b>1</b> 1 = 10 mm	<b>1</b> 1 = line connector + led 2 = 90° connector + led 3 = Cable (300 mm)	<b>3</b> 3 = 3/2	<b>NC</b> NO = Normally open NC = Normally closed	<b>0</b> 0 = 0.7 mm <b>0</b> 0 = 12 V DC 1 = 24 V DC

**3/2**

10 MM SOLENOID VALVE WITH LINE CONNECTOR + LED

IP50

07V 11 3 NC 01 07V 11 3 NC 00 07V 11 3 NO 01 07V 11 3 NO 00



Part No.	Function	Vacuum	Solenoid	Pack.
07V 11 3 NC 01	3/2 NC	NO	24V DC	1
07V 11 3 NC 00	3/2 NC	NO	12V DC	1
07V 11 3 NO 01	3/2 NO	NC	24V DC	1
07V 11 3 NO 00	3/2 NO	NC	12V DC	1

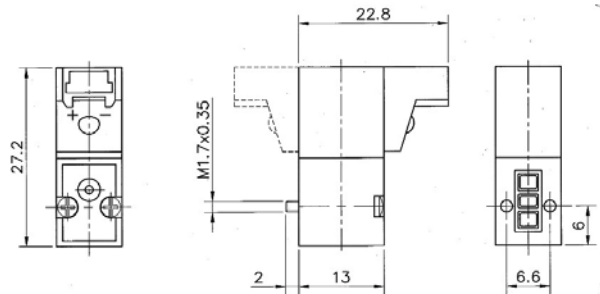
Item integrated with surge protector.

**3/2**

10 MM SOLENOID VALVE WITH 90° CONNECTOR + LED

IP50

07V 12 3 NC 01 07V 12 3 NC 00 07V 12 3 NO 01 07V 12 3 NO 00



Part No.	Function	Vacuum	Solenoid	Pack.
07V 12 3 NC 01	3/2 NC	NO	24V DC	1
07V 12 3 NC 00	3/2 NC	NO	12V DC	1
07V 12 3 NO 01	3/2 NO	NC	24V DC	1
07V 12 3 NO 00	3/2 NO	NC	12V DC	1

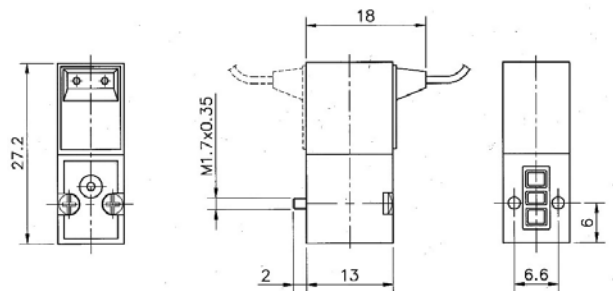
Item integrated with surge protector.

**3/2**

10 MM SOLENOID VALVE WITH CABLE (300 MM)

IP65

07V 13 3 NC 01 07V 13 3 NC 00 07V 13 3 NO 01 07V 13 3 NO 00

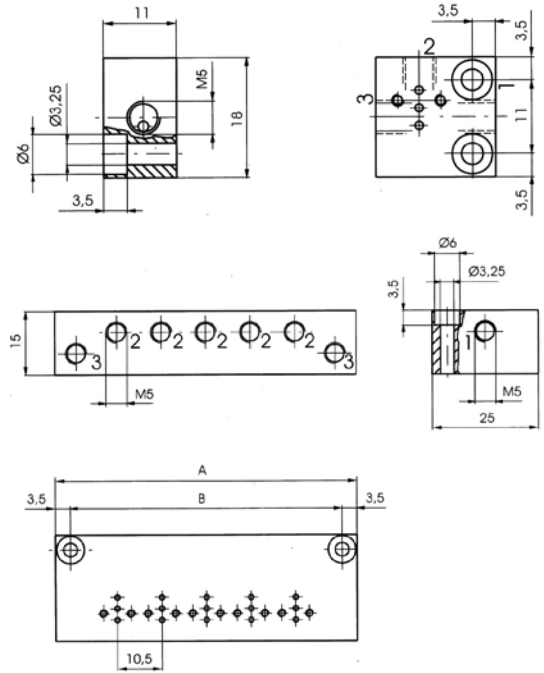


Part No.	Function	Vacuum	Solenoid	Pack.
07V 13 3 NC 01	3/2 NC	NO	24V DC	1
07V 13 3 NC 00	3/2 NC	NO	12V DC	1
07V 13 3 NO 01	3/2 NO	NC	24V DC	1
07V 13 3 NO 00	3/2 NO	NC	12V DC	1

Item integrated with surge protector.

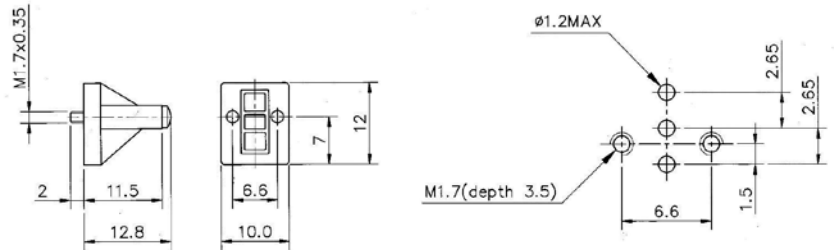


**INDIVIDUAL AND FIXED LENGTH MANIFOLD BASES**



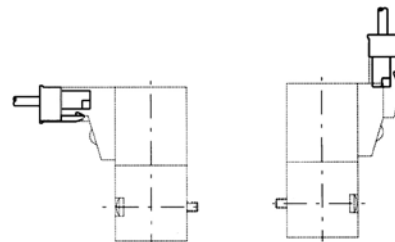
Part No.	Stations	A	B	Pack.
07V 1B 0 00 01	1	-	-	1
07V 1B 0 00 02	2	39.5	32.5	1
07V 1B 0 00 06	6	81.5	74.5	1
07V 1B 0 00 08	8	102.5	95.5	1

**BLANKING PLATE**



Part No.	Pack.
07V B1 9 00 00	1

**CONNECTOR WITH PVC CABLE**

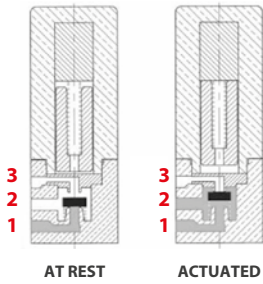


Part No.	Cable Length	Characteristics	Pack.
CON 21 0 24 00	500 mm	0÷24v	1
CON 21 0 24 01	1000 mm	0÷24v	1

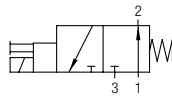
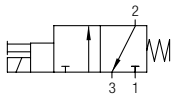
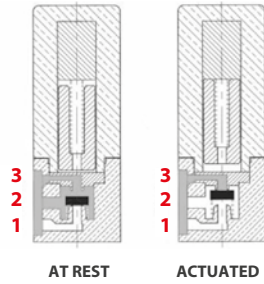
**15 MM MINIATURE SOLENOID VALVES**

**TECHNICAL CHARACTERISTICS**

**NORMALLY CLOSED (NC) 3/2**



**NORMALLY OPEN (NO) 3/2**



**Vacuum:** 1 EXH  
2 OUT  
3 IN

**Reference Standard**

1907/2006 REACH ✓    2011/65/CE RoHS ✓    PED 2014/68/UE    **ISO 15218**

	OPERATING PRESSURE	NO	0 ÷ 7 bar 0 ÷ 101.5 psi
		NC	0 ÷ 10 bar 0 ÷ 145 psi
	TEMPERATURE		- 5 ÷ 50 °C 23 °F ÷ 122 °F
	6 bar FLOW RATE with Δp 1 bar		30 NI/min
	ORIFICE SIZE		1.1 mm
	LIFE EXPECTANCY		50 MILLION CYCLES
	VOLTAGE		12 V DC ÷ 24V DC

	POWER	2.3 W
	VOLTAGE TOLLERANCE	-5% +10%
	RESPONSE TIME WHEN ENERGIZED	10 ÷ 12 ms
	PROTECTION DEGREE	IP50 WITH CONNECTOR
	CLASS OF PROTECTION	F (155 °C) F (311 °F)

Series	Actuation	Reactuation	Function	Orifice size	Voltage	
<b>0 7 V</b>	<b>2</b> 2 = 15 mm	<b>0</b> 0 = For terminals DIN 43650C	<b>3</b> 3 = 3/2	<b>NC</b> NO = Normally open NC = Normally closed	<b>1</b> 1 = 1.1 mm	<b>0</b> 0 = 12 V DC 1 = 24 V DC



NAMUR VALVES

**A80**



**SOLENOID PILOT VALVES**



**TECHNICAL CHARACTERISTICS**



**Reference Standard**

1907/2006  
**REACH** ✓

2011/65/CE  
**RoHS** ✓

PED  
2014/68/UE

ATEX  
2014/34/UE

**VDI/VDE 3845**



**Component Parts and Materials**

- Anodised and painted aluminium body
- Chemical nickel-plated spool
- NBR seals

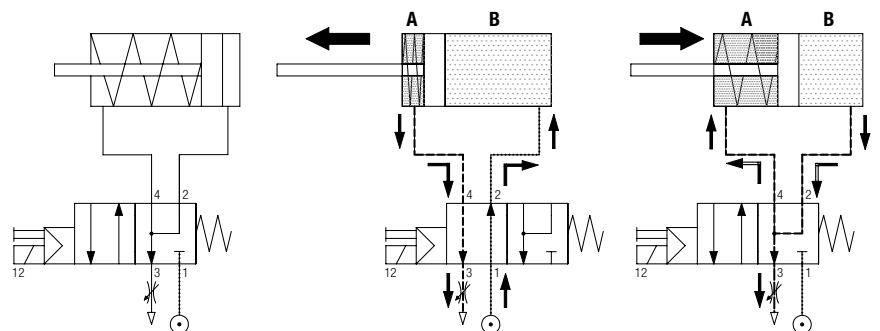
		1/4
	THREADED	G 1/4 - NPTF 1/4
	6 bar FLOW RATE with Δp 1 bar	1200 NI/min
	OPERATING PRESSURE	Monostable 2 ÷ 10 bar 29 ÷ 145 psi
		Bistable 1 ÷ 10 bar 14.5 ÷ 145 psi
	TEMPERATURE	min -10 °C 14 °F
		max +60 °C 140 °F
	SOLENOID VOLTAGE	24V DC - 12V DC - 24V AC 110V AC - 220V AC
	MINIMUM POWER	2W - 3VA
	MANUAL CONTROL	BISTABLE
	TORQUE OF TIGHTENING THE NUT SOLENOID	0.6 Nm

Series	Actuation	Reactuation	Function	Size	Thread
<b>0 8 V</b>	<b>S</b>	<b>0</b>	<b>4</b>	<b>0 3</b>	
	S = Solenoid	0 = Monostable spring return 1 = Bistable	4 = 4/2 5 = 5/2	03 = 1/4	= G N = NPTF
			NC = Normally closed 00 = Function not provided		



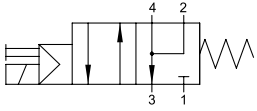
**Schematic diagram of the valve NAMUR 4/2**

To prevent the return phase of the external dirty air enters the chamber in the cylinder, the air escaping from the chamber B is routed to the same room.



**4/2**

**SINGLE SOLENOID PILOT - SPRING RETURN**

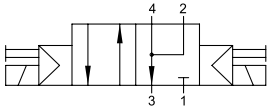


Part No.	Function	Size	Pack.
<b>08V S0 4 NC 03</b>	4/2 <b>NC</b>	G 1/4	1

Part No.	Function	Size	Pack.
<b>08V S0 4 NC 03 N</b>	4/2 <b>NC</b>	NPTF 1/4	1

**4/2**

**DOUBLE SOLENOID PILOT**

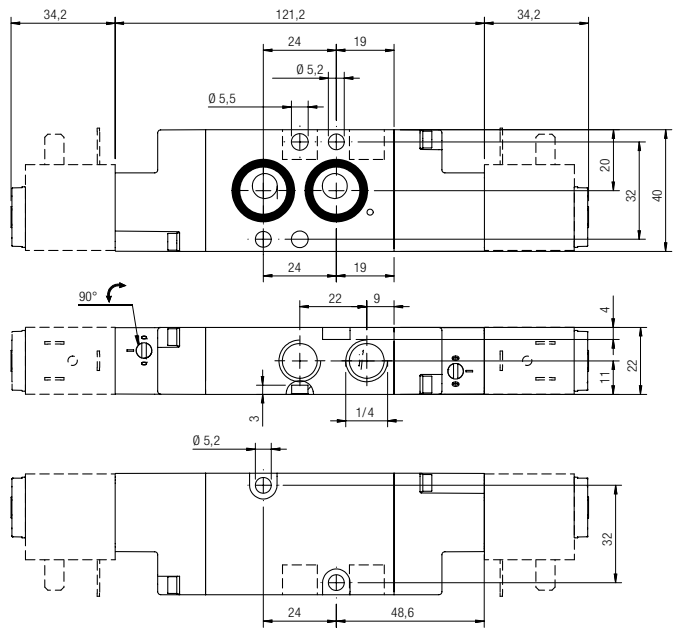
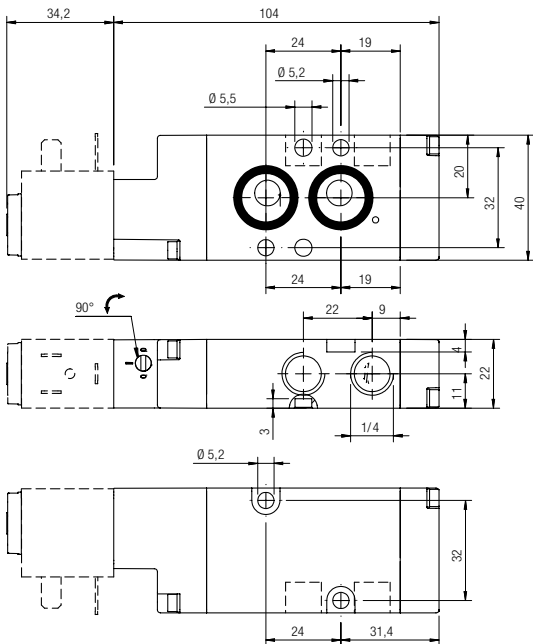


Part No.	Function	Size	Pack.
<b>08V S1 4 00 03</b>	4/2	G 1/4	1

Part No.	Function	Size	Pack.
<b>08V S1 4 00 03 N</b>	4/2	NPTF 1/4	1

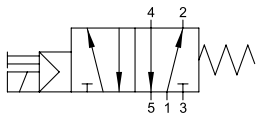
**08V S0 4 NC 03 08V S0 4 NC 03 N**

**08V S1 4 00 03 08V S1 4 00 03 N**



**5/2**

**SINGLE SOLENOID PILOT - SPRING RETURN**

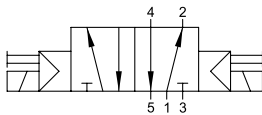


Part No.	Function	Size	Pack.
<b>08V S0 5 00 03</b>	5/2	G 1/4	1

Part No.	Function	Size	Pack.
<b>08V S0 5 00 03 N</b>	5/2	NPTF 1/4	1

**5/2**

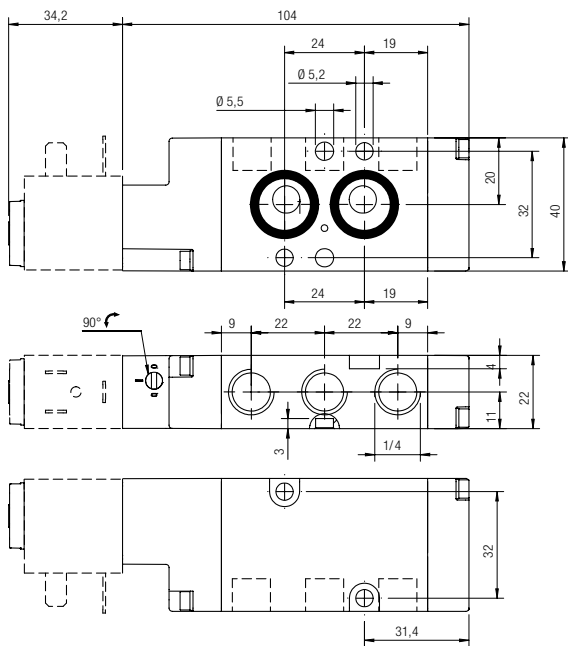
**DOUBLE SOLENOID PILOT**



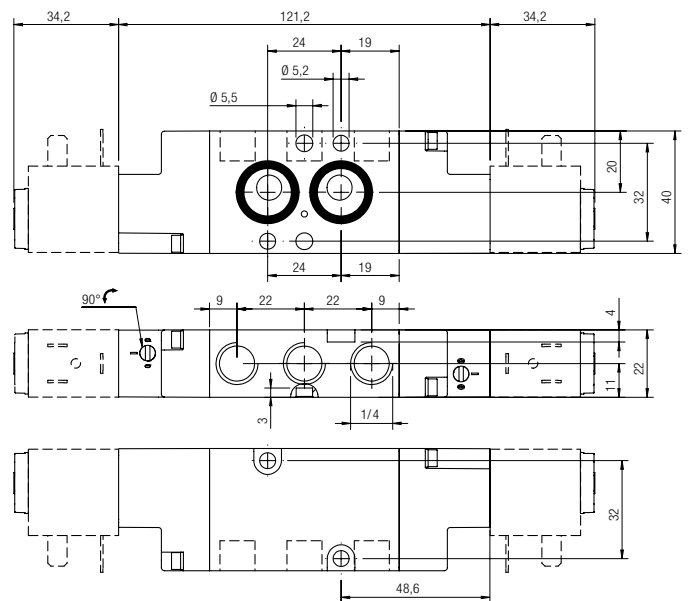
Part No.	Function	Size	Pack.
<b>08V S1 5 00 03</b>	5/2	G 1/4	1

Part No.	Function	Size	Pack.
<b>08V S1 5 00 03 N</b>	5/2	NPTF 1/4	1

**08V S0 5 00 03 08V S0 5 00 03 N**



**08V S1 5 00 03 08V S1 5 00 03 N**



**AIR PILOT VALVES**

**TECHNICAL CHARACTERISTICS**



**Reference Standard**

1907/2006 **REACH** ✓

2011/65/CE **RoHS** ✓

PED 2014/68/UE

ATEX 2014/34/UE

**VDI/VDE 3845**



**Component Parts and Materials**

- Anodised and painted aluminium body
- Chemical nickel-plated spool
- NBR seals

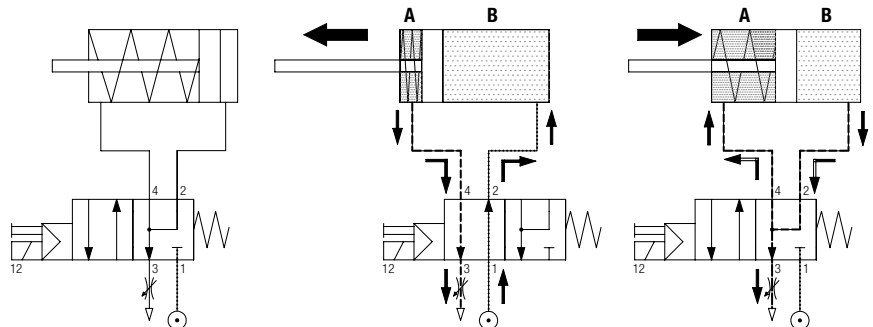
		1/4
	THREADED	G 1/4 - NPTF 1/4
	6 bar FLOW RATE with Δp 1 bar	1200 NI/min
	OPERATING PRESSURE	0 ÷ 10 bar 0 ÷ 145 psi
	PRESSURE DRIVE	Monostable 2 ÷ 10 bar 29 ÷ 145 psi
		Bistable 1 ÷ 10 bar 14.5 ÷ 145 psi
	TEMPERATURE	min -10 °C 14 °F
		max +60 °C 140 °F

Series	Actuation	Reactuation	Function	Size	Thread	
<b>0 8 V</b>	<b>P</b> P = Pneumatic	<b>0</b> 0 = Monostable spring return 1 = Bistable	<b>4</b> 4 = 4/2 5 = 5/2	<b>NC</b> NC = Normally closed 00 = Function not provided	<b>0 3</b> 03 = 1/4	 = G N = NPTF



**Schematic diagram of the valve NAMUR 4 / 2**

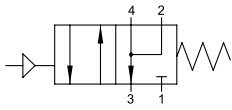
To prevent the return phase of the external dirty air enters the chamber in the cylinder, the air escaping from the chamber B is routed to the same room.





**4/2**

**SINGLE AIR PILOT - SPRING RETURN**

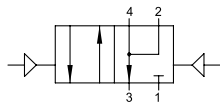


Part No.	Function	Size	Pack.
<b>08V P0 4 NC 03</b>	4/2 <b>NC</b>	G 1/4	1

Part No.	Function	Size	Pack.
<b>08V P0 4 NC 03 N</b>	4/2 <b>NC</b>	NPTF 1/4	1

**4/2**

**DOUBLE AIR PILOT**

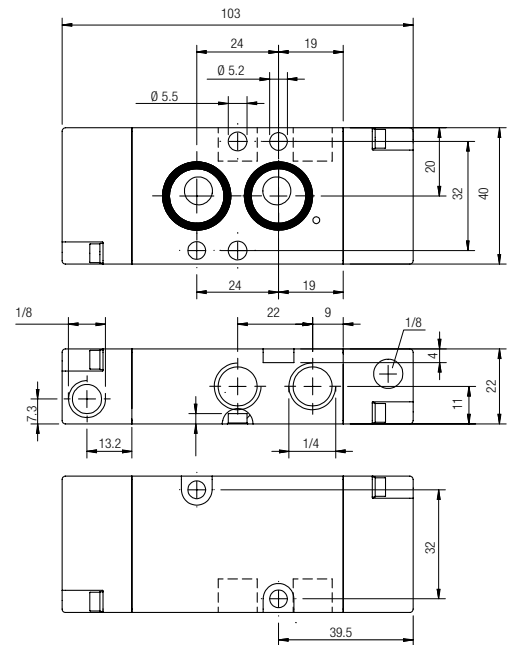
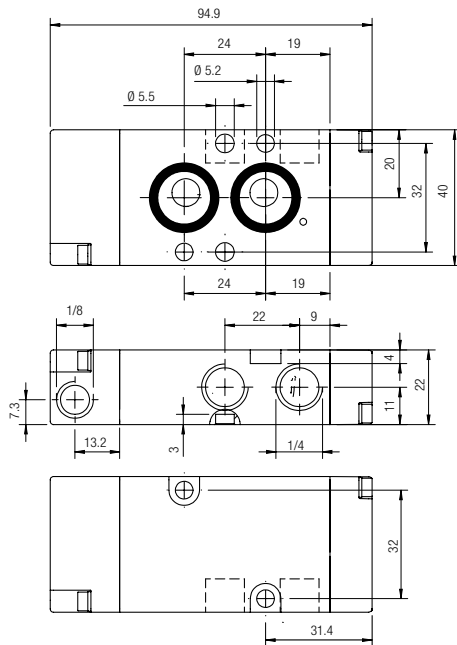


Part No.	Function	Size	Pack.
<b>08V P1 4 00 03</b>	4/2	G 1/4	1

Part No.	Function	Size	Pack.
<b>08V P1 4 00 03 N</b>	4/2	NPTF 1/4	1

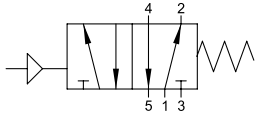
**08V P0 4 NC 03 08V P0 4 NC 03 N**

**08V P1 4 00 03 08V P1 4 00 03 N**



**5/2**

**SINGLE AIR PILOT - SPRING RETURN**

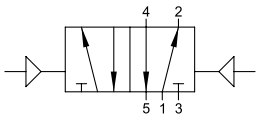


Part No.	Function	Size	Pack.
<b>08V P0 5 00 03</b>	5/2	G 1/4	1

Part No.	Function	Size	Pack.
<b>08V P0 5 00 03 N</b>	5/2	NPTF 1/4	1

**5/2**

**DOUBLE AIR PILOT**

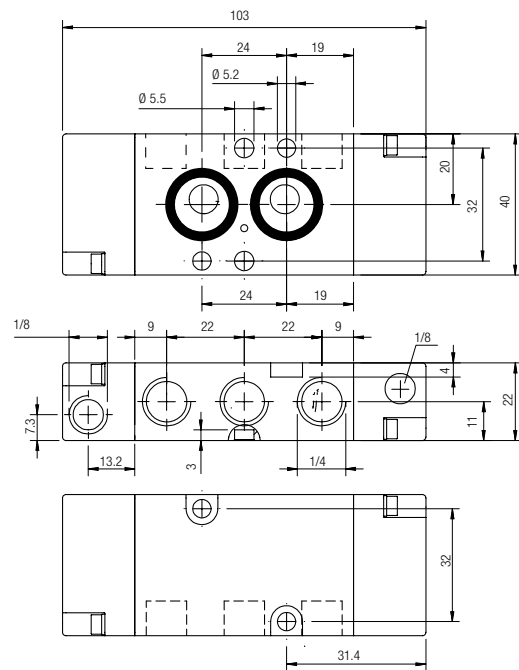
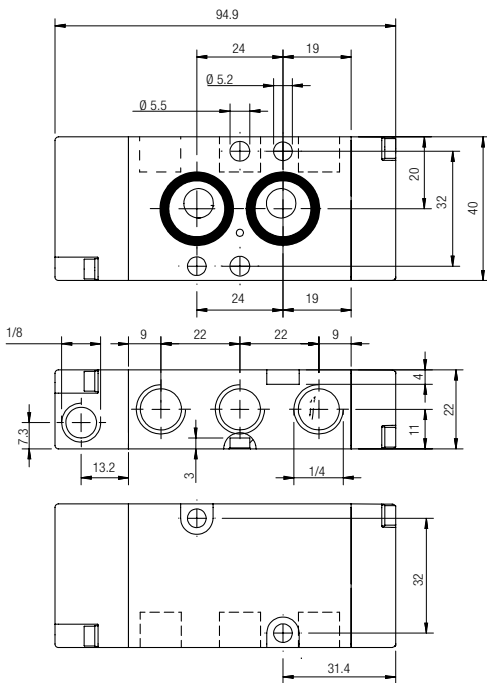


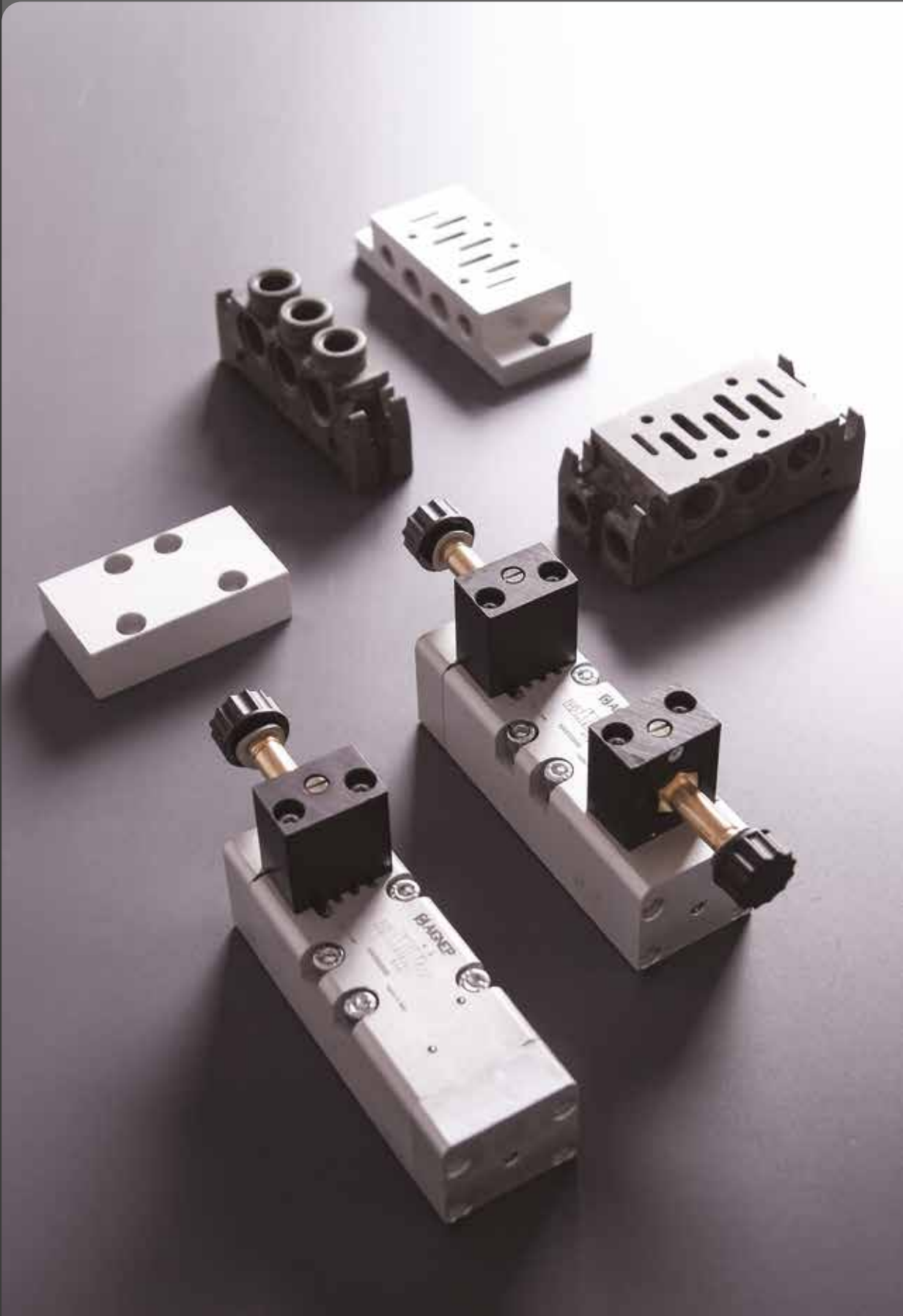
Part No.	Function	Size	Pack.
<b>08V P1 5 00 03</b>	5/2	G 1/4	1

Part No.	Function	Size	Pack.
<b>08V P1 5 00 03 N</b>	5/2	NPTF 1/4	1

**08V P0 5 00 03 08V P0 5 00 03 N**

**08V P1 5 00 03 08V P1 5 00 03 N**





**TECHNICAL CHARACTERISTICS**



Reference Standard

- 1907/2006  
**REACH** ✓
- 2011/65/CE  
**RoHS** ✓
- PED  
2014/68/UE
- ISO 5599  
SIZE 1**



Component Parts and Materials

- Anodised aluminium body
- Nickel-plated spool
- NBR seals

	6 bar FLOW RATE with Δp 1 bar		1100 NI/min
	OPERATING PRESSURE	Monostable	2.5 ÷ 10 bar 36.2 ÷ 145 psi
		Bistable	1 ÷ 10 bar 14.5 ÷ 145 psi
	TEMPERATURE	min	-10 °C 14 °F
		max	+60 °C 140 °F
	MINIMUM POWER		3W - 5VA
	MANUAL CONTROL		Two stable positions
	RESPONSE TIME	Monostable	<b>TRA</b> = 24 ms
			<b>TRR</b> = 50 ms
		Bistable	<b>TRA=TRR</b> = 80 ms

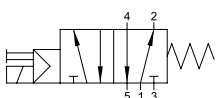
**TRA** = Response time with energised coil

**TRR** = Response time with deenergised coil

Series	Actuation	Reactuation	Ways	Function
<b>1 0 V</b>	<b>S</b> S = Solenoid	<b>0</b> 0 = Monostable spring return 1 = Bistable	<b>7</b> 5 = 5/2 7 = 5/3	<b>CC</b> CC = Normally closed <b>OC</b> = Normally exhausted <b>PC</b> = Normally pressurized <b>00</b> = Function not provided

**5/2**

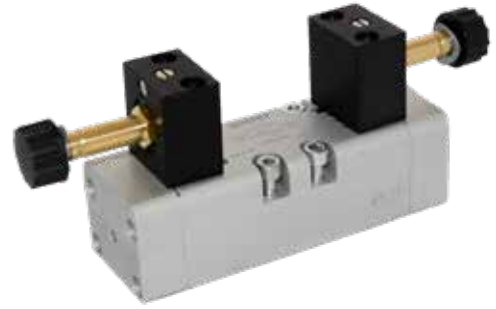
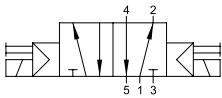
MONOSTABLE SPRING RETURN



Part No.	Ways	Pack.
<b>10V S0 5 00 00</b>	5/2	1

**5/2**

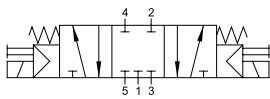
TWO STABLE POSITIONS



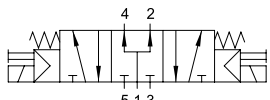
Part No.	Ways	Pack.
10V S1 5 00 00	5/2	1

**5/3**

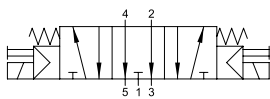
MONOSTABLE SPRING RETURN



CC



PC



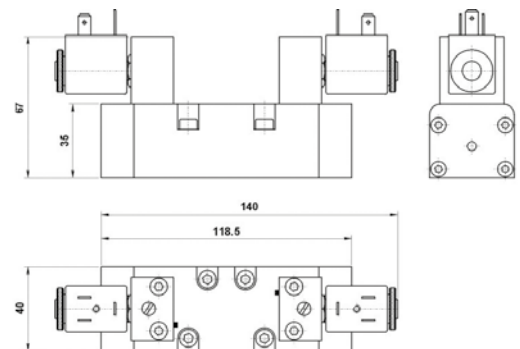
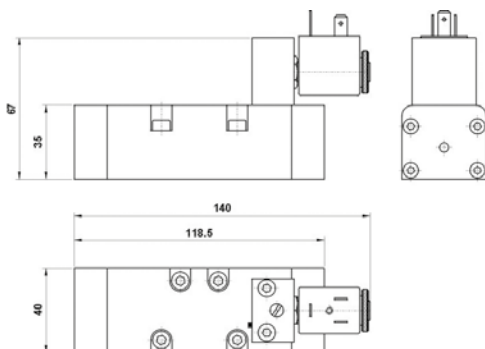
OC



Part No.	Ways	Function	Pack.
10V S0 7 CC 00	5/3	CC	1
10V S0 7 OC 00	5/3	OC	1
10V S0 7 PC 00	5/3	PC	1

10V S0 5 00 00

10V S1 5 00 00 10V S0 7 OC 00  
10V S0 7 CC 00 10V S0 7 PC 00



All the bases are supplied with screws and seals to secure the correct assembly.

**FRONT TERMINAL**



Part No.	Pack.
<b>10V B1 0 00 00</b>	2

**MODULAR BASE**



Part No.	Pack.
<b>10V B3 0 00 00</b>	1

**INDIVIDUAL BASE**



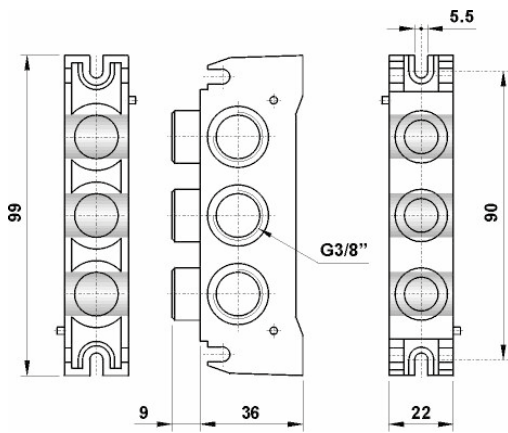
Part No.	Pack.
<b>10V B5 0 00 00</b>	1

**CLOSING PLATE**

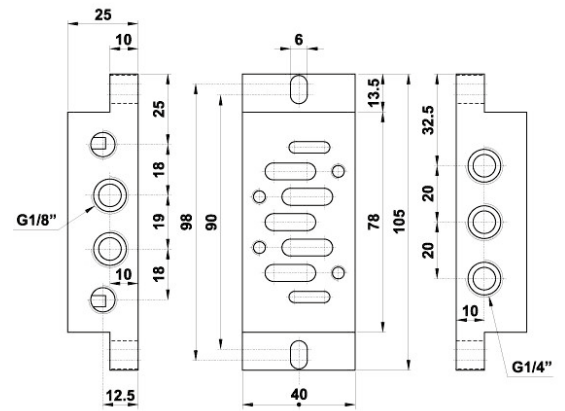


Part No.	Pack.
<b>10V B9 0 00 00</b>	1

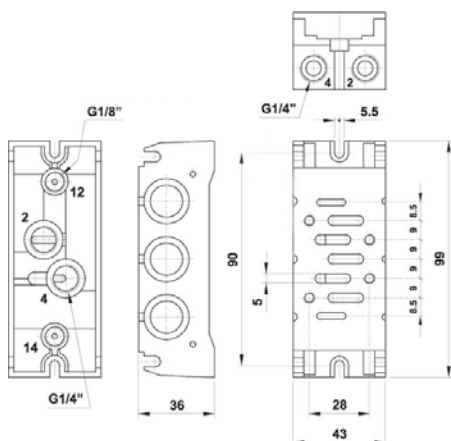
**10V B1 0 00 00**



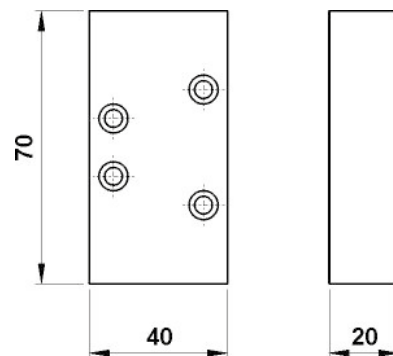
**10V B5 0 00 00**



**10V B3 0 00 00**



**10V B9 0 00 00**





**TECHNICAL CHARACTERISTICS**



**Reference Standard**

- 1907/2006  
**REACH** ✓
- 2011/65/CE  
**RoHS** ✓
- PED  
2014/68/UE
- ISO 5599  
SIZE 2



**Component Parts and Materials**

- Anodised aluminium body
- Nickel-plated spool
- NBR seals

	6 bar FLOW RATE with Δp 1 bar	2500 NI/min
	OPERATING PRESSURE	Monostable 2.5 ÷ 10 bar 36.2 ÷ 145 psi
		Bistable 1 ÷ 10 bar 14.5 ÷ 145 psi
	TEMPERATURE	min -10 °C 14 °F
		max +60 °C 140 °F
	MINIMUM POWER	3W - 5VA
	MANUAL CONTROL	Two stable positions
	RESPONSE TIME	Monostable <b>TRA</b> = 35 ms
		<b>TRR</b> = 60 ms
		Bistable <b>TRA=TRR</b> = 90 ms

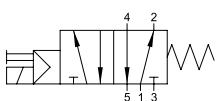
**TRA** = Response time with energised coil

**TRR** = Response time with deenergised coil

Series	Actuation	Reactuation	Ways	Function
<b>1 1 V</b>	<b>S</b> S = Solenoid	<b>0</b> 0 = Monostable spring return 1 = Bistable	<b>7</b> 5 = 5/2 7 = 5/3	<b>CC</b> = Normally closed <b>OC</b> = Normally exhausted <b>PC</b> = Normally pressurized <b>00</b> = Function not provided

**5/2**

**MONOSTABLE SPRING RETURN**

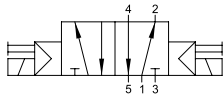


Part No.	Ways	Pack.
<b>11V S0 5 00 00</b>	5/2	1



**5/2**

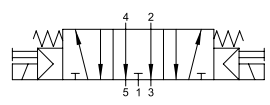
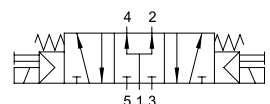
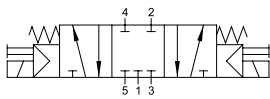
TWO STABLE POSITIONS



Part No.	Ways	Pack.
11V S1 5 00 00	5/2	1

**5/3**

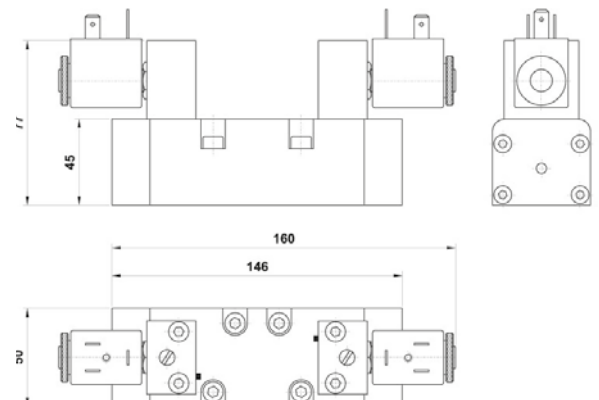
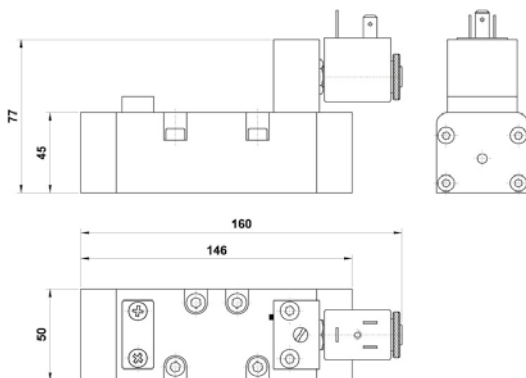
MONOSTABLE SPRING RETURN



Part No.	Ways	Function	Pack.
11V S0 7 CC 00	5/3	CC	1
11V S0 7 OC 00	5/3	OC	1
11V S0 7 PC 00	5/3	PC	1

11V S0 5 00 00

11V S1 5 00 00 11V S0 7 OC 00  
11V S0 7 CC 00 11V S0 7 PC 00



All the bases are supplied with screws and seals to secure the correct assembly.

**FRONT TERMINAL**



Part No.	Pack.
<b>11V B1 0 00 00</b>	2

**MODULAR BASE**



Part No.	Pack.
<b>11V B3 0 00 00</b>	1

**INDIVIDUAL BASE**



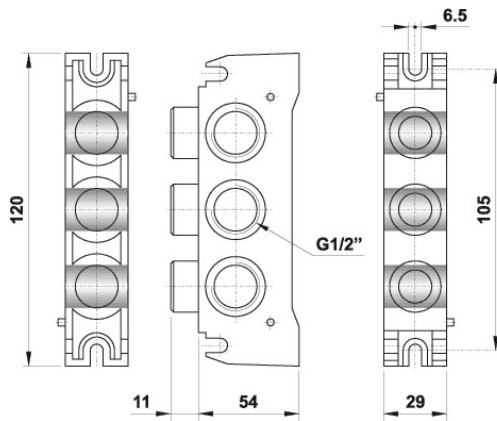
Part No.	Pack.
<b>11V B5 0 00 00</b>	1

**CLOSING PLATE**

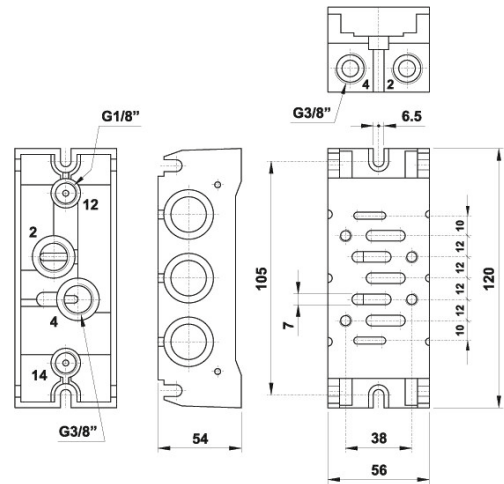


Part No.	Pack.
<b>11V B9 0 00 00</b>	1

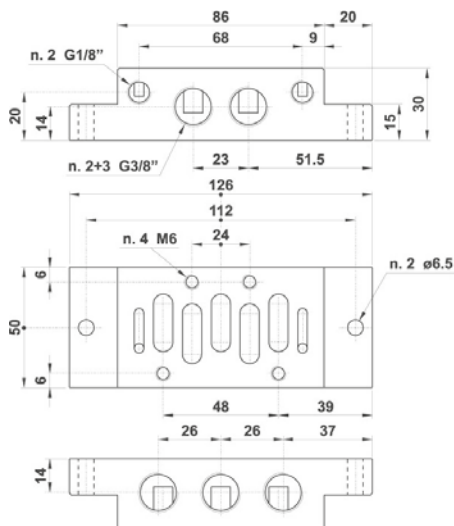
**11V B1 0 00 00**



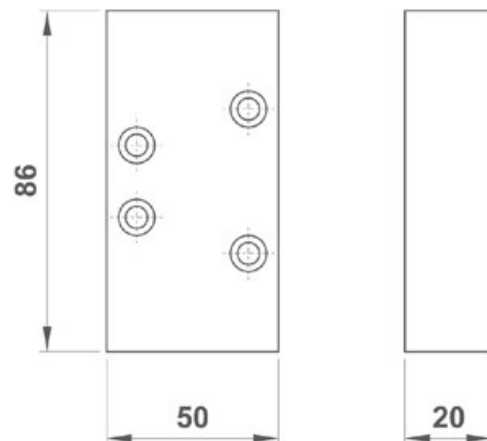
**11V B3 0 00 00**



**11V B5 0 00 00**



**11V B9 0 00 00**



**Directive 2014/34/UE (ATEX)**

The valves and accessories of the Series 01VP - 01VT - 01VL - 01W - 01VN - 01VBxx - 08VP - 01VA - 01VS - 07VS - 07VB - 08VS show the following features:

**II 2 GD c T6 -10°C<Tamb<60°C**

**II 2 GD:** Device for surface installations (II = do not use device in mining) with presence of gas, vapors of powders of category 2 (equipment with high safety factor since it excludes danger of explosion, even in case of damage; it can be used in areas with possible explosive environments).

**c:** Devices are constructively safe

**T6 - 10°C<Tamb<60°C:** Surface temperature class and additional marking for T usage environment.





**TECHNICKÁ INŠPEKCIA, a.s.**  
SLOVENSKÁ REPUBLIKA



**CEOC**  
INTERNATIONAL

**ACKNOWLEDGEMENT OF RECEIPT**  
no. 1175/5/2015

Technická inšpekcia, a. s.,  
Trnavská cesta 56, 821 01 Bratislava  
Notified body: 1354,

**confirms, that Technical File Documentation**  
prepared by

**Aignep S.p.A.**  
Via Don G. Bazzoli 34, 25070 Bione (BS), Italy

has been received and stored according to the Directive 94/9/EC (ATEX) on equipment and protective systems intended for use in potentially explosive atmospheres

Scope of Ex Equipment:

**Pneumatic, manual puller/lever and servo-piloted valves, with related accessories  
Models 01VP, 01VT, 01VL, 01VV, 01VN, 01VBxx, 08VP.  
Solenoid assisted and pilot valves, single or multiple solenoid valves on manifold with manual override and individual or multiple bases for miniature ones  
Models 01VA, 01VS, 07VS, 07VB, 08VS**

Classification:  II 2 GD c T6 -10°C<Tamb<60°C

**Technical File Documentation**

Doc. no.	Issue
Technical Book according to 94/9/EC	20/3/2015 Rev.0

Technical documentation will be stored for 10 years until July 22<sup>nd</sup>, 2025.

Bratislava, July 22<sup>nd</sup>, 2015



On behalf of Technická inšpekcia, a.s.

  
Ing. Dušan Konický  
General Director

**301018**  
PDOKA1-41

See Instructions and Certificate at:  
**WWW.AIGNEP.COM**

