

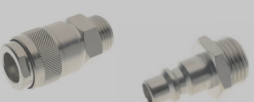





Prese ad Innesto Rapido - Quick Couplings - Schnellverschluss Kupplungen - Coupleurs Automatiques - Enchufes Rápidos - Conexões de Engate Rápido

<p>SERIE UNI ISO 6150 A-6</p>  <p><b>Serie 100</b> Pag. 15.7 - 15.10</p>	<p>SERIE MIGNON <b>New</b></p>  <p><b>Serie 110</b> Pag. 15.11 - 15.16</p>	<p>SERIE UNI ISO 6150 B-12</p>  <p><b>Serie 120</b> Pag. 15.17 - 15.22</p>	<p>ITALIAN PROFILE</p>  <p><b>Serie 120</b> Pag. 15.23 - 15.28</p>
<p>SERIE UNI ISO 6150 B-15</p>  <p><b>Serie 130</b> Pag. 15.29 - 15.33</p>	<p>SERIE UNI ISO 6150 C-10</p>  <p><b>Serie 140</b> Pag. 15.34 - 15.39</p>	<p>EUROPEAN PROFILE</p>  <p><b>Serie 160</b> Pag. 15.40 - 15.45</p>	<p>SWISS PROFILE</p>  <p><b>Serie 170</b> Pag. 15.46 - 15.50</p>
<p>MIGNON PROFILE <b>New</b></p>  <p><b>Serie 180</b> Pag. 15.51 - 15.54</p>	<p>MULTISOCKET <b>New</b></p>  <p><b>Serie 190 - 63190</b> Pag. 15.55 - 15.61</p>	<p>JAPANESE PROFILE</p>  <p><b>Serie 400</b> Pag. 15.62 - 15.64</p>	<p><b>Serie 700</b> Pag. 15.65 - 15.67</p>
<p>SERIE UNI ISO 6150 B-17</p>  <p><b>Serie 710</b> Pag. 15.68 - 15.70</p>	<p>B-SOCKET EUROPEAN</p>  <p><b>Serie 720</b> Pag. 15.71 - 15.74</p>	<p>EUROPEAN PROFILE <b>New</b></p>  <p><b>Serie 730</b> Pag. 15.75 - 15.80</p>	<p>EUROPEAN PROFILE <b>New</b></p>  <p><b>Serie 740</b> Pag. 15.81 - 15.83</p>

Prese di Sicurezza ad Innesto Rapido - Safety Quick Couplings - Kupplungen Sicherheit - Coupleurs de Sécurité - Enchufes de Seguridad - Conexões de Segurança

<p>SERIE UNI ISO 6150 B-12</p>  <p><b>Serie 620</b> Pag. 15.85 - 15.88</p>	<p><b>Serie 650</b> Pag. 15.89 - 15.90</p>	<p>EUROPEAN PROFILE</p>  <p><b>Serie 660</b> Pag. 15.91 - 15.92</p>	<p>SWISS PROFILE</p>  <p><b>Serie 670</b> Pag. 15.93 - 15.94</p>
<p>SERIE UNI ISO 6150 B-12</p>  <p><b>Serie 0B120</b> Pag. 15.97 - 15.99</p>	<p>SERIE UNI ISO 6150 C-10</p>  <p><b>Serie 0B140</b> Pag. 15.100 - 15.102</p>	<p>EUROPEAN PROFILE <b>New</b></p>  <p><b>Serie 0B160</b> Pag. 15.103 - 15.105</p>	

Giunti ad Innesto Rapido per Raffreddamento Stampi - Quick Couplings for Molding Cooling - Schnellkupplungen Für Spritzgussanwendungen - Coupleurs pour Moules D'injection - Enchufes Rápidos para Refrigeración de Moldes - Conexões de Engate Rápido para Resfriamento de Moldes

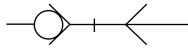
<p>FRENCH PROFILE DN 8 - DN 12</p>  <p><b>Series 410 - 420 - 510 - 520</b> Pag. 15.104 - 15.110</p>	<p>INTERNATIONAL PROFILE DN 6 - DN 9</p>  <p><b>Series 430 - 440 - 530 - 540</b> Pag. 15.112 - 15.119</p>	<p>EUROPEAN PROFILE DN 6 - DN 9</p>  <p><b>Series 460 - 470 - 560 - 570</b> Pag. 15.120 - 15.127</p>	<p><b>6049</b> Pag. 15.128</p> 
--	--	--	--

Pistole di Soffiaggio - Blow Guns - Blaspistolen - Soufflettes - Pistolas Sopladoras - Pistola de Ar

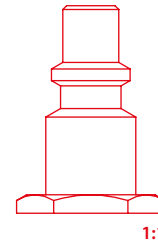
 <p><b>Series 360</b> Pag. 15.130 - 15.132</p>	 <p><b>Series 300</b> Pag. 15.133 - 15.135</p>	<p><b>Spare Parts</b> Pag. 15.136</p> 	 <p><b>Series 340</b> Pag. 15.137</p>
---	---	--	--

Alignep si riserva il diritto di variare modelli e ingombri senza preavviso - Alignep reserves the right to vary models and dimensions without notice - Alignep behält sich das Recht vor, Daten ohne Ankündigung zu ändern - Alignep se reserva el derecho de modificar modelos y dimensiones sin previo aviso - Alignep reserva-se o direito de alterar os modelos e dimensões sem prévio aviso

DN  
5 mm



ITALIAN



**651**

**PRESA MASCHIO**

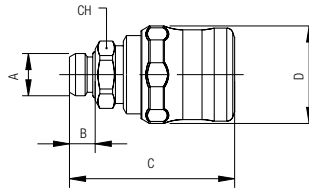
MALE SOCKET

VERSCHLUSS-KUPPLUNG MIT AUSSENGEWINDE

COUPLEUR MÂLE

ENCHUFE MACHO

SOQUETE COM ROSCA MACHO



Code	A	B	C	D	CH	Pack.
00651 00 001	1/4	8	52.5	30.5	19	10
00651 00 002	3/8	9	53	30.5	20	10
00651 00 003	1/2	10	54	30.5	25	10

**652**

**PRESA FEMMINA**

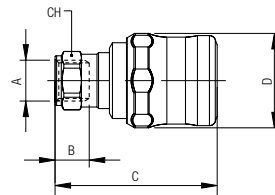
FEMALE SOCKET

VERSCHLUSS-KUPPLUNG MIT INNENGEWINDE

COUPLEUR FEMELLE

ENCHUFE HEMBRA

SOQUETE COM ROSCA FÊMEA



Code	A	B	C	D	CH	Pack.
00652 00 001	1/4	11	53	30.5	17	10
00652 00 002	3/8	12	54	30.5	20	10
00652 00 003	1/2	15	57	30.5	24	10

**654**

**PRESA A CALZAMENTO**

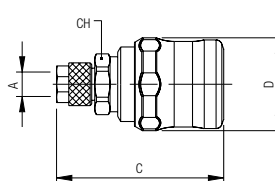
COMPRESSION SOCKET

VERSCHLUSS-KUPPLUNG MIT ÜBERWURFVERSCHRAUBUNG

COUPLEUR RACCORD À COIFFE

ENCHUFE TUBO

SOQUETE COM CONEXÃO PUSH-ON



Code	A	C	D	CH	Pack.
00654 00 001	6/4	56	30.5	18	10
00654 00 002	8/6	55.5	30.5	18	10
00654 00 005	10/6.5	58.5	30.5	18	10
00654 00 003	10/8	57.5	30.5	18	10
00654 00 006	12/8	59	30.5	18	10
00654 00 004	12/10	58	30.5	18	10

## 655

### PRESA CON PORTAGOMMA A RESCA

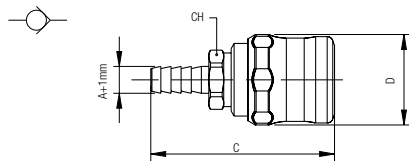
BARBED SOCKET

VERSCHLUSS-KUPPLUNG MIT SCHLAUCHTÜLLE

COUPLEUR À DOUILLE ANNELÉE POUR TUBE

ENCHUFE ESPIGA

SOQUETE COM ESPIGAO PARA MANGUEIRA DE BORRACHA



Code	A	C	D	CH	Pack.
00655 00 001	6	62.5	30.5	18	10
00655 00 002	8	62.5	30.5	18	10
00655 00 003	10	62.5	30.5	18	10
00655 00 004	12	62.5	30.5	18	10

## 251AC

### INNESTO IN ACCIAIO MASCHIO

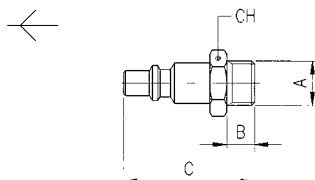
STEEL MALE PLUG

STECKER MIT AUSSENGEWINDE AUS STAHL

EMBOUT MÂLE EN ACIER

ADAPTADOR EN ACERO MACHO

PLUG EM AÇO COM ROSCA MACHO



Code	A	B	C	CH	Pack.
251AC 00 51 03 ZI	1/4	8	38	17	10
251AC 00 51 04 ZI	3/8	9	39	19	10
251AC 00 51 05 ZI	1/2	10	40.5	24	10

**Acciaio Indurito**  
Hardened Steel  
Gehärtetem Stahl  
Acier Trempé  
Acero Curtido  
Aço Endurecido

## 252AC

### INNESTO IN ACCIAIO FEMMINA

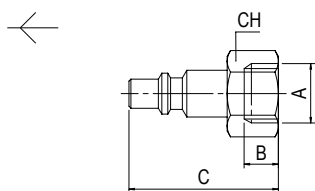
STEEL FEMALE PLUG

STECKER MIT INNENGEWINDE AUS STAHL

EMBOUT FEMELLE EN ACIER

ADAPTADOR EN ACERO HEMBRA

PLUG EM AÇO COM ROSCA FÊMEA



Code	A	B	C	CH	Pack.
252AC 00 51 03 ZI	1/4	11	38	17	10
252AC 00 51 04 ZI	3/8	11.5	38.5	19	10
252AC 00 51 05 ZI	1/2	14	41	24	10

**Acciaio Indurito**  
Hardened Steel  
Gehärtetem Stahl  
Acier Trempé  
Acero Curtido  
Aço Endurecido

## 255AC

### INNESTO IN ACCIAIO CON PORTAGOMMA A RESCA

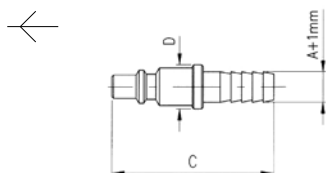
STEEL BARBED PLUG

STECKER MIT SCHLAUCHTÜLLE AUS STAHL

EMBOUT À DOUILLE ANNELÉE POUR TUBE EN ACIER

ADAPTADOR EN ACERO ESPIGA

PLUG EM AÇO COM ESPIGAO PARA TUBO DE BORRACHA



Code	A	C	D	Pack.
255AC 00 51 X4 ZI	6	44.5	12	10
255AC 00 51 X7 ZI	8	44.5	12	10
255AC 00 51 X9 ZI	10	47.5	14	10
255AC 00 51 Y1 ZI	12	47.5	16	10

**Acciaio Indurito**  
Hardened Steel  
Gehärtetem Stahl  
Acier Trempé  
Acero Curtido  
Aço Endurecido