

89 Series

 89000 Pg. 1.5	 89000 Pg. 1.5	 89010 Pg. 1.5	 89110 Pg. 1.5	 89110 Pg. 1.5	 89210 Pg. 1.6	 89210 Pg. 1.6	 89222 Pg. 1.6	 89222 Pg. 1.6
 89030 Pg. 1.7	 89055 Pg. 1.7	 89105 Pg. 1.7	 89040 Pg. 1.7	 89050 Pg. 1.7	 89130 Pg. 1.8	 89230 Pg. 1.8	 89310 Pg. 1.8	 89500 Pg. 1.8
 88610B Pg. 1.9	 89700 Pg. 1.9	 50980 Pg. 1.9	 50991 Pg. 1.9	 50006 Pg. 1.9				

METALLIC PUSH-TO-CONNECT FITTINGS FOR INCH TUBE

89 Series



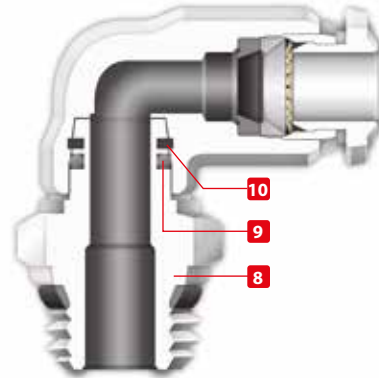
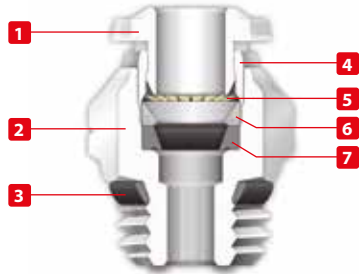


TECHNICAL CHARACTERISTICS



Reference Standard

- 1907/2006
REACH ✓
- 2011/65/CE
RoHS ✓
- PED
2014/68/UE
- ISO
14743:2004
- SILICON
FREE



Pressure Rating

Vacuum ~ 290 PSI
-0.99 bar ~ 20 bar
-0.099 MPa ~ 2.0 MPa



Temperatures Rating

NBR	EPDM on request	FKM on request
-4° F ~ 176° F	-40° F ~ 266° F	5° F ~ 266° F
-20° C ~ 80° C	-40° C ~ 130° C	-15° C ~ 130° C



Component Parts and Materials

- 1 Metallic Release Collet
- 2 Nickel Plated Brass Body
- 3 NBR Thread Seal
- 4 Nickel Plated Brass Sleeve
- 5 303 Stainless Steel Gripper
- 6 Technopolymer Safety Ring
- 7 NBR Molded Seal
- 8 Nickel Plated Thread Brass Body
- 9 NBR Seal
- 10 Safety Ring



Media

- Compressed Air
- Vacuum
- Water
- Steam (FKM required)



Tubing Compatibility

- Nylon 6 - 11 -12
- Polyethylene
- Polyurethane ("98 Shore A for best result)
- PTFE
- FEP



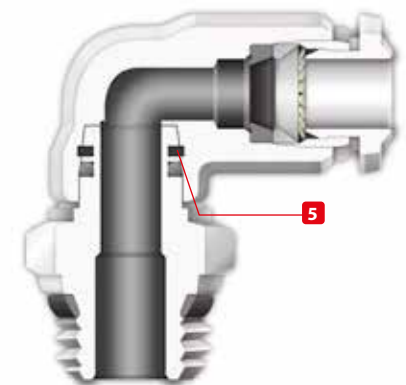
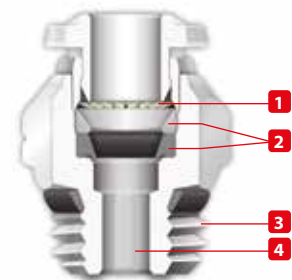
Applications

- Pneumatic Automation
- Automotive
- Textile, Packaging
- Compressed Air Circuit
- Vacuum



Advantages:

- 1 The 303 Stainless Steel gripper ensures a tight clamp for tubes of any material without damaging the tube's surface. The secure connection between the tube and the fitting will hold up to severe conditions such as impact and vibrations.
- 2 The shape of the safety ring and the molded seal perfectly seal off the tube, creating a vacuum.
- 3 Series with several types of threads:
SWIFTFIT
NPTF
UNF
- 4 All straight fittings can be tightened with an Allen wrench because of our internal hex design. This enables the end user to tighten the fitting in spaces too small for an openend wrench.
- 5 Our rotating Swivel Elbow fittings are equipped with a safety ring that enables the fitting to rotate without losing a tight seal.



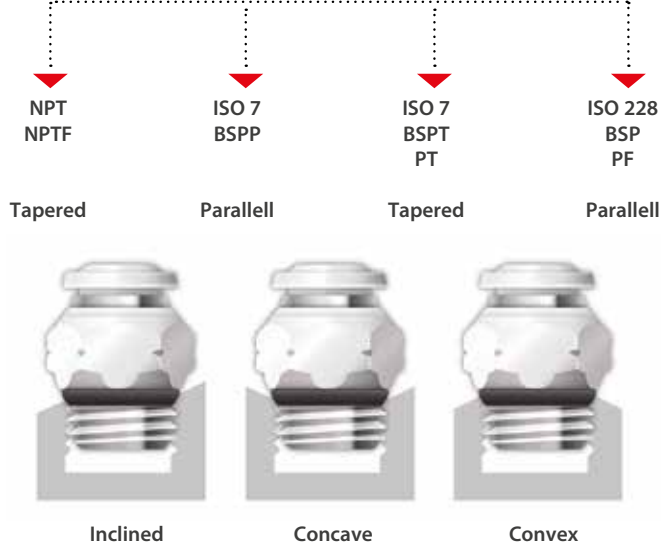


THREADS & ADVANTAGES



SWIFFFIT
Universal thread

One fitting... Endless possibilities



Our **SWIFFFIT** universal fittings also work on non-flat surfaces without compromising an air-tight seal.

The **SWIFFFIT** Universal Thread has been designed to offer the following advantages to the end users:

- Reduced overall length
- Smaller hex dimensions compared to parallel threads
- Fits with various parallel and tapered threads
- All **SWIFFFIT** fittings have been equipped with threads and an NBR thread seal that will universally connect to all thread types.

Torque Specifications

Recommended Torque		
Thread Size	Min.	Max.
1/8	5 Nm	7 Nm
1/4	5 Nm	7 Nm
3/8	5 Nm	7 Nm
1/2	5 Nm	7 Nm



UNF Threads



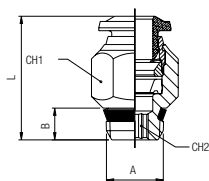
The **UNF** Thread has been designed to offer the following advantages to the end users:

- Standard USA design
- Designed for use in UNF connections with an integrated NBR o-ring that provides a perfect seal
- Completely reusable

Torque Specifications

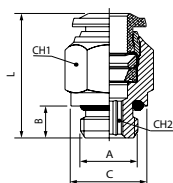
Recommended Torque		
Thread Size	Min.	Breaking torque
10/32	0.8 Nm	3.2 Nm

89000
STRAIGHT MALE



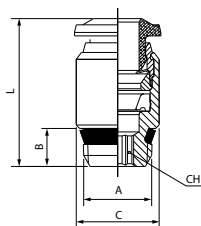
* For part numbers with 10-32 threads

UNF



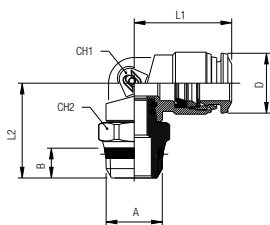
Part No.	Tube	A	B	C	L	CH1	CH2
*89000-02-32	1/8	10/32	.197 (5)	.310 (8)	.748 (19)	.315 (8)	.079 (2)
89000-02-02	1/8	1/8	.217 (5,5)	-	.650 (16,5)	.433 (11)	.079 (2)
89000-02-04	1/8	1/4	.276 (7)	-	.728 (18,5)	.551 (14)	.079 (2)
*89000-53-32	5/32 (4)	10/32	.197 (5)	.310 (8)	.827 (21)	.394 (10)	.079 (2)
89000-53-02	5/32 (4)	1/8	.217 (5,5)	-	.709 (18)	.433 (11)	.118 (3)
89000-53-04	5/32 (4)	1/4	.276 (7)	-	.748 (19)	.551 (14)	.118 (3)
*89000-04-32	1/4	10/32	.197 (5)	.390 (10)	.966 (24,5)	.512 (13)	.079 (2)
89000-04-02	1/4	1/8	.217 (5,5)	-	.846 (21,5)	.512 (13)	.157 (4)
89000-04-04	1/4	1/4	.276 (7)	-	.807 (20,5)	.551 (14)	.157 (4)
89000-04-06	1/4	3/8	.295 (7,5)	-	.905 (23)	.669 (17)	.157 (4)
89000-05-02	5/16 (8)	1/8	.217 (5,5)	-	.965 (24,5)	.551 (14)	.197 (5)
89000-05-04	5/16 (8)	1/4	.276 (7)	-	.866 (22)	.551 (14)	.236 (6)
89000-05-06	5/16 (8)	3/8	.295 (7,5)	-	.906 (23)	.669 (17)	.236 (6)
89000-05-08	5/16 (8)	1/2	.354 (9)	-	.925 (23,5)	.827 (21)	.236 (6)
89000-06-02	3/8	1/8	.217 (5,5)	-	1.082 (27,5)	.669 (17)	.197 (5)
89000-06-04	3/8	1/4	.276 (7)	-	1.082 (27,5)	.669 (17)	.276 (7)
89000-06-06	3/8	3/8	.295 (7,5)	-	1.023 (25,5)	.669 (17)	.276 (7)
89000-06-08	3/8	1/2	.354 (9)	-	1.023 (25,5)	.827 (21)	.276 (7)
89000-08-02	1/2	1/8	.217 (5,5)	-	1.260 (32)	.787 (20)	.197 (5)
89000-08-04	1/2	1/4	.276 (7)	-	1.222 (31)	.787 (20)	.276 (7)
89000-08-06	1/2	3/8	.295 (7,5)	-	1.222 (31)	.787 (20)	.354 (9)
89000-08-08	1/2	1/2	.354 (9)	-	1.222 (31)	.827 (21)	.394 (10)

89010
STRAIGHT MALE WITH INTERNAL HEX



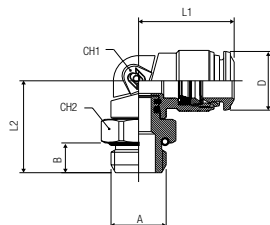
Part No.	Tube	A	B	C	L	CH
89010-53-02	5/32 (4)	1/8	.217 (5,5)	.394 (10)	.748 (19)	.118 (3)
89010-05-02	5/16 (8)	1/8	.217 (5,5)	.551 (14)	1.004 (25,5)	.197 (5)
89010-05-04	5/16 (8)	1/4	.276 (7)	.551 (14)	.984 (25)	.236 (6)

89110
SWIVEL ELBOW



* For part numbers with 10-32 threads

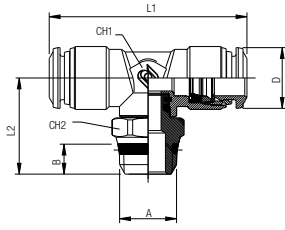
UNF



Part No.	Tube	A	B	L1	L2	CH1	CH2	D
*89110-02-32	1/8	10/32	.177 (4,5)	.630 (16)	.689 (17,5)	.354 (9)	.315 (8)	.394 (10)
89110-02-02	1/8	1/8	.217 (5,5)	.650 (16,5)	.768 (19,5)	.354 (9)	.511 (13)	.394 (10)
89110-02-04	1/8	1/4	.276 (7)	.650 (16,5)	.827 (21)	.354 (9)	.591 (15)	.394 (10)
*89110-53-32	5/32 (4)	10/32	.177 (4,5)	.689 (17,5)	.689 (17,5)	.354 (9)	.315 (8)	.394 (10)
89110-53-02	5/32 (4)	1/8	.217 (5,5)	.708 (18)	.768 (19,5)	.354 (9)	.511 (13)	.394 (10)
89110-53-04	5/32 (4)	1/4	.276 (7)	.708 (18)	.827 (21)	.354 (9)	.591 (15)	.394 (10)
*89110-04-32	1/4	10/32	.177 (4,5)	.827 (21)	.768 (19,5)	.433 (11)	.433 (11)	.492 (12,5)
89110-04-02	1/4	1/8	.217 (5,5)	.827 (21)	.846 (21,5)	.433 (11)	.511 (13)	.493 (12,5)
89110-04-04	1/4	1/4	.276 (7)	.827 (21)	.906 (23)	.433 (11)	.591 (15)	.493 (12,5)
89110-04-06	1/4	3/8	.295 (7,5)	.827 (21)	.926 (23,5)	.433 (11)	.669 (17)	.493 (12,5)
89110-05-02	5/16 (8)	1/8	.217 (5,5)	.886 (22,5)	.886 (22,5)	.472 (12)	.511 (13)	.571 (14,5)
89110-05-04	5/16 (8)	1/4	.276 (7)	.886 (22,5)	.886 (22,5)	.472 (12)	.591 (15)	.571 (14,5)
89110-05-06	5/16 (8)	3/8	.295 (7,5)	.886 (22,5)	.906 (23)	.472 (12)	.669 (17)	.571 (14,5)
89100-05-08	5/16 (8)	1/2	.354 (9)	.886 (22,5)	1.004 (25,5)	.472 (12)	.511 (13)	.571 (14,5)
89110-06-02	3/8	1/8	.217 (5,5)	1.043 (26,5)	.945 (24)	.551 (14)	.551 (14)	.669 (17,5)
89110-06-04	3/8	1/4	.276 (7)	1.043 (26,5)	1.043 (26,5)	.551 (14)	.630 (16)	.669 (17,5)
89110-06-06	3/8	3/8	.295 (7,5)	1.043 (26,5)	.965 (24,5)	.551 (14)	.669 (17)	.669 (17,5)
89110-06-08	3/8	1/2	.354 (9)	1.043 (26,5)	1.063 (27)	.551 (14)	.827 (21)	.669 (17,5)
89110-08-04	1/2	1/4	.276 (7)	1.240 (31,5)	1.130 (28,7)	.630 (16)	.630 (16)	.846 (21,5)
89110-08-06	1/2	3/8	.295 (7,5)	1.240 (31,5)	1.043 (26,5)	.630 (16)	.669 (17)	.846 (21,5)
89110-08-08	1/2	1/2	.354 (9)	1.240 (31,5)	1.142 (29)	.630 (16)	.827 (21)	.846 (21,5)

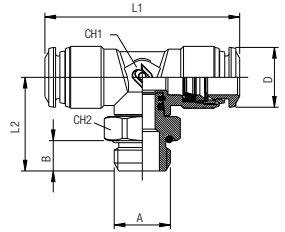
89210

SWIVEL BRANCH TEE



* For part numbers with 10-32 threads

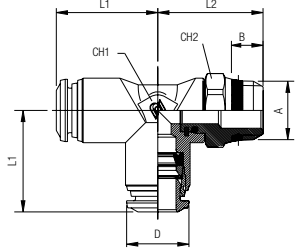
UNF



Part No.	Tube	A	B	L1	L2	CH1	CH2	D
*89210-02-32	1/8	10/32	.157 (4)	1.300 (33)	.670 (17)	.354 (9)	.315 (8)	.394 (10)
89210-02-02	1/8	1/8	.216 (5,5)	1.300 (33)	.669 (17)	.354 (9)	.511 (13)	.394 (10)
89210-02-04	1/8	1/4	.275 (7)	1.300 (33)	.787 (20)	.354 (9)	.591 (15)	.394 (10)
*89210-02-32	5/32 (4)	10/32	.157 (4)	1.300 (33)	.709 (18)	.354 (9)	.315 (8)	.394 (10)
89210-53-02	5/32 (4)	1/8	.216 (5,5)	1.300 (33)	.787 (20)	.354 (9)	.511 (13)	.394 (10)
89210-53-04	5/32 (4)	1/4	.275 (7)	1.300 (33)	.846 (21,5)	.354 (9)	.591 (15)	.394 (10)
*89210-04-32	1/4	10/32	.157 (4)	1.654 (42)	.807 (20,5)	.433 (11)	.433 (11)	.492 (12,5)
89210-04-02	1/4	1/8	.216 (5,5)	1.574 (40)	.787 (20)	.433 (11)	.511 (13)	.493 (12,5)
89210-04-04	1/4	1/4	.275 (7)	1.574 (40)	.846 (21,5)	.433 (11)	.629 (16)	.493 (12,5)
89210-04-06	1/4	3/8	.295 (7,5)	1.574 (40)	.866 (22)	.433 (11)	.669 (17)	.493 (12,5)
89210-05-02	5/16 (8)	1/8	.216 (5,5)	1.772 (45)	1.004 (25,5)	.512 (13)	.511 (13)	.571 (14,5)
89210-05-04	5/16 (8)	1/4	.275 (7)	1.772 (45)	1.004 (25,5)	.512 (13)	.591 (15)	.571 (14,5)
89210-05-06	5/16 (8)	3/8	.295 (7,5)	1.772 (45)	1.024 (26)	.512 (13)	.669 (17)	.571 (14,5)
89210-06-02	3/8	1/8	.216 (5,5)	2.047 (52)	1.043 (26,5)	.551 (14)	.551 (14)	.669 (17,5)
89210-06-04	3/8	1/4	.275 (7)	2.047 (52)	1.141 (29)	.551 (14)	.630 (16)	.669 (17,5)
89210-06-06	3/8	3/8	.295 (7,5)	2.047 (52)	1.062 (27)	.551 (14)	.669 (17)	.669 (17,5)
89210-06-08	3/8	1/2	.354 (9)	2.047 (52)	1.220 (31)	.551 (14)	.827 (21)	.669 (17,5)
89210-08-04	1/2	1/4	.275 (7)	2.402 (61)	1.240 (31,5)	.630 (16)	.630 (16)	.846 (21,5)
89210-08-06	1/2	3/8	.295 (7,5)	2.402 (61)	1.161 (29,5)	.630 (16)	.669 (17)	.846 (21,5)
89210-08-08	1/2	1/2	.354 (9)	2.402 (61)	1.259 (32)	.630 (16)	.827 (21)	.846 (21,5)

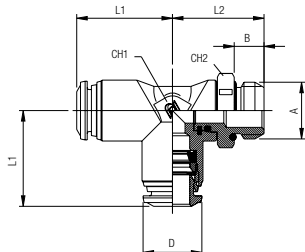
89222

SWIVEL RUN TEE



* For part numbers with 10-32 threads

UNF

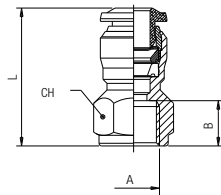


Part No.	Tube	A	B	L1	L2	CH1	CH2	D
*89222-02-32	1/8	10/32	.177 (4,5)	.650 (16,5)	.670 (17)	.354 (9)	.315 (8)	.394 (10)
89222-02-02	1/8	1/8	.216 (5,5)	.650 (16,5)	.728 (18,5)	.354 (9)	.511 (13)	.394 (10)
89222-02-04	1/8	1/4	.334 (7)	.650 (16,5)	.807 (20,5)	.354 (9)	.591 (15)	.394 (10)
*89222-53-32	5/32 (4)	10/32	.177 (4,5)	.670 (17)	.709 (18)	.354 (9)	.315 (8)	.394 (10)
89222-53-02	5/32 (4)	1/8	.216 (5,5)	.649 (17)	.787 (20)	.354 (9)	.511 (13)	.394 (10)
89222-53-04	5/32 (4)	1/4	.275 (7)	.649 (17)	.846 (21,5)	.354 (9)	.591 (15)	.394 (10)
*89222-04-32	1/4	10/32	.177 (4,5)	.827 (21)	.807 (20,5)	.433 (11)	.433 (11)	.492 (12,5)
89222-04-02	1/4	1/8	.216 (5,5)	.846 (21,5)	.787 (20)	.433 (11)	.511 (13)	.493 (12,5)
89222-04-04	1/4	1/4	.275 (7)	.846 (21,5)	.846 (21,5)	.433 (11)	.591 (15)	.493 (12,5)
89222-04-06	1/4	3/8	.295 (7,5)	.846 (21,5)	.866 (22)	.433 (11)	.669 (17)	.493 (12,5)
89222-05-02	5/16 (8)	1/8	.216 (5,5)	.886 (22,5)	.945 (24)	.512 (13)	.511 (13)	.571 (14,5)
89222-05-04	5/16 (8)	1/4	.275 (7)	.886 (22,5)	.945 (24)	.512 (13)	.591 (15)	.571 (14,5)
89222-05-06	5/16 (8)	3/8	.295 (7,5)	.886 (22,5)	1.062 (27)	.512 (13)	.669 (17)	.571 (14,5)
89222-06-02	3/8	1/8	.216 (5,5)	1.062 (27)	1.023 (26)	.551 (14)	.551 (14)	.669 (17,5)
89222-06-04	3/8	1/4	.275 (7)	1.062 (27)	1.043 (26,5)	.551 (14)	.630 (16)	.669 (17,5)
89222-06-06	3/8	3/8	.295 (7,5)	1.062 (27)	1.062 (27)	.551 (14)	.669 (17)	.669 (17,5)
89222-06-08	3/8	1/2	.354 (9)	1.062 (27)	1.141 (29)	.551 (14)	.827 (21)	.669 (17,5)
89222-08-04	1/2	1/4	.275 (7)	1.240 (31,5)	1.240 (31,5)	.630 (16)	.630 (16)	.846 (21,5)
89222-08-06	1/2	3/8	.295 (7,5)	1.240 (31,5)	1.240 (31,5)	.630 (16)	.787 (20)	.846 (21,5)
89222-08-08	1/2	1/2	.354 (9)	1.240 (31,5)	1.279 (32,5)	.630 (16)	.827 (21)	.846 (21,5)

89030

STRAIGHT FEMALE

NPTF

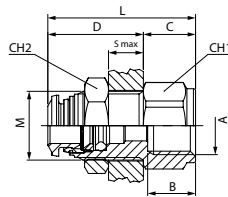


Part No.	Tube	A	B	L	CH
89030-02-02	1/8	1/8	.374 (9,5)	.945 (24)	.512 (13)
89030-02-04	1/8	1/4	.531 (13,5)	1.142 (29)	.630 (16)
89030-53-02	5/32 (4)	1/8	.374 (9,5)	.965 (24,5)	.512 (13)
89030-53-04	5/32 (4)	1/4	.531 (13,5)	1.161 (29,5)	.630 (16)
89030-04-02	1/4	1/8	.374 (9,5)	1.024 (26)	.512 (13)
89030-04-04	1/4	1/4	.531 (13,5)	1.220 (31)	.630 (16)
89030-06-04	3/8	1/4	.531 (13,5)	1.358 (34,5)	.709 (18)
89030-06-06	3/8	3/8	.531 (13,5)	1.358 (34,5)	.787 (20)

89055

FEMALE BULKHEAD CONNECTOR

NPTF

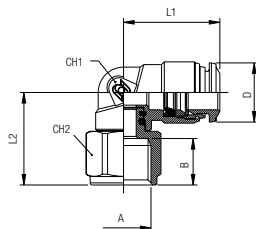


Part No.	Tube	A	B	M	S max	CH1	CH2	C	D	L
89055-53-02	5/32 (4)	1/8	.374 (9,5)	M12X1	.275 (7)	.591 (15)	.669 (17)	.394 (10)	.748 (19)	1.141 (29)
89055-53-04	5/32 (4)	1/4	.531 (13,5)	M12X1	.275 (7)	.630 (16)	.669 (17)	.591 (15)	.748 (19)	1.339 (34)
89055-04-02	1/4	1/8	.374 (9,5)	M14X1	.315 (8)	.630 (16)	.669 (17)	.394 (10)	.826 (21)	1.221 (31)
89055-04-04	1/4	1/4	.531 (13,5)	M14X1	.315 (8)	.630 (16)	.669 (17)	.591 (15)	.826 (21)	1.417 (36)
89055-04-06	1/4	3/8	.531 (13,5)	M14X1	.315 (8)	.787 (20)	.669 (17)	.591 (15)	.826 (21)	1.417 (36)
89055-05-02	5/16 (8)	1/8	.374 (9,5)	M16X1	.315 (8)	.709 (18)	.748 (19)	.394 (10)	.866 (22)	1.260 (32)
89055-05-04	5/16 (8)	1/4	.531 (13,5)	M16X1	.315 (8)	.709 (18)	.748 (19)	.472 (12)	.866 (22)	1.339 (34)
89055-05-06	5/16 (8)	3/8	.531 (13,5)	M16X1	.315 (8)	.787 (20)	.748 (19)	.591 (15)	.866 (22)	1.457 (37)
89055-06-06	3/8	3/8	.531 (13,5)	M20X1	.374 (9,5)	.945 (24)	.945 (24)	.551 (14)	1.003 (25,5)	1.557 (39,5)
89055-08-06	1/2	3/8	.531 (13,5)	M22X1	.413 (10,5)	.945 (24)	1.024 (26)	.591 (15)	1.083 (27,5)	1.673 (42,5)
89055-08-08	1/2	1/2	.690 (17,5)	M22X1	.413 (10,5)	.945 (24)	1.024 (26)	.787 (20)	1.083 (27,5)	1.870 (47,5)

89105

FEMALE ELBOW

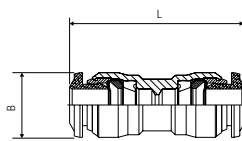
NPTF



Part No.	Tube	A	B	L1	L2	CH1	CH2	D
89105-53-02	5/32 (4)	1/8	.374 (9,5)	.688 (17,5)	.688 (17,5)	.354 (9)	.511 (13)	.394 (10)
89105-53-04	5/32 (4)	1/4	.531 (13,5)	.688 (17,5)	.787 (20)	.354 (9)	.629 (16)	.394 (10)
89105-04-02	1/4	1/8	.374 (9,5)	.846 (21,5)	.748 (19)	.433 (11)	.511 (13)	.492 (12,5)
89105-04-04	1/4	1/4	.531 (13,5)	.846 (21,5)	.846 (21,5)	.433 (11)	.629 (16)	.492 (12,5)
89105-06-02	3/8	1/8	.374 (9,5)	1.062 (27)	.905 (23)	.511 (13)	.511 (13)	.689 (17,5)
89105-06-04	3/8	1/4	.531 (13,5)	1.062 (27)	.944 (24)	.629 (16)	.629 (16)	.689 (17,5)

89040

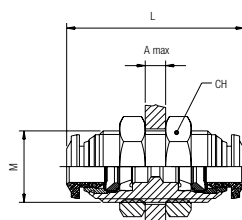
UNION



Part No.	Tube	Tube	L	B
89040-02	1/8		.334 (8,5)	1.023 (26)
89040-53	5/32 (4)		.413 (10,5)	1.200 (30,5)
89040-04-53	1/4	5/32 (4)	.492 (12,5)	1.299 (33)
89040-04	1/4		.492 (12,5)	1.339 (34)
89040-05	5/16 (8)		.571 (14,5)	1.417 (36)
89040-04-06	3/8	1/4	.688 (17,5)	1.614 (41)
89040-06-08	3/8	1/2	.807 (20,5)	1.850 (47)
89040-06	3/8		.688 (17,5)	1.614 (41)
89040-08	1/2		.807 (20,5)	1.850 (47)

89050

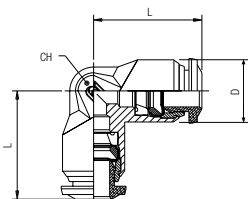
BULKHEAD UNION



Part No.	Tube	M	L	CH	A max
89050-02	1/8	M10x1	1.023 (26)	.551 (14)	.197 (5)
89050-53	5/32 (4)	M12x1	1.240 (31,5)	.669 (17)	.276 (7)
89050-04	1/4	M14x1	1.378 (35)	.669 (17)	.374 (9,5)
89050-05	5/16 (8)	M16x1	1.457 (37)	.748 (19)	.413 (10,5)
89050-06	3/8	M20x1	1.693 (42)	.945 (24)	.492 (12,5)
89050-08	1/2	M22x1	1.890 (48)	1.024 (26)	.650 (16,5)

89130

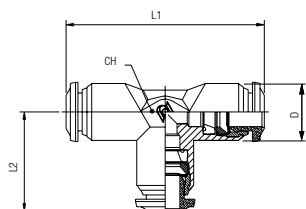
ELBOW UNION



Part No.	Tube	L	CH	D
89130-02	1/8	.649 (16,5)	.354 (9)	.394 (10)
89130-53	5/32 (4)	.669 (17)	.354 (9)	.394 (10)
89130-04	1/4	.826 (21)	.433 (11)	.492 (12,5)
89130-05	5/16 (8)	.886 (22,5)	.512 (13)	.551 (14)
89130-06	3/8	1.024 (26)	.630 (16)	.689 (17,5)
89130-08	1/2	1.200 (30,5)	.748 (19)	.846 (21,5)

89230

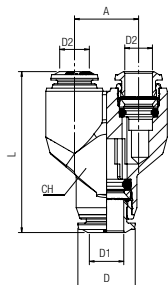
UNION TEE



Part No.	Tube	L1	L2	CH	D
89230-02	1/8	1.229 (33)	.669 (17)	.354 (9)	.394 (10)
89230-53	5/32 (4)	1.339 (34)	.669 (17)	.354 (9)	.394 (10)
89230-04	1/4	1.654 (42)	.827 (21)	.433 (11)	.492 (12,5)
89230-05	5/16 (8)	1.772 (45)	.866 (22,5)	.512 (13)	.551 (14)
89230-06	3/8	2.087 (53)	1.043 (26,5)	.630 (16)	.689 (17,5)
89230-08	1/2	2.402 (61)	1.201 (30,5)	.748 (19)	.846 (21,5)

89310

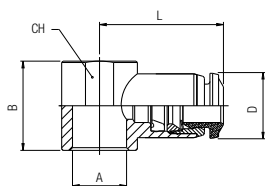
UNION Y



Part No.	Tube	A	L	CH	D
89310-02	1/8	.394 (10)	1.142 (29)	.433 (11)	.394 (10)
89310-53	5/32 (4)	.433 (11)	1.260 (32)	.433 (11)	.394 (10)
89310-04	1/4	.531 (13,5)	1.437 (36,5)	.511 (13)	.492 (12,5)
89310-05	5/16 (8)	.610 (15,5)	1.514 (41)	.511 (13)	.551 (14)
89310-06	3/8	.728 (18,5)	1.890 (48)	.708 (18)	.689 (17,5)

89500

SINGLE BANJO BODY

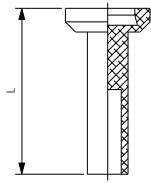


Part No.	Tube	A	B	L	CH	D
89500-02-02	1/8	1/8	.591 (15)	.748 (19)	.551 (14)	.394 (10)
89500-53-32	5/32 (4)	10/32	.492 (12,5)	.748 (19)	-	.394 (10)
89500-53-02	5/32 (4)	1/8	.591 (15)	.827 (21)	.551 (14)	.394 (10)
89500-04-02	1/4	1/8	.591 (15)	.886 (22,5)	.551 (14)	.492 (12,5)
89500-04-04	1/4	1/4	.669 (17)	.984 (25)	.709 (18)	.492 (12,5)
89500-05-02	5/16 (8)	1/8	.591 (15)	.945 (24)	.551 (14)	.551 (14)
89500-05-04	5/16 (8)	1/4	.669 (17)	1.024 (26)	.709 (18)	.551 (14)
89500-05-06	5/16 (8)	3/8	.787 (20)	1.102 (28)	.827 (21)	.551 (14)
89500-06-04	3/8	1/4	.669 (17)	1.142 (29)	.709 (18)	.689 (17,5)
89500-06-06	3/8	3/8	.787 (20)	1.201 (30,5)	.827 (21)	.689 (17,5)
89500-08-06	1/2	3/8	.787 (20)	1.260 (32)	.827 (21)	.846 (21,5)
89500-08-08	1/2	1/2	.945 (24)	1.378 (35)	.984 (25)	.846 (21,5)

For BANJO STEM assemblies see 10.7/10.8/10.9

88610B

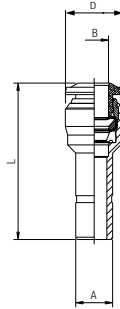
NYLON PLUG



Part No.	Tube	L
88610B-02	1/8	.708 (18)
88610B-53	5/32 (4)	.925 (23,5)
88610B-04	1/4	.964 (24,5)
88610B-05	5/16 (8)	1.023 (26)
88610B-06	3/8	1.122 (28,5)
88610B-08	1/2	1.122 (28,5)

89700

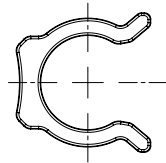
TUBE REDUCER



Part No.	A	B	L	D
89700-04-02	1/4	1/8	1.181 (30)	.394 (10)
89700-04-53	1/4	5/32 (4)	1.181 (30)	.394 (10)
89700-05-53	5/16 (8)	5/32 (4)	1.299 (33)	.394 (10)
89700-06-04	3/8	1/4	1.397 (35,5)	.492 (12,5)
89700-06-05	3/8	5/16 (8)	1.397 (35,5)	.551 (14)
89700-08-04	1/2	1/4	1.693 (43)	.492 (12,5)
89700-08-06	1/2	3/8	1.693 (43)	.689 (17,5)

50980

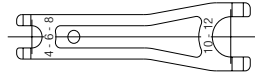
SECURITY CLIP



Part No.	Tube
50980-53	5/32 (4)
50980-04	1/4 (6)
50980-05	5/16 (8)
50980-06	3/8 (10)
50980-08	1/2 (12)

50991

TOOL FOR DISASSEMBLING



Part No.
50991

50006

THREAD PACKING FOR SWIFTFIT TAPER THREADS



Part No.	Thread
50006-02	1/8
50006-04	1/4
50006-06	3/8
50006-08	1/2

